



LISTING INFORMATION OF  
**Knauf Gypsum Boards**  
SPEC ID: 29665

Knauf LLC  
P.O. Box 112871  
Knauf Head Office, Unit B9 and B10 LIU Phase 6, Silicon Oasis  
Dubai  
United Arab Emirates

This report is for the exclusive use of Intertek's Client and is provided pursuant to the agreement between Intertek and its Client. Intertek's responsibility and liability are limited to the terms and conditions of the agreement. Intertek assumes no liability to any party, other than to the Client in accordance with the agreement, for any loss, expense or damage occasioned by the use of this report. Only the Client is authorized to permit copying or distribution of this report and then only in its entirety. Any use of the Intertek name or one of its marks for the sale or advertisement of the tested material, product or service must first be approved in writing by Intertek. The observations and test results in this report are relevant only to the sample tested. This report by itself does not imply that the material, product, or service is or has ever been under an Intertek certification program.

## LISTING INFORMATION

Knauf Gypsum Boards comply fully with the requirements of ASTM1396/1396M. Knauf has the following boards under certification with Intertek in various sizes. Product description from :

**Knauf Gypsum Board (GW-R)** - Knauf GW-R Gypsum Boards are gypsum based wallboards whose front and back surfaces, and long edges, are sandwiched in a board liner. Knauf GW-R boards are used for cladding walls and ceilings that are constructed on metal grids and wooden frames: for furring, partitions and ceilings, prefab building units and for dry lining using dot and dab of a gypsum based bonder.

**Knauf Moisture Resistant Gypsum Board (GB-WR)** - Knauf GB-WR Moisture Resistant Gypsum Boards are gypsum boards whose gypsum core is additionally hydrophobized against absorption of moisture. Their application is similar to the Knauf GW-R Boards. However MR boards are primarily used for bathrooms and kitchens in private housing and offices.

**Knauf Type X Fire Resistant Gypsum Board (GW-TX)** - Knauf GW-TX Type X Fire Resistant Gypsum Boards are gypsum based wallboards whose core is reinforced with fiber glass for purpose of fire resistance. Knauf GW-TX boards are preferred in shaft wall installations, furrings, partitions, suspended ceilings and prefab units where fire protection requirements are needed.

**Knauf Type X Fire Resistant IMPACT Gypsum Board (GW-TX IMPACT)** - Knauf GW-TX Type X IMPACT Fire Resistant Gypsum Boards are gypsum based wallboards whose core is reinforced with fiber glass for purpose of fire resistance. Knauf GW-TX IMPACT boards are preferred in shaft wall installations, furrings, partitions, suspended ceilings and prefab units where fire protection requirements are needed.

**Knauf Type X Fire and Moisture Resistant Gypsum Board (GB-WRTX)** – Knauf GB-WRTX Type X Fire & Moisture Resistant Gypsum Boards are fire resistant boards with a reinforced fiber glass core whose that is additionally hydrophobized against absorption of moisture. Their application areas are similar to the Knauf FR Boards. However FM boards are primarily used for bathrooms and kitchens in private housing and offices. Knauf GB-WRTX Type X boards can be used as a substitute for GW-TX boards when specified in designs.

**Knauf GB-WR Mold Type X Gypsum Board (GB-WR MOLD)** – Knauf Moisture and Mold resistant Gypsum board feature unique technology that combines moisture and mold resistance and is specially engineered to provide enhanced protection against mold growth. This board is Type X approved for enhanced Fire resistance. Knauf GB-WR Mold boards can be used as a substitute for GW-TX boards when specified in designs.

**Knauf Type X Fire Resistant Gypsum Coreboard (DH-H1)** – Knauf Coreboards are 1" (25.4mm) thick type X Special Fire Resistant gypsum wallboards developed specifically to be used in conjunction with Knauf Shaftwall Systems where access from one side is restricted, given a high fire performance while being simple to construct.

### RATINGS

Board	Standard	Rating
<b>Knauf Fire Resistant Gypsum Board (GW-TX) or Knauf Fire Resistant IMPACT Gypsum Board (GW-TX) 1/2-in (12.7mm) 5/8-in (15.9mm)</b>	<b>ASTM C1396/1396M</b>	<b>Compliant</b>
	<b>ASTM E1966</b>	<b>2HR – Design Listing KL/GBF 120-01</b>
		<b>1HR – Design Listing KL/GBF 60-01</b>
		<b>2HR – Design Listing KL/GBF 120-03</b>
	<b>ASTM E119</b>	<b>2HR – Design Listing KL/GBF 120-02</b>
		<b>2HR – Design Listing KL/GBF 120-05</b>

		2HR – Design Listing KL/GBF 120-06
		2HR – Design Listing KL/GBF 120-08
		3HR – Design Listing KL/GBF 180-01
		3HR – Design Listing KL/GBF 180-02
		1HR – Design Listing KL/GBF 60-02
		1HR – Design Listing KL/GBF 60-03
		1HR – Design Listing KL/GBF 60-04
		1HR – Design Listing KL/GBF 60-06
Knauf Fire and Moisture Resistant Gypsum Board (GB-WRTX) 1/2-in (12.7mm) 5/8-in (15.9mm)	ASTM C1396/1396M	Compliant
Knauf Moisture Resistant Gypsum Board (GB-WR) 1/2-in (12.7mm) 5/8-in (15.9mm)	ASTM C1396/1396M	Compliant
Knauf Regular Gypsum Board (GW-R) 1/2-in (12.7mm) 5/8-in (15.9mm)	ASTM C1396/1396M	Compliant
Knauf Regular Gypsum Board (GW-R) 1/2-in (12.7mm) 5/8-in (15.9mm)	ASTM C1396/1396M	Compliant
Knauf Regular Gypsum Board (GW-R) 1/2-in (12.7mm) 5/8-in (15.9mm)	ASTM C1396/1396M	Compliant
Knauf GB-WR Mold Type X Gypsum Board (GB-WR MOLD) 1/2-in (12.7mm)5/8-in (15.9mm)	ASTM C1396/1396M	Compliant
	ASTM D3273	Rating - 10
Knauf Type X Fire Resistant Gypsum Coreboard (DH-H1)1-in. (25.4mm)	ASTM C1396/1396M	Compliant
	ASTM E119	2HR – Design Listing KL GBF 120-02

<b>Attribute</b>	<b>Value</b>
Certificate Date of Expiry	December 31, 2024
Certificate Date of Initial Registration	March 18, 2015
Certificate Number	WHI15-22825401
Criteria	ASTM E1966 (2007)
Criteria	ASTM C1396 / C1396M (2009)
Criteria	ASTM E119 (2012)
CSI Code	09 29 00 Gypsum Board
Listing Section	EXPANSION/SEISMIC JOINTS
Listing Section	WALL ASSEMBLIES
Listing Section	OTHER PRODUCTS
Spec ID	29665

## DRAWING INDEX

KL/GBF 120-01

KL/GBF 120-02

KL/GBF 120-03

KL/GBF 120-05

KL/GBF 120-06

KL/GBF 120-08

KL/GBF 180-02

KL/GBF 60-01

KL/GBF 60-02

KL/GBF 60-03

KL/GBF 60-04

# KL/GBF 120-01

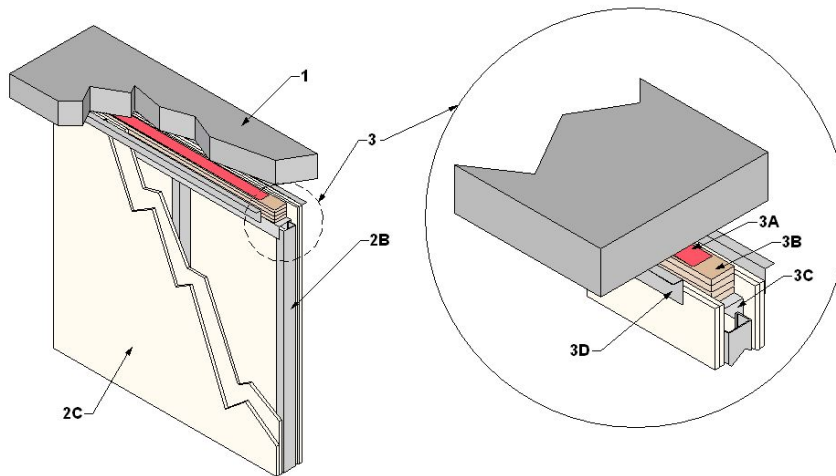
Division 09 Finishes  
 09 29 00 Gypsum Board  
 09 29 82 Gypsum Board Fireproofing

Page 1 of 2

---

**Knauf, LLC**  
**Design Number KL/GBF 120-01**  
**Head of Wall Joint**  
**Knauf Fire Resistant Gypsum Board**  
**ASTM E1966**  
**Fire Resistance Rating: 2 hr**  
**ASTM E1399 Cycling – Class IV**  
**Maximum Joint Opening – 2in. (50mm)**  
**Minimum Joint Opening – 0in. (0mm)**

---



1. FLOOR ASSEMBLY: Normal weight concrete floor assembly with a minimum 2 hr fire resistance.
2. WALL ASSEMBLY: Construct a 2-hour fire-rated gypsum wall assembly consisting of the following elements:
  - A. BOTTOM TRACK: Install a minimum 25 GA, 2-1/2 in. c-shaped Knauf UM runner bottom track using appropriate method of attachment to flooring.
  - B. STUDS: Install minimum 2-1/2 in., 25 GA Knauf CW steel studs spaced 24 in. on center (oc). Secure studs to Bottom Track (Item 2A) using a #8 x 1/2 in. lath screw or other equivalent fastener at every

stud. Stud should be cut to height of the wall size when the Head of Wall Joint (Item 1) is at the minimum desired opening

C. CERTIFIED COMPANY: Knauf, LLC.

CERTIFIED PRODUCT: Type X Gypsum Board

MODEL: Knauf GW-TX

GYPSUM BOARD: Use two layers of 5/8 in. (15.9mm) thick Knauf GW-TX Type X Gypsum Board. Secure base layer of gypsum board to steel studs (Item 1A) using Knauf TN 3.5 x 25mm long self drilling drywall screws spaced 12 in. on center (oc)

Date Created: February 15, 2013  
 Project No: 100993201SAT-003A



Intertek©

**KL/GBF 120-01 (2 OF 2)**

**Division 09 Finishes**  
**09 29 00 Gypsum Board**  
**09 29 82 Gypsum Board Fireproofing**

Page 2 of 2

around the perimeter and in the field. Secure face layer of gypsum board with joints staggered with those of the base layer and secure using #12 x 1-7/8 in. long Type S drywall screws spaced 8 in. oc around the perimeter and in the field. Ensure that screws on both layers are located below the top of the Gypsum Board a distance of the maximum joint width plus 1/2 in. to accommodate the Top Track (Item 3C) when the joint is at the minimum width.

- D. **JOINT TAPE AND COMPOUND** – (Not Shown) Apply a level 2 finish of vinyl or casein, dry or premixed joint compound applied to the following elements: Apply to face layer of gypsum board (Item 2) in two coats to all exposed fastener heads and gypsum board joints. Embed minimum 2 in. wide paper, plastic, or fiberglass tape in first layer of compound over joints in gypsum board (Item 2).
3. **HEAD OF WALL JOINT** – Install head of wall joint using the following items. Joints are approved for minimum opening of 0 in. (0mm) to 2 in. (50 mm).
- A. **SEALANT (optional)**: Install nominal 1in. wide x 1/4 in. thick strip of Selleys Fireblock PSA Composite fire and acoustic sealant between the Joint Gypsum Board (Item 3B) and the Floor Assembly (Item 1)
- B. **CERTIFIED COMPANY**: Knauf, LLC.
- CERTIFIED PRODUCT**: Type X Gypsum Board
- MODEL**: Knauf GW-TX

**JOINT GYPSUM BOARD**: Install 4 layers of 5/8 in. thick or 5 layers of 1/2 in. thick Knauf GW-TX type X gypsum board to Floor Assembly (Item 1) using the Top Track (Item 3C) Joint Gypsum Board shall be cut to the same width as the top track (minimum width is 2-1/2 in.). Do not use tapered edges of the Knauf GW-TX Type X Gypsum Board.

- C. **TOP TRACK**: Install Knauf head of wall joint top track to the Floor Assembly (Item 1) and Joint Gypsum Board (Item 3B). Minimum width of Top track is 2-1/2 in. Depth of Top Track shall be 3/8 in. (9.5mm) deeper than the desired Head of Wall Joint (Ex. A 2 in. (50mm) joint shall have a Top Track minimum depth of 2-3/8 in (60 mm) depth). Attach Top Track to Floor Assembly (Item 1) by installing Rawl Fixings 7.5 mm x 100 mm concrete bolts or other equivalent fasteners spaced 24"
- D. **ANGLE**: Install a 25 GA galvanized steel angle with one leg measuring 1 in. and the other angle measuring 3/8 in. longer than the maximum Head of Wall Joint opening. Install one angle on each side of the joint/wall opening. Attach Angle to the bottom of the Floor Assembly using RawlPlug ceiling wedge anchors or other equivalent fastener spaced 24 in. oc. Angle is positioned so that the vertical leg is flush against the Gypsum Board face layer on each side of the assembly.

Date Created: February 15, 2013  
 Project No: 100993201SAT-003A



Intertek©

# KL/GBF 120-02

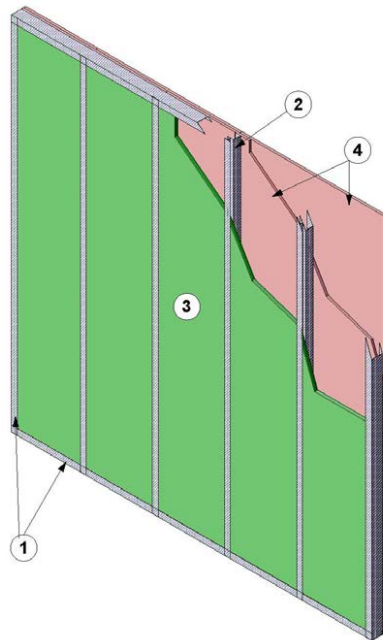
Division 09 Finishes  
09 29 00 Gypsum Board  
09 29 82 Gypsum Board Fireproofing

Page 1 of 2

---

Knauf, LLC  
Design Number KL/GBF 120-02  
Non-Load Bearing Wall Assembly  
Knauf DH-H1 Type X Gypsum Shaftliner  
Knauf Fire Resistant Gypsum Board  
ASTM E119  
Fire Resistance Rating: 2 hr

---



1. STEEL TRACK: Install minimum 2-1/2 in. (65mm) deep, 20 GA (1mm) Knauf "J" Channel galvanized track to the existing floor, ceiling or wall assemblies using appropriate fasteners for the existing construction.  
A. As an optional installation, a head of wall joint may be installed at the top of the wall assembly as an alternative to the top steel track (Item 1). Please refer to Intertek Design Number KL/GBF 120-03 For head of wall joint construction.

2. STEEL STUDS: Friction fit minimum 2-1/2 in. (65mm) deep, 20 GA (1mm) Knauf "CT" Stud, galvanized steel stud into top and bottom steel track (Item 1) spaced maximum 24 in. on center (oc).
3. CERTIFIED COMPANY: Knauf, LLC.

CERTIFIED PRODUCT: Type X Gypsum Board

MODEL: Knauf DH-H1

SHAFTLINER GYPSUM BOARD:  
Friction fit one layer of 1 in. (25.4mm)

Date Created: January 22, 2014  
Project No: 101310384SAT-003A



Intertek©



## KL/GBF 120-02 (2 OF 2)

**Division 09 Finishes**  
**09 29 00 Gypsum Board**  
**09 29 82 Gypsum Board Fireproofing**

Page 2 of 2

thick Knauf DH-H1 Type X Gypsum Shaftliner. Cut Knauf DH-H1 Type X Gypsum Shaftliner so that the board is the nominal same width as the oc spacing of the steel studs (Item 2) with a maximum width of 24 in. Friction fit gypsum board into the "T"-shaped section of the steel studs (Item 2) and inside and against the long leg of the steel track (Item 1).

4. CERTIFIED COMPANY: Knauf, LLC.

CERTIFIED PRODUCT: Type X Gypsum Board

MODEL: Knauf GW-TX

GYPSUM BOARD: Install two layers of 5/8 in. (15.8mm) Knauf GW-TX Type X gypsum board to the face of the "C"-shaped section of the steel studs (Item

2) and short leg of the bottom and side steel tracks (Item 1). Install base layer using #6 x 1 in. (24 x 3mm) Type S screws spaced 12 in. (305mm) oc. Install face layer using #6 x 1-1/2 in. (38 x 3.5mm) type S screws spaced 12 in. (305mm) oc.

5. JOINT TAPE AND COMPOUND – (Not Shown) Apply a level 2 finish of vinyl or casein, dry or premixed joint compound applied to the following elements: Apply to face layer of gypsum board (Item 4) in two coats to all exposed fastener heads and gypsum board joints. Embed minimum 2 in. wide paper, plastic, or fiberglass tape in first layer of compound over joints in gypsum board.

Date Created: January 22, 2014  
Project No: 101310384SAT-003A



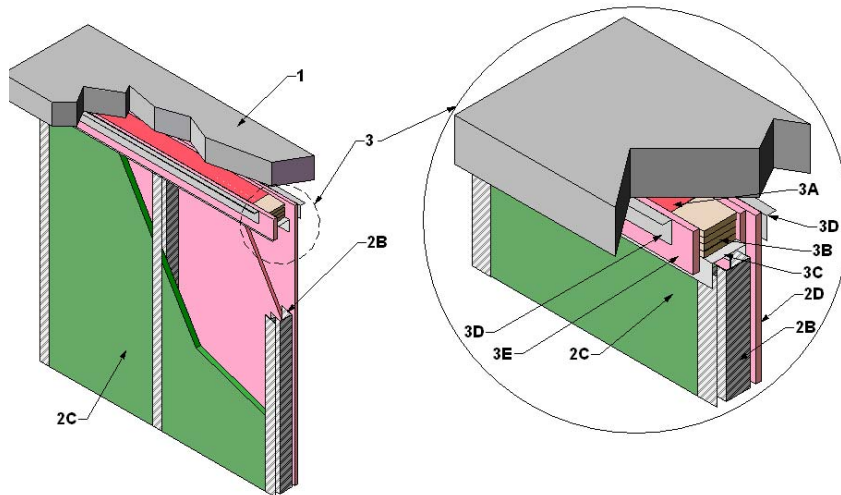
Intertek©

# KL/GBF 120-03

Division 09 Finishes  
 09 29 00 Gypsum Board  
 09 29 82 Gypsum Board Fireproofing

Page 1 of 3

**Knauf, LLC**  
**Design Number KL/GBF 120-03**  
**Head of Wall Joint**  
**Knauf Fire Resistant Gypsum Board**  
**Knauf DH-H1 Type X Gypsum Shaftliner**  
**ASTM E1966**  
**Fire Resistance Rating: 2 hr**  
**ASTM E1399 Cycling – Class IV**  
**Max Joint Opening – 2 in. (50mm)**  
**Min Joint Opening – 0 in. (0mm)**



1. FLOOR ASSEMBLY: Normal weight concrete floor assembly with a min 2 hr fire resistance.
2. WALL ASSEMBLY: Construct a 2-hr fire-rated gypsum wall assembly in accordance with Intertek Design Number KL/GBF 120-02 consisting of the following elements:
  - A. STEEL TRACK (Not Shown): Install min 2-1/2 in. (64mm) deep, 20 GA (1mm) Knauf "J" Channel galvanized track to the existing floor or wall assemblies using appropriate fasteners for the existing construction.
  - B. STEEL STUDS: Friction fit min 2-1/2 in. (65mm) deep, 20 GA (1mm) Knauf "CT"

Stud, galvanized steel stud into top and bottom steel track (Item 1A) Studs shall be cut to the height of the wall when the Head of Wall Joint (Item 3) is at the min desired opening and accounting for the height of the installed joint.

C. CERTIFIED COMPANY: Knauf, LLC.

CERTIFIED PRODUCT: Type X Gypsum Board

MODEL: Knauf DH-H1

SHAFTLINER GYPSUM BOARD: Friction fit one layer of 1 in. (25.4mm) thick Knauf DH-H1 Type X Gypsum Shaftliner. Cut board so that it is the

Date Created: February 28, 2014  
 Project No: 101305960SAT-001A



Intertek©

**KL/GBF 120-03 (2 OF 3)****Division 09 Finishes  
09 29 00 Gypsum Board  
09 29 82 Gypsum Board Fireproofing**

Page 2 of 3

same nominal width as the on center (oc) spacing of the steel studs (Item 2B) with a max width of 24 in. Friction fit gypsum board into the "T"-shaped section of the steel studs (Item 2B) and inside and against the long leg of the steel track (Item 2A).

**D. CERTIFIED COMPANY:** Knauf, LLC.

**CERTIFIED PRODUCT:** Type X Gypsum Board

**MODEL:** Knauf GW-TX

**GYPSUM BOARD:** Install two layers of 5/8 in. (15.9mm) Knauf GW-TX Type X gypsum board to the face of the "C"-shaped section of the steel studs (Item 2B) and short leg of the bottom and side steel tracks (Item 2A). Install base layer using #6 x 1 in. (24mm x 3mm) Type S screws spaced 12 in. (305mm) oc. Install face layer using #6 x 1-1/2 in. (38mm x 3.5mm) type S screws spaced 12 in. (305mm) oc, offset 6 in. (152mm) from those of the base layer.

**E. JOINT TAPE AND COMPOUND – (Not Shown)** Apply a level 2 finish of vinyl or casein, dry or premixed joint compound applied to the following elements: Apply to face layer of gypsum board (Item 4) in two coats to all exposed fastener heads and gypsum board joints. Embed min 2 in. (51mm) wide paper, plastic, or fiberglass tape in first layer of compound over joints in gypsum board.**3. HEAD OF WALL JOINT –** Install head of wall joint using items A through E. Joints are approved for mini opening of 0 in. (0mm) to 2 in. (51 mm).**A. SEALANT (optional):** Install nominal 1 in. (25.4mm) wide x 1/4 in. (6.4mm) thick strip of Selleys Fireblock PSA Composite fire and acoustic sealant or Al Muqarram Industry AMI Fire Stop Acrylic Sealant between the Joint Gypsum Board (Item 3B) and the Floor Assembly (Item 1)**B. CERTIFIED COMPANY:** Knauf, LLC.

Date Created: February 28, 2014  
Project No: 101305960SAT-001A



**CERTIFIED PRODUCT:** Type X Gypsum Board

**MODEL:** Knauf GW-TX

**JOINT GYPSUM BOARD:** Install four (4) layers of 5/8 in. (15.9mm) thick or five (5) layers of 1/2 in. (12.7mm) thick Knauf GW-TX Type X gypsum board to Floor Assembly (Item 1) using the Top Track (Item 3C). Joint Gypsum Board shall be cut to the same width as the top track (min width is 2-1/2 in. (64mm)). Do not use tapered edges of the Knauf GW-TX Type X Gypsum Board.

**C. TOP TRACK:** Install Knauf head of wall joint top track to the Floor Assembly (Item 1) and Joint Gypsum Board (Item 3B). Min width of Top track is 2-1/2 in. (64mm). Depth of Top Track shall be 3/8 in. (9.5mm) deeper than the desired Head of Wall Joint (Ex. A 2 in. (51mm) joint shall have a Top Track min depth of 2-3/8 in (60 mm) depth). Attach Top Track to Floor Assembly (Item 1) by installing Rawl Fixings 7.5 mm x 100 mm concrete bolts or other equivalent fasteners spaced 24 in. (610mm) oc.**D. ANGLE:** Install a 25 GA (0.635mm) galvanized steel angle with one leg measuring 1 in. (25.4mm) and the other angle measuring 3/8 in. (9.5mm) longer than the max Head of Wall Joint opening. Install one angle on each side of the joint/wall opening. Attach Angle to the bottom of the Floor Assembly (Item 1) using RawlPlug ceiling wedge anchors or other equivalent fastener spaced max 24 in. (610mm) oc. Position angle so that the vertical leg is flush against the Gypsum Board (Item 2D) face layer on the finished side of the assembly and nominal 5/8 in. (15.9mm) away from the shaft side of the wall assembly to provide spacing for the Shaft Head of Wall gypsum Board Strip (Item 3E).**E. CERTIFIED COMPANY:** Knauf, LLC.

Intertek©

## KL/GBF 120-03 (3 OF 3)

**Division 09 Finishes**  
**09 29 00 Gypsum Board**  
**09 29 82 Gypsum Board Fireproofing**

**Page 3 of 3**

CERTIFIED PRODUCT: Type X  
Gypsum Board

MODEL: Knauf GW-TX

SHAFT HEAD OF WALL GYPSUM  
BOARD STRIP – Install a min 4 in.  
(100mm) wide strip of 5/8 in. (15.9mm)  
Knauf GW-TX Type X gypsum board

friction fit between the shaft side Angle  
(Item 3D) and the Joint Gypsum Board  
(Item 3B). Attach gypsum board strip to  
angle (Item 3D) using 1 in. (25.4mm)  
long screws spaced 24 in. (610mm) oc.

Date Created: February 28, 2014  
Project No: 101305960SAT-001A



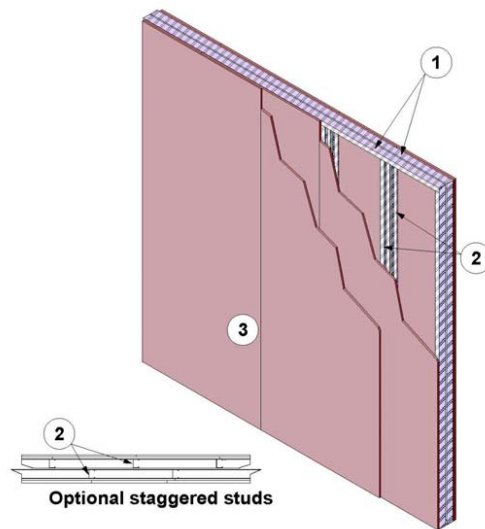
Intertek©

# KL/GBF 120-05

Division 09 Finishes  
 09 29 00 Gypsum Board  
 09 29 82 Gypsum Board Fireproofing

Page 1 of 2

Knauf, LLC  
 Design Number KL/GBF 120-05  
 Non-Load Bearing Wall Assembly  
 Knauf Fire Resistant Gypsum Board  
 ASTM E119  
 Fire Resistance Rating: 2 hr



1. CERTIFIED COMPANY: Knauf, LLC.

CERTIFIED PRODUCT: Steel framing member

MODEL: UW 64/25/0.9/3200

STEEL TRACK: Install two rows of min. 2-1/2 in. (65mm) deep, 20 GA (1mm) Knauf UW shallow galvanized track to the existing floor, ceiling or wall assemblies using appropriate fasteners for the existing construction. Space the two rows of tracks a min. 0.4 in. (10mm) apart.

2. CERTIFIED COMPANY: Knauf, LLC.

CERTIFIED PRODUCT: Steel framing member

Date Created: June 25, 2014  
 Project No: 101509083SAT-007

MODEL: CW 64/33/0.9/3000

STEEL STUDS: Friction fit two rows of min. 2-1/2 in. (64mm) deep, 20 GA (1mm) Knauf CW galvanized steel studs into top and bottom steel tracks (Item 1) spaced max. 24 in. (610mm) on center (oc). Studs cut to be nominal 3mm shorter than the wall height. Studs can be installed inline or offset.

3. CERTIFIED COMPANY: Knauf, LLC.

CERTIFIED PRODUCT: Type X Gypsum Board

MODEL: Knauf GW-TX

GYPSUM BOARD: Install two layers of 1/2 in. (12.7mm) Knauf GW-TX Type X gypsum

Intertek©



## KL/GBF 120-05 (2 OF 2)

**Division 09 Finishes**  
**09 29 00 Gypsum Board**  
**09 29 82 Gypsum Board Fireproofing**

Page 2 of 2

board to the face steel studs (Item 2) to each side of the wall. Install base layers with the long edge vertical and joints offset min. 12 in. (305mm) on opposing sides of the wall. Install gypsum board using Knauf Self-Drilling TN 3.5x25 screws spaced 12 in. (305mm) oc. Install face layers with the long edge vertical and joints offset min. 12 in. (305mm) from face layers. Install gypsum board using Knauf Self-Drilling TN 3.5x45 screws spaced 12 in. (305mm) oc. Attach gypsum board to steel studs only. Gypsum board not attached to steel track (Item 1).

4. CERTIFIED COMPANY: Knauf, LLC.

CERTIFIED PRODUCT: Joint Compound

MODEL: Readygips Multi-Purpose Joint Compound

JOINT TAPE AND COMPOUND – (Not Shown) Apply a level 2 finish of self-adhering Knauf Joint Tape and Knauf Readygips multi-purpose joint compound: Apply tape to face layer of gypsum board (Item 3) at all gypsum board joints. Apply joint compound in two coats to all exposed fastener heads and gypsum board joints.

Date Created: June 25, 2014  
Project No: 101509083SAT-007



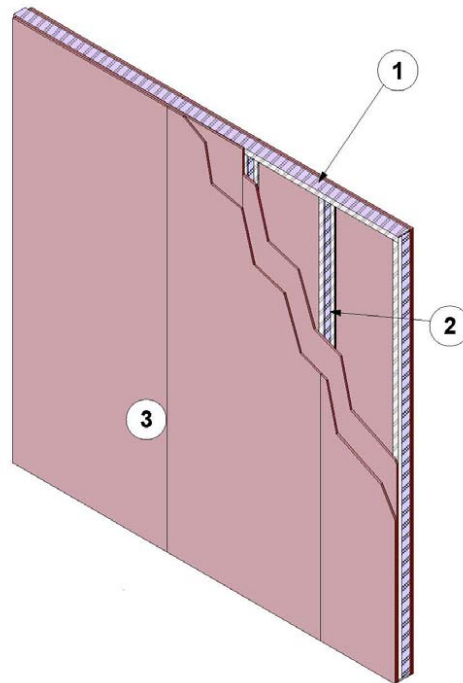
Intertek©

# KL/GBF 120-06

Division 09 Finishes  
09 29 00 Gypsum Board  
09 29 82 Gypsum Board Fireproofing

Page 1 of 2

Knauf, LLC  
Design Number KL/GBF 120-06  
Non-Load Bearing Wall Assembly  
Knauf Fire Resistant Gypsum Board  
ASTM E119  
Fire Resistance Rating: 2 hr



1. CERTIFIED COMPANY: Knauf, LLC.

CERTIFIED PRODUCT: Steel framing member

MODEL: Knauf UW Track

STEEL TRACK: Install min. 3-5/8 in. (92mm) deep, 26 GA (0.455mm) Knauf UW shallow galvanized track to the existing floor, ceiling or wall assemblies using appropriate fasteners for the existing construction.

2. CERTIFIED COMPANY: Knauf, LLC.

CERTIFIED PRODUCT: Steel framing member

MODEL: Knauf CW Studs

STEEL STUDS: Friction min. 3-5/8 in. (92mm) deep, 26 GA (0.455mm) Knauf CW galvanized steel studs into top and bottom steel tracks (Item 1) spaced max. 24 in. (610mm) on center (oc). Studs cut to be

Date Created: September 11, 2014  
Project No: 100966881SAT-00D



Intertek©

## KL/GBF 120-06 (2 OF 2)

**Division 09 Finishes**  
**09 29 00 Gypsum Board**  
**09 29 82 Gypsum Board Fireproofing**

Page 2 of 2

nominal 3/4 in. (19mm) shorter than the wall height.

Knauf Self-Drilling TN 3.9x35 screws spaced 12 in. (305mm) oc.

3. CERTIFIED COMPANY: Knauf, LLC.

4. CERTIFIED COMPANY: Knauf, LLC.

CERTIFIED PRODUCT: Type X Gypsum Board

CERTIFIED PRODUCT: Joint Compound

MODEL: Knauf GW-TX

MODEL: Readygips Multi-Purpose Joint Compound

GYPSUM BOARD: Install two layers of 1/2 in. (12.7mm) Knauf GW-TX Type X gypsum board to the face steel studs (Item 2) to each side of the wall installed with the long edge vertical with joints offset min. 12 in. (305mm) on opposing sides of the wall. Install base layer gypsum board using Knauf Self-Drilling TN 3.9x25 screws spaced 12 in. (305mm) oc. Install face layer gypsum board using

JOINT TAPE AND COMPOUND – (Not Shown) Apply a level 2 finish of self-adhering Knauf Joint tape and Knauf Readygips Multi-Purpose Joint Compound: Apply tape to face layer of gypsum board (Item 3) at all gypsum board joints. Apply joint compound in two coats to all exposed fastener heads and gypsum board joints.

Date Created: September 11, 2014  
Project No: 100966881SAT-00D



Intertek©

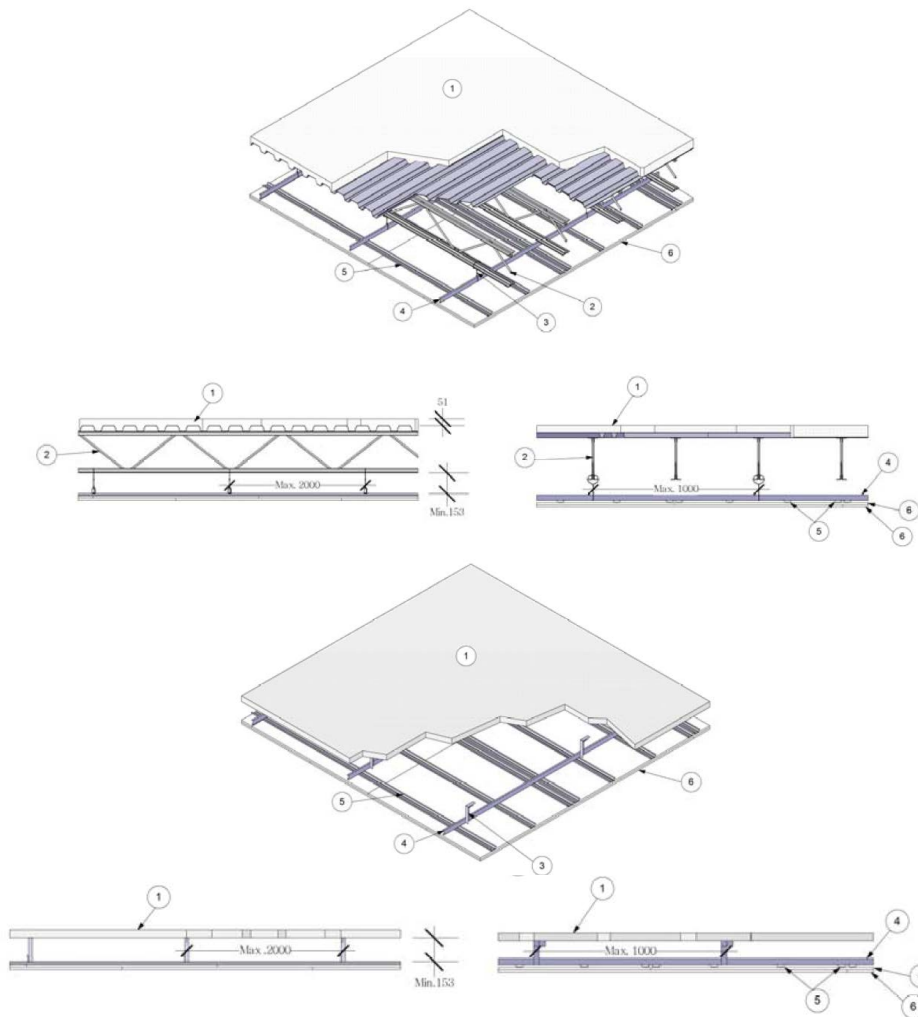


# KL/GBF 120-08

Division 09 Finishes  
09 29 00 Gypsum Board  
09 29 82 Gypsum Board Fireproofing

Page 1 of 2

Knauf LLC  
Design Number KL/GBF 120-08  
Non-Combustible Floor/Ceiling Assembly  
Knauf Type X Fire Rated Gypsum Board (GW-TX)  
ASTM E119 (2014)  
Restrained or Unrestrained Fire Resistance Rating: 2 Hour



Date Issued: February 08, 2016  
Project No. G101310394



**KL/GBF 120-08 (2 OF 2)**

**Division 09 Finishes**  
**09 29 00 Gypsum Board**  
**09 29 82 Gypsum Board Fireproofing**

Page 2 of 2

1. **CONCRETE FLOOR ASSEMBLY:** Use a floor assembly consisting of a concrete floor assembly with a min. continuous thickness of 51mm (2 in.).
2. **NON-COMBUSTIBLE JOIST OR STRUCTURAL SUPPORT:** Use any steel joist, structural steel support, or concrete beam. Bottom of structural supporting elements shall be spaced a min. of 152mm (6 in.) from the bottom of the main channels (Item 4).
3. **HANGERS:** Use one of the following hanger systems. All hangers shall be cut long enough to allow a min. of 152mm (6 in.) from the lowest protected structural member or floor section, as applicable, to the top of the hat furring channel (Item 4). Hangers must be installed with a max. spacing of 1200mm along the length of the main channel (Item 4):
  - A. L-Angle – Install L-angle to concrete floor assembly or to non-combustible joist using the appropriate method as follows.
    - i. Attach L-angle to structural member with min. two Knauf LN 4.2 x 13 wafer-head screws or equivalent, or other appropriately sized screw of greater size when required.
    - ii. Attach two L-angles with a min. of two Knauf LN screws to create a 90 degree angle at the ends of the two L-angles. Attach one leg of the 90 degree angle to the floor assembly or structural member.
  - B. Steel Wire (Optional) – Install min. 12 GA steel wire with a min. of one wrap around the bottom chord of structural member as applicable.
4. **MAIN CHANNEL:** Install min. 1.37mm thick, 38mm wide, and 12.5mm deep main channels spaced max. 1000mm on center (oc). Joints in main channel shall overlap min. 660mm to L-angle or steel wire using the appropriate attachment methods as follows:
  - A. Attach L-angle (Item 3A) using two Knauf LN screws or equivalent. L-angle shall be positioned to be flush with the bottom of the main channel.
  - B. Wrap the steel wire (Item 3B) around the main channel using a min. of one wrap.
5. **CERTIFIED MANUFACTURER:** Knauf LLC  
**CERTIFIED PRODUCT:** Steel Framing Members  
**MODEL:** Hat Furring Channel 67/22/0.5/3000  
**HAT FURRING CHANNEL:** Attach Knauf hat furring channel (0.5mm thick, 57mm wide, 22mm deep) hat-shaped channel perpendicular to main channel (Item 4), spaced max. 406mm oc (16 in.) using two Knauf LN 4.2 x 13 wafer-head screws or equivalent. At locations of butt joints in the gypsum board, install two hat furring channels side by side. Joints in hat furring channel shall overlap a min. of 407mm (16 in.).
6. **CERTIFIED MANUFACTURER:** Knauf LLC  
**CERTIFIED PRODUCT:** Type X Gypsum Board  
**MODEL:** Knauf Type X (GW-TX)  
**GYPSUM BOARD:** Install two layers of 12.7mm (1/2 in.) Knauf GW-TX Type X gypsum board. Attach base layer of gypsum board to the hat furring channel (Item 5) using 22mm (7/8 in.) fine-thread Type S screws spaced 203mm (8 in.) oc. Perimeter screws shall be spaced nominal 1 in. from the gypsum board edges. Attach face layer of gypsum board perpendicular to hat furring channels using 41mm (1-5/8 in.) fine-thread Type S screws spaced 203mm (8 in.) oc. Install face layer with long edge joints offset 610mm from the long edge joints of the base layer. Perimeter screws shall be spaced nominal 1 in. from the gypsum board edges.
7. **CERTIFIED MANUFACTURER:** Knauf LLC  
**CERTIFIED PRODUCT:** Joint Tape and Joint Compound  
**MODEL:** Knauf Type X (GW-TX) Readygips Multi-Purpose Joint Compound  
**JOINT TAPE AND COMPOUND – (Not Shown)** Exposed gypsum board joints are taped and floated using 51mm (2 in.) wide, self-adhering Knauf joint tape. Apply a Level 2 finish of self-adhering Knauf joint tape and Knauf Readygips multi-purpose joint compound. Apply tape to face layer of gypsum board (Item 6) at all gypsum board joints. Apply joint compound in two coats to all exposed fastener heads and gypsum board joints.

Date Issued: February 08, 2016  
 Project No. G101310394

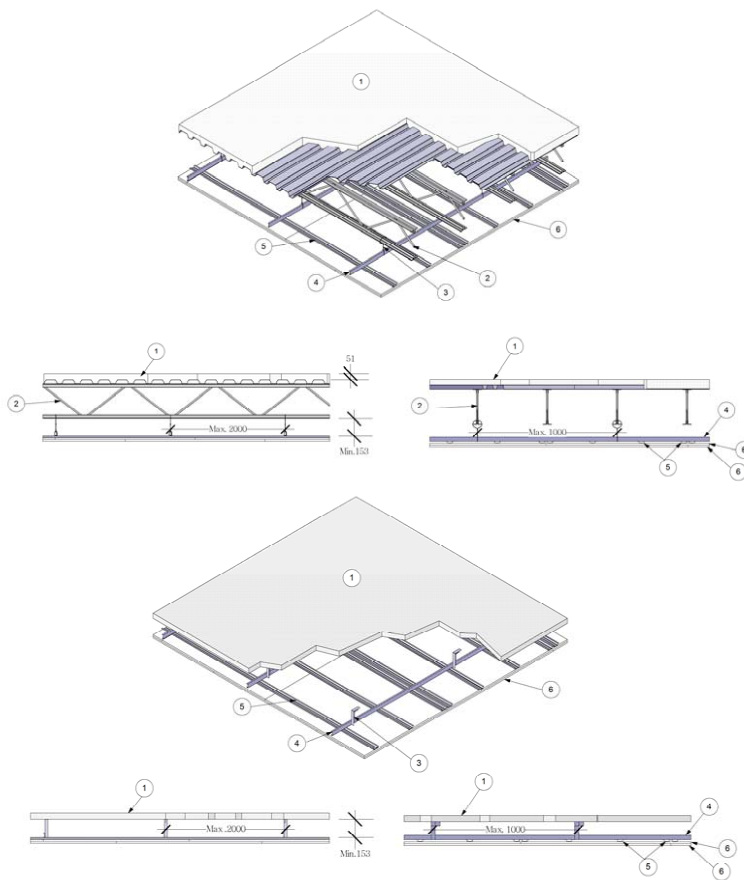


# KL/GBF 180-02

Division 09 Finishes  
09 29 00 Gypsum Board  
09 29 82 Gypsum Board Fireproofing

Page 1 of 3

Knauf, LLC  
Design Number KL/GBF 180-02  
Non-Combustible Floor Ceiling Assembly  
Knauf Fire Resistant Gypsum Board  
ASTM E119  
Restrained or Unrestrained Fire Resistance Rating: 3 hr



Dimensions above are in mm.

1. CONCRETE FLOOR ASSMEBLY: Use a floor assembly consisting of a concrete floor assembly with a min. continuous thickness of 51mm (2 in.)

2. NON-COMBUSTIBLE JOIST OR STRUCTURAL SUPPORT: Use any steel joist, structural steel support or concrete

Date Revised: July 29, 2014  
Project No: 101310394SAT-003B



Intertek©

**KL/GBF 180-02 (2 OF 3)****Division 09 Finishes  
09 29 00 Gypsum Board  
09 29 82 Gypsum Board Fireproofing**

Page 2 of 3

beam. Bottom of structural supporting elements shall be spaced a min. of 153mm (6 in.) from the bottom of the Main Channels (Item 4).

3. HANGERS: Use one of the following hanger systems. All hangers shall be cut long enough to allow a min. of 6 in. from the lowest protected structural member or floor section as applicable to the top of the Hat Furring Channel (Item 4). Hangers must be installed with a max. spacing of 1200 mm along the length of the Main Channel (Item 4):
  - A. L-Angle: Install L-Angle to concrete floor assembly or to non-combustible joist using the appropriate method as follows.
    - i. Attach L-Angle to structural member with min. two Knauf LN 4.2 x 13 wafer head screws or equivalent or other appropriately sized screw of greater size when required.
    - ii. Attach two L-Angles with a min. of two Knauf LN screw to create a 90 degree angle at the ends of the two L-Angles. Attach one leg of the 90 degree angle to the floor assembly or structural member.
  - B. Steel Wire (optional): Install min. 12 GA steel wire with a min. of one wrap around the bottom chord of structural member as applicable.
4. MAIN CHANNEL: Install min. 1.37 mm thick, 38 mm wide and 12.5 mm deep main channels spaced max. 1000 mm on center (oc). Joints in Main Channel shall overlap min. 660 mm to L-Angle or Steel Wire using the appropriate attachment methods as follows:
  - A. Attach L-Angle (Item 3A) using two Knauf LN screws or equivalent. L-Angle shall be positioned to be flush with the bottom of the Main Channel.
  - B. Wrap the steel wire (Item 3B) around the Main Channel using a min. of one wrap.

5. CERTIFIED COMPANY: Knauf, LLC.

Date Revised: July 29, 2014

Project No: 101310394SAT-003B



CERTIFIED PRODUCT: Steel framing members

MODEL: Hat Furring Channel  
67/22/0.5/3000

HAT FURRING CHANNEL: Attach Knauf Hat Furring Channel (0.5 mm thick, 57 mm wide, 22 mm deep) hat shaped channel perpendicular to Main Channel (Item 4) spaced max. 407 mm oc (16 in.) using two Knauf LN 4.2 x 13 wafer head screws or equivalent. At locations of butt joints in the gypsum board, install two Hat Furring Channels side by side. Joints in hat furring channel shall overlap a min. of 407mm (16 in.)

6. CERTIFIED COMPANY: Knauf, LLC.

CERTIFIED PRODUCT: Type X Gypsum Board

MODEL: Knauf GW-TX

GYPSUM BOARD: Install two layers of 15.9 mm (5/8 in.) Knauf GW-TX Type X gypsum board. Attach base layer of gypsum board to the Hat Furring Channel (Item 5) using 25mm (1 in.) fine thread Type S screws spaced 203mm (8 in.) oc. Perimeter screws shall be space nominal 1 in. from the gypsum board edges. Attach face layer of gypsum board perpendicular to Hat Furring channels using 41mm (1-5/8 in.) fine thread Type S screws spaced 203mm (8 in.) oc. Install face layer with long edge joints offset 610 mm from the long edge joints of the base layer. Perimeter screws shall be space nominal 1 in. from the gypsum board edges

7. CERTIFIED COMPANY: Knauf, LLC.

CERTIFIED PRODUCT: Joint Compound

MODEL: Readygips Multi-Purpose Joint Compound

JOINT TAPE AND COMPOUND – (Not Shown) Apply a level 2 finish of self-adhering Knauf Joint Tape and Knauf Readygips multi-purpose joint compound: Apply tape to face layer of gypsum board

Intertek©

## KL/GBF 180-02 (3 OF 3)

**Division 09 Finishes**  
**09 29 00 Gypsum Board**  
**09 29 82 Gypsum Board Fireproofing**

Page 3 of 3

(Item 3) at all gypsum board joints. Apply joint compound in two coats to all exposed fastener heads and gypsum board joints.

Date Revised: July 29, 2014  
Project No: 101310394SAT-003B



Intertek©

# KL/GBF 60-01

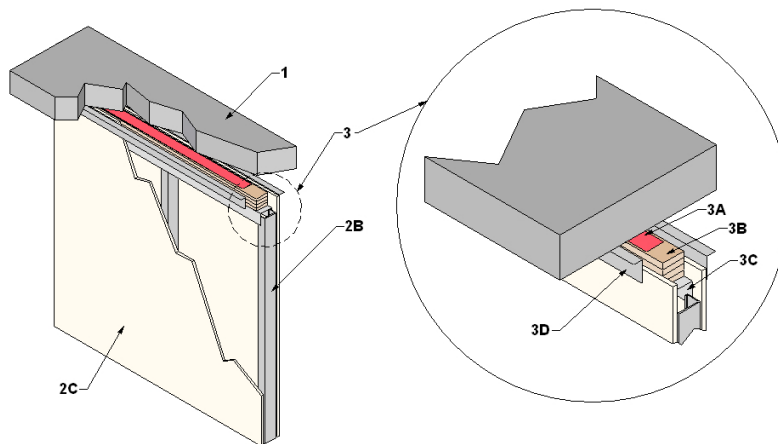
Division 09 Finishes  
 09 29 00 Gypsum Board  
 09 29 82 Gypsum Board Fireproofing

Page 1 of 2

---

**Knauf, LLC**  
**Design Number KL/GBF 60-01**  
**Head of Wall Joint**  
**Knauf Fire Resistant Gypsum Board**  
**ASTM E1966**  
**Fire Resistance Rating: 1 hr**  
**ASTM E1399 Cycling – Class IV**  
**Maximum Joint Opening – 2in. (50mm)**  
**Minimum Joint Opening – 0in. (0mm)**

---



1. FLOOR ASSEMBLY: Normal weight concrete floor assembly with a minimum 1 hr fire resistance.
2. WALL ASSEMBLY: Construct a 1-hour fire-rated gypsum wall assembly consisting of the following elements:
  - A. BOTTOM TRACK: Install a minimum 25 GA, 2-1/2 in. c-shaped Knauf UM runner bottom track using appropriate method of attachment to flooring.
  - B. STUDS: Install minimum 2-1/2 in., 25 GA Knauf CW steel studs spaced 24 in. on center (oc). Secure studs to Bottom Track (Item 2A) using a #8 x 1/2 in. lath screw or other equivalent fastener at every stud. Stud should be cut to height

of the wall size when the Head of Wall Joint (Item 1) is at the minimum desired opening

C. CERTIFIED COMPANY: Knauf, LLC.

CERTIFIED PRODUCT: Type X Gypsum Board

MODEL: Knauf GW-TX

GYPSUM BOARD: Use one layer of 5/8 in. (15.9mm) thick Knauf GW-TX Type X Gypsum Board. Secure gypsum board to steel studs (Item 1A) using Knauf TN 3.5 x 25mm long self drilling drywall screws spaced 12 in. on center (oc) around the perimeter and in the field. Ensure that screws are located

Date Created: February 15, 2013  
 Project No: 100993201SAT-003B



Intertek©

**KL/GBF 60-01 (2 OF 2)**

**Division 09 Finishes**  
**09 29 00 Gypsum Board**  
**09 29 82 Gypsum Board Fireproofing**

Page 2 of 2

below the top of the Gypsum Board a distance of the maximum joint width plus 1/2 in. to accommodate the Top Track (Item 3C) when the joint is at the minimum width.

- D. **JOINT TAPE AND COMPOUND** – (Not Shown) Apply a level 2 finish of vinyl or casein, dry or premixed joint compound applied to the following elements: Apply to face layer of gypsum board (Item 2) in two coats to all exposed fastener heads and gypsum board joints. Embed minimum 2 in. wide paper, plastic, or fiberglass tape in first layer of compound over joints in gypsum board (Item 2).
3. **HEAD OF WALL JOINT** – Install head of wall joint using the following items. Joints are approved for minimum opening of 0 in. (0mm) to 2 in. (50 mm).
- A. **SEALANT (optional):** Install nominal 1in. wide x 1/4 in. thick strip of Selleys Fireblock PSA Composite fire and acoustic sealant between the Joint Gypsum Board (Item 3B) and the Floor Assembly (Item 1)
- B. **CERTIFIED COMPANY:** Knauf, LLC.
- CERTIFIED PRODUCT:** Type X Gypsum Board
- MODEL:** Knauf GW-TX
- JOINT GYPSUM BOARD:** Install 4 layers of 5/8 in. thick or 5 layers of 1/2 in. thick Knauf GW-TX type X

gypsum board to Floor Assembly (Item 1) using the Top Track (Item 3C) Joint Gypsum Board shall be cut to the same width as the top track (minimum width is 2-1/2 in.). Do not use tapered edges of the Knauf GW-TX Type X Gypsum Board.

- C. **TOP TRACK:** Install Knauf head of wall joint top track to the Floor Assembly (Item 1) and Joint Gypsum Board (Item 3B). Minimum width of Top track is 2-1/2 in. Depth of Top Track shall be 3/8 in. (9.5mm) deeper than the desired Head of Wall Joint (Ex. A 2 in. (50mm) joint shall have a Top Track minimum depth of 2-3/8 in (60 mm) depth). Attach Top Track to Floor Assembly (Item 1) by installing Rawl Fixings 7.5 mm x 100 mm concrete bolts or other equivalent fasteners spaced 24"
- D. **ANGLE:** Install a 25 GA galvanized steel angle with one leg measuring 1 in. and the other angle measuring 3/8 in. longer than the maximum Head of Wall Joint opening. Install one angle on each side of the joint/wall opening. Attach Angle to the bottom of the Floor Assembly using RawlPlug ceiling wedge anchors or other equivalent fastener spaced 24 in. oc. Angle is positioned so that the vertical leg is flush against the Gypsum Board face layer on each side of the assembly.

Date Created: February 15, 2013  
 Project No: 100993201SAT-003B



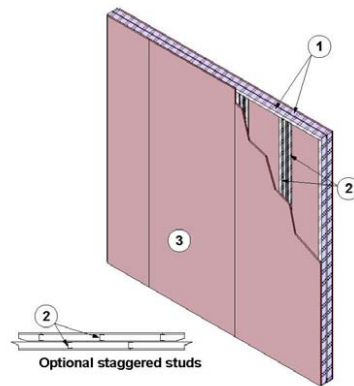
Intertek©

# KL/GBF 60-02

Division 09 Finishes  
 09 29 00 Gypsum Board  
 09 29 82 Gypsum Board Fireproofing

Page 1 of 2

**Knauf, LLC**  
**Design Number KL/GBF 60-02**  
**Non-Load Bearing Wall Assembly**  
**Knauf Fire Resistant Gypsum Board**  
**ASTM E119**  
**Fire Resistance Rating: 1 hr**



1. CERTIFIED COMPANY: Knauf, LLC.

CERTIFIED PRODUCT: Steel framing member

MODEL: UW 64/25/0.9/3200

STEEL TRACK: Install two rows of min. 2-1/2 in. (65mm) deep, 20 GA (1mm) Knauf UW shallow galvanized track to the existing floor, ceiling or wall assemblies using appropriate fasteners for the existing construction. Space the two rows of tracks a min. 0.4 in. (10mm) apart.

2. CERTIFIED COMPANY: Knauf, LLC.

CERTIFIED PRODUCT: Steel framing member

MODEL: CW 64/33/0.9/3000

STEEL STUDS: Friction fit two rows of min. 2-1/2 in. (64mm) deep, 20 GA (1mm) Knauf CW galvanized steel studs into top and bottom steel tracks (Item 1) spaced max. 24

in. (610mm) on center (oc). Studs cut to be nominal 3mm shorter than the wall height. Studs can be installed inline or offset.

3. CERTIFIED COMPANY: Knauf, LLC.

CERTIFIED PRODUCT: Type X Gypsum Board

MODEL: Knauf GW-TX

GYPSUM BOARD: Install one layer of 5/8 in. (15.9mm) Knauf GW-TX Type X gypsum board to the face steel studs (Item 2) to each side of the wall installed with the long edge vertical with joints offset min. 12 in. (305mm) on opposing sides of the wall. Install gypsum board using Knauf Self-Drilling TN 3.5x25 screws spaced 12 in. (305mm) oc. Attach gypsum board to steel studs only. Gypsum board not attached to steel track (Item 1).

4. CERTIFIED COMPANY: Knauf, LLC.

Date Revised: July 10, 2014  
 Project No: 101509083SAT-003A



Intertek©



## KL/GBF 60-02 (2 OF 2)

**Division 09 Finishes**  
**09 29 00 Gypsum Board**  
**09 29 82 Gypsum Board Fireproofing**

**Page 2 of 2**

CERTIFIED PRODUCT: Joint Compound

MODEL: Readygips Multi-Purpose Joint Compound

JOINT TAPE AND COMPOUND – (Not Shown) Apply a level 2 finish of self-adhering Knauf Joint tape and Knauf

Readygips multi-purpose joint compound: Apply tape to face layer of gypsum board (Item 3) at all gypsum board joints. Apply joint compound in two coats to all exposed fastener heads and gypsum board joints.

Date Revised: July 10, 2014  
Project No: 101509083SAT-003A



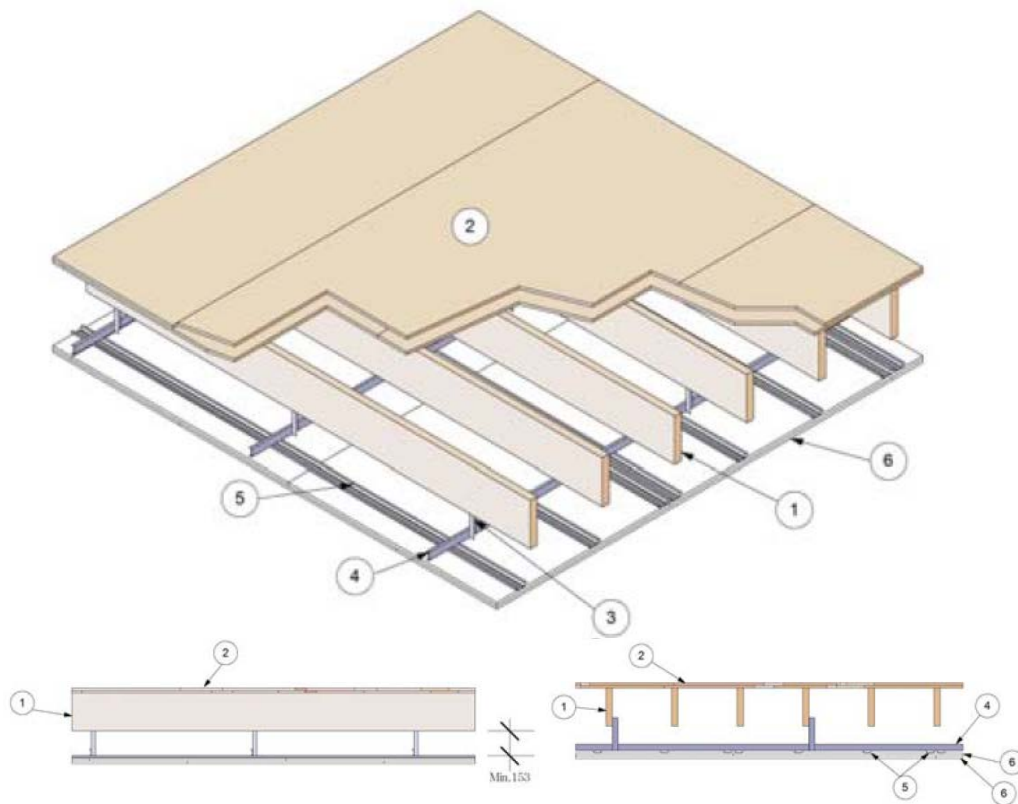
Intertek©

# KL/GBF 60-03

Division 09 Finishes  
 09 29 00 Gypsum Board  
 09 29 82 Gypsum Board Fireproofing

Page 1 of 2

Knauf LLC  
 Design Number KL/GBF 60-03  
 Combustible Floor/Ceiling Assembly  
 Knauf Type X Fire Rated Gypsum Board (GW-TX)  
 ASTM E119 (2014)  
 Fire Resistance Rating: 1 Hour\*



1. **JOIST:** Use min. 38 x 235 (2x10) lumber spaced max. 406mm (16 in.) on center (oc).
2. **FLOOR:** Use a floor assembly consisting of a subfloor, consisting of min. 12mm (15/32 in.) thick wood structural panel perpendicular to joist and finish floor, consisting of min. 15mm (19/32 in.) plywood perpendicular to joists with joints staggered from the subfloor.
3. **HANGERS:** Use the following hanger systems. All hangers shall be cut long enough to allow a min. of 152mm (6 in.) from the lowest protected joist (Item 1) to the top of the hat furring channel (Item 4). Hangers must be installed with a max. spacing of 1200mm along the length of the main channel (Item 4):
  - A. L-Angle – Install L-angle to joist using a min. of two Type W wood screws.

Date Revised: February 08, 2016  
 Project No. G101310394



**KL/GBF 60-03 (2 OF 2)**

**Division 09 Finishes**  
**09 29 00 Gypsum Board**  
**09 29 82 Gypsum Board Fireproofing**

Page 2 of 2

**4. CERTIFIED MANUFACTURER:** Knauf LLC

**CERTIFIED PRODUCT:** Steel Framing Members

**MODEL:** Main Channel 38/12/1.37/3000

**MAIN CHANNEL:** Attach min. 1.37mm thick, 38mm wide, and 12.5mm deep main channels spaced max. 2000mm oc to L-angle using two Knauf LN screws. Joints in main channel shall overlap min. 660mm and be connected by a min. of two Knauf LN screws.

**5. CERTIFIED MANUFACTURER:** Knauf LLC

**CERTIFIED PRODUCT:** Steel Framing Members

**MODEL:** Hat Furring Channel 67/22/0.5/3000

**HAT FURRING CHANNEL:** Attach Knauf hat furring channel (0.5mm thick, 57mm wide, 22mm deep) hat-shaped channel perpendicular to main channel (Item 4), spaced max. 407mm oc (16 in.), using two Knauf LN 4.2 x 13 wafer-head screws or equivalent. At locations of butt joints in the gypsum board, install two hat furring channels side by side. Joints in hat furring channel shall overlap a min. of 407mm (16 in.) and be attached to each other with a min. of four Knauf LN screws.

**6. CERTIFIED MANUFACTURER:** Knauf LLC

**CERTIFIED PRODUCT:** Type X Gypsum Board

**MODEL:** Knauf Type X (GW-TX)

**GYPSUM BOARD:** Install two layers of 15.9mm (1/2 in.) Knauf GW-TX Type X gypsum board. Attach base layer of gypsum board to the hat furring channel (Item 5) using 28.5mm (1-1/8 in.) fine-thread Type S screws spaced 203mm (8 in.) oc. Perimeter screws shall be spaced nominal 29mm (1-1/8 in.) from the gypsum board edges. Attach face layer of gypsum board perpendicular to hat furring channels using 47mm (1-7/8 in.) fine-thread Type S screws spaced 203mm (8 in.) oc. Install face layer with long edge joints offset 610mm (24 in.) from the long edge joints of the base layer. Perimeter screws shall be spaced nominal 1 in. from the gypsum board edges.

\*Ceiling assembly provides one hour fire protection to structural members.

**7. CERTIFIED MANUFACTURER:** Knauf LLC

**CERTIFIED PRODUCT:** Joint Tape and Joint Compound

**MODEL:** Knauf Type X (GW-TX) Readygips Multi-Purpose Joint Compound

**JOINT TAPE AND COMPOUND:** (Not Shown) Exposed gypsum board joints are taped and floated using 51mm (2 in.) wide self-adhering Knauf joint tape. Apply a Level 2 finish of self-adhering Knauf joint tape and Knauf Readygips multi-purpose joint compound. Apply tape to face layer of gypsum board (Item 6) at all gypsum board joints. Apply joint compound in two coats to all exposed fastener heads and gypsum board joints.

Date Revised: February 08, 2016  
 Project No. G101310394



Valued Quality. Delivered.

# KL/GBF 60-04

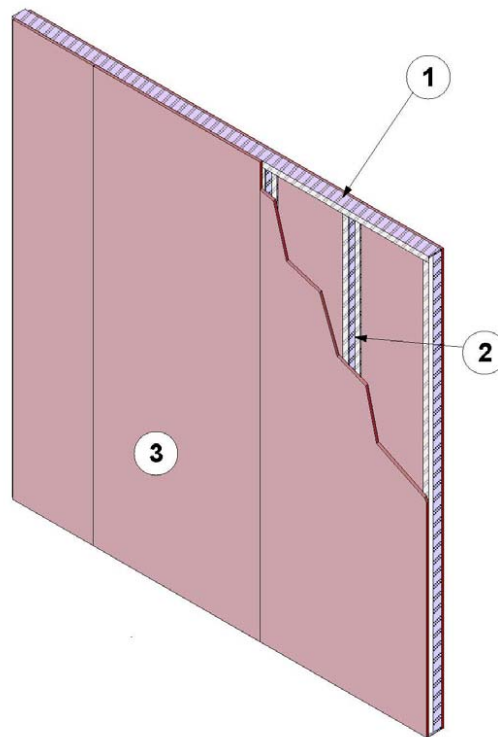
Division 09 Finishes  
09 29 00 Gypsum Board  
09 29 82 Gypsum Board Fireproofing

Page 1 of 2

---

Knauf, LLC  
Design Number KL/GBF 60-04  
Non-Load Bearing Wall Assembly  
Knauf Fire Resistant Gypsum Board  
ASTM E119  
Fire Resistance Rating: 1 hr

---



1. CERTIFIED COMPANY: Knauf, LLC.

CERTIFIED PRODUCT: Steel framing member

MODEL: Knauf UW Track

STEEL TRACK: Install min. 3-5/8 in. (92mm) deep, 26 GA (0.455mm) Knauf UW shallow galvanized track to the existing floor,

ceiling or wall assemblies using appropriate fasteners for the existing construction.

2. CERTIFIED COMPANY: Knauf, LLC.

CERTIFIED PRODUCT: Steel framing member

MODEL: Knauf CW Studs

Date Created: September 11, 2014  
Project No: 100966881SAT-00C



Intertek©

## KL/GBF 60-04 (2 OF 2)

**Division 09 Finishes**  
**09 29 00 Gypsum Board**  
**09 29 82 Gypsum Board Fireproofing**

Page 2 of 2

STEEL STUDS: Friction min. 3-5/8 in. (92mm) deep, 26 GA (0.455mm) Knauf CW galvanized steel studs into top and bottom steel tracks (Item 1) spaced max. 24 in. (610mm) on center (oc). Studs cut to be nominal 3/4 in. (19mm) shorter than the wall height.

3. CERTIFIED COMPANY: Knauf, LLC.

CERTIFIED PRODUCT: Type X Gypsum Board

MODEL: Knauf GW-TX

GYPSUM BOARD: Install one layer of 5/8 in. (15.9mm) Knauf GW-TX Type X gypsum board to the face steel studs (Item 2) to each side of the wall installed with the long edge vertical with joints offset min. 12 in. (305mm) on opposing sides of the wall. Install

gypsum board using Knauf Self-Drilling TN 3.9x25 screws spaced 12 in. (305mm) oc.

4. CERTIFIED COMPANY: Knauf, LLC.

CERTIFIED PRODUCT: Joint Compound

MODEL: Readygips Multi-Purpose Joint Compound

JOINT TAPE AND COMPOUND – (Not Shown) Apply a level 2 finish of self-adhering Knauf Joint tape and Knauf Readygips Multi-Purpose Joint Compound: Apply tape to face layer of gypsum board (Item 3) at all gypsum board joints. Apply joint compound in two coats to all exposed fastener heads and gypsum board joints.

Date Created: September 11, 2014  
Project No: 100966881SAT-00C



Intertek©