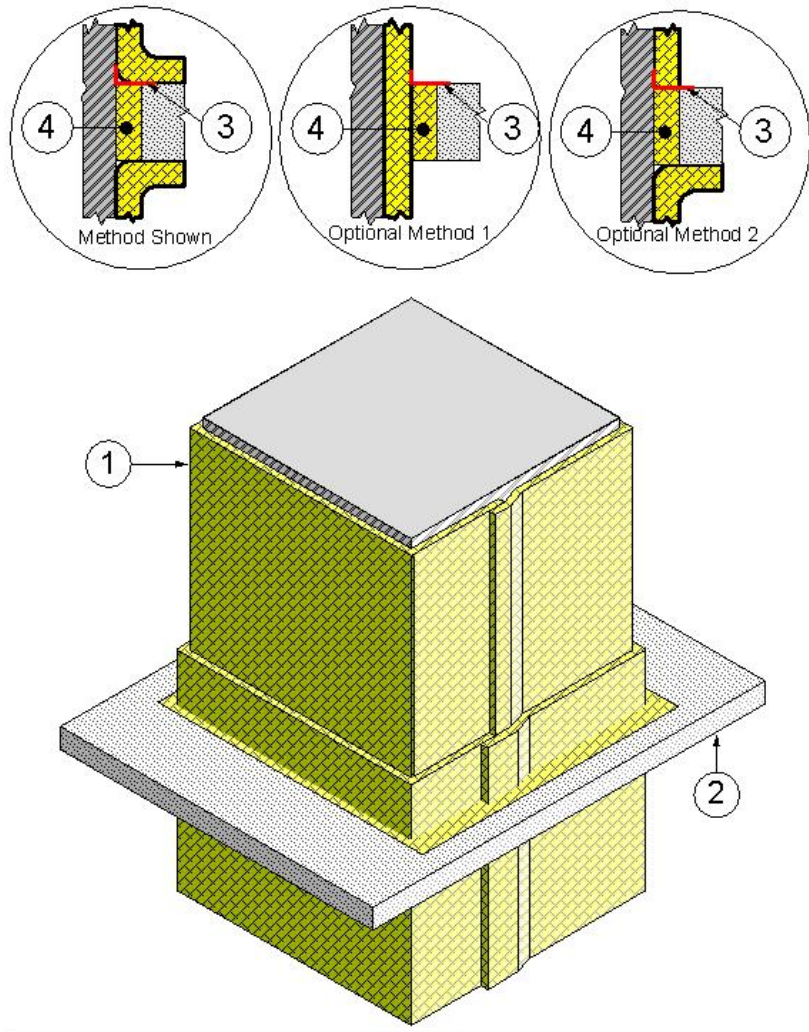

Design No. FS 600 F

FIRE PENETRATION SEAL (Grease Duct)

ASTM E 814

F-Rating – 2 hr

T-Rating – 2 hr



1. PENETRATING ITEM: A continuously welded, liquidtight L-shaped duct system with horizontal and vertical duct sections constructed of minimum 16 GA (0.028 in.) plain sheet steel or 18 GA stainless steel with max. 2704-in. area and max. 52-in. width (max. dim. 52-in. x max. 52-in.) and insulated with 1 layer of 6 pcf, 1-1/2 in. Unifrax Corporation's FyreWrap EZ 1.5 Duct Insulation as detailed in as detailed

in Design GD 600 F. The FyreWrap EZ 1.5 Duct Insulation was terminated and flared out onto the bottom side of the floor/ceiling assembly (Item 2) for a minimum distance of one inch, covering the packing material (Item 4). On the top side the FyreWrap EZ 1.5 Duct Insulation was terminated and flared out onto the floor/ceiling assembly (Item 2) three

Through-Penetration Fire Stop System

inches to cover the fill, void or cavity material (Item 3).

Optional Method 1 – The FyreWrap EZ 1.5 Duct Insulation was run continuously through the floor/ceiling assembly (Item 2).

Optional Method 2 – The FyreWrap EZ 1.5 Duct Insulation was terminated and flared out onto the bottom side of the floor/ceiling assembly (Item 2) for a minimum distance of one inch, covering the packing material (Item 4). On the top side the FyreWrap EZ 1.5 Duct Insulation was terminated straight down to cover all or part of the fill, void or cavity material (Item 3).

2. FLOOR/CEILING ASSEMBLY: The two-hour fire-rated floor/ceiling assembly consists of min. 4-1/2 in. thick normal weight (100 to 150 pcf) reinforced concrete. Create an opening in the floor assembly measuring max. 54 in. long x 56-in. wide. Position the duct assembly concentrically or eccentrically in the opening so that the annular space ranges from min. 1 in. on one side to max. 2 in. on the other. Other opening sizes are allowed provided that the size does not create an annular space greater than 2 in. or smaller than 1 in. between the penetrating item and the face of the opening in the floor/ceiling assembly.
3. FILL, VOID OR CAVITY MATERIAL: Min. 1/4-in. depth of sealant fill material is to be applied to the recess around the top surface of the floor through-penetration opening. The sealant material abutted the concrete and the duct.

Listed Manufacturer:

Specified Technologies Inc. (STI)

Firestopping

Firestopping Sealant

SpecSeal Series SSS
Intumescent Firestop
Sealant

4. PACKING MATERIAL: Fill the annular space with leftover FyreWrap EZ 1.5 Duct Insulation without the foil facing, 6 pcf fibrous blanket. Cut the blanket into 9 in strips. Then fold the blanket into a "U" shape and compress it a minimum of 33% and put in into the annual space. Recess the surface of packing material a min. 1/4 in. from the top surface of the floor, as required to accommodate the necessary depth of caulk fill material.

Listed Manufacturer:

Unifrax Corporation

Applied Fireproofing

Insulation Blanket

FyreWrap EZ 1.5 Duct
Insulation (6 pcf)