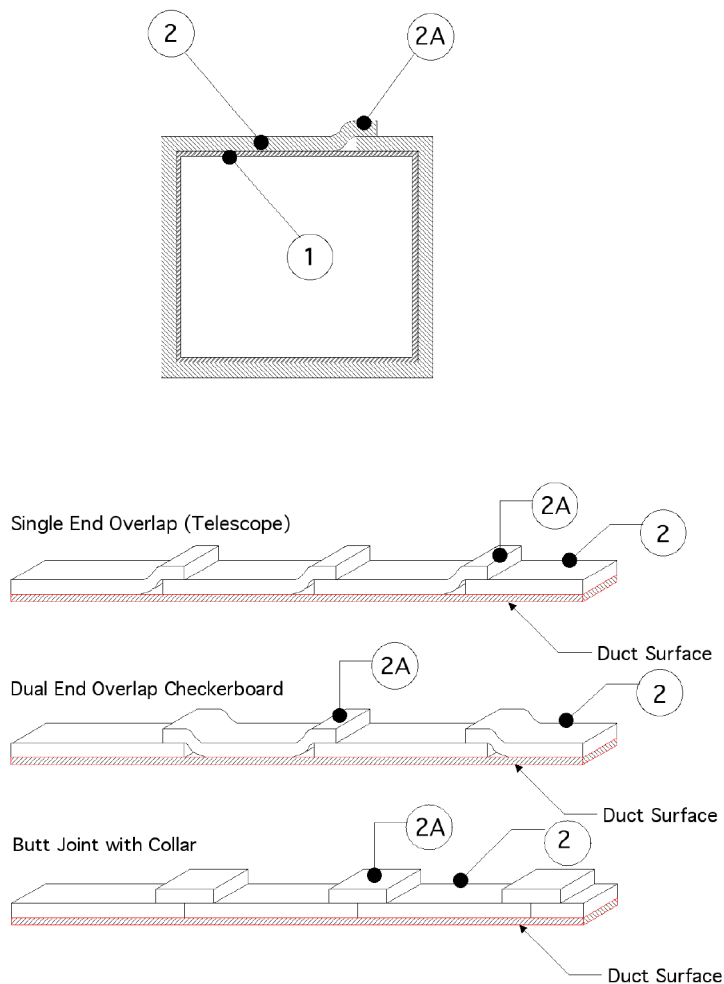


Design No. GD 561 F

GREASE DUCT PROTECTION

ICBO ES AC101 Section 5.5 - Pass

ASTM E 119 Engulfment - 2 hrs.



1. GREASE DUCT: A continuously welded, liquidtight L-shaped duct system with horizontal and vertical shafts constructed of 16 GA sheet steel with outside dimensions of max. 24-in. high x 48-in. wide. When required, equip the duct with a field fabricated access door. Construct the duct using sections affixed to each other with seams. Reinforce the duct to IMC or NFPA 96 requirements designed to carry the weight of the grease duct assembly covered with insulation under a fire

load equivalent to UL 1978 exposure and the ASTM E 119 time-temperature curve. Duct to be rigidly supported in accordance with IMC or NFPA 96 requirements and as specified in Item 6.

2. INSULATION: Use nom. 1-1/2-in. thick, 6-pcf blanket made of soluble amorphous wool fibers or calcium magnesium silica fibers. Use blanket that is fully encapsulated or single faced with foil-scrim-metallized polyester facing. Wrap the steel duct with one layer of

duct wrap (facing exposed) with 3-in. min. overlaps at all joints. Install insulation with zero clearance at the overlaps, with a nom. thickness of 3 in. at the overlap. Make the longitudinal overlaps of adjacent blankets (2A) using one of the following three methods as depicted in the drawings:

- 3-in. overlap telescoping method where each adjacent blanket has one edge exposed and one edge covered by the next blanket,
- 3-in. overlap checkerboard pattern where both edges of each alternating blanket are covered by each adjacent blanket whose edges are exposed, or
- butt splice with collar method where the blankets are butted together and a 6-in. wide collar of blanket is centered over the butt splice overlapping each adjacent blanket 3-in.

For vertical runs, the insulation can be applied to the duct in a continuous length applied parallel with the length of the duct as opposed to wrapping around the duct. All overlaps are to be maintained at a min. 3 in. and are to occur a min. of 6 in. from any corner of the duct. Pins (3) spaced a maximum 8 in. o.c. are to be placed at the centerline of all vertically oriented overlaps.

Seal all joints and exposed fiber with min. 4-in. wide, pressure-sensitive aluminum foil tape. Secure the outer layer with stainless steel banding or pins (3,4). Reference Product Section of this Directory for more details.

Listed Manufacturer:

Unifrax Corporation -

Applied Fireproofing

Insulation Blanket (Soluble Fiber)

FyreWrap EZ® 1.5 Duct Insulation

3. PINS AND BANDING: (Not shown) Weld min. 12 GA, min. 5-in. long, stainless steel insulation pins to the duct. Locate pins at all blanket overlaps and meet the following requirements. No pins are required on the sides. On bottom of duct, space pins in rows max. 10-1/2-in. apart and the pins in the rows are max. 12-in. O.C. Locate pins max. 12 in. from the edges of the duct. All overlaps are a min. 3 in. for overlaps going around the duct and for overlaps following the length of the duct. Locate pins in the middle of the overlap.

Secure blanket to pins with 1-1/2 in. square or round galvanized steel speed clips. Turn down or cut off insulation pins that extend beyond the outer blanket wrap layer. Use min. 1/2-in. wide nom. 0.015-in. thick stainless steel bands. When needed, use filament tape as a temporary holding method for the insulation prior to banding to ease installation. Place bands max. 1.5 in. from each blanket edge and max. 10-1/2-in O.C. Tension the banding material to hold the insulation (2) in place without causing any cutting or damage to the insulation or duct.

- 4 . OPTIONAL BANDING ONLY: (Not shown) For ducts having widths of 24 in. or less, place stainless steel bands (min. 1/2-in. wide, nom. 0.015-in. thick) over joints and within the field around the wrap. Locate bands 1-1/2 in. from each edge of the blanket, centered on the overlap. Place a minimum of two additional bands in the field area between the overlaps on maximum 8 in. centers. Pins are not required when this banding technique is used.
- 5 . ACCESS DOOR: (Not shown) When required, mark and cut a clean-out access opening into the duct at mid-height along the horizontal section of the duct. After the duct is insulated, cut a 13 x 13-in opening in the insulation system (2). Then, cut a 10 in. x 10 in. opening into the side of the duct. Cut a 13 x13-in 16 GA plate to be used as a door. Place a min. 1/2-in. thick ceramic fiber gasketing between the door and the opening. Secure the door to the duct using either of two methods. Method 1 - eight (8) 3/4-inch self-drilling sheet metal screws. Place one screw in each of the four corners of the door at a max. 1/4-inch from the edges of the door. Place one screw at the midpoint on each side of the door a max. 1/4-inch from the edge. Method 2 - Weld four 4 x 1/4-in all-thread rods to the duct, one at each corner of the duct so that they are 11-in O.C. Cut a 13 x13-in 16 GA plate to be used as a door. Drill holes in the door to match the rod pattern and seal the duct by overlapping the opening by 1-1/2-in. on all sides. Place the door over the threaded rods. Weld four 5-in long, 12 GA stainless steel insulation pins to the access door corners so that the pins are 9-in O.C. Apply two layers of insulation (2) over the access door. Cut the first layer into a 13 x 13-in square and install it over the pins and covering the door. Cut the second layer into a 15 x 15-in square and install it over the pins and covering the first layer so that a 1-in

overlap exists. Secure blanket to pins with 1-1/2 in. square or round galvanized steel speed clips. Turn down or cut off insulation pins that extend beyond the outer blanket wrap layer. Secure the access door assembly by placing steel tubing over the threaded rod, then apply washers and wing nuts over the threaded rod.

- 6 . SUPPORTS: (Not shown) After the installation of the insulation system is complete, add a typical trapeze support system. Center insulated duct on trapeze hangers so that min. 1-in space exists between insulated duct and rods. Support hanger systems do not need to be wrapped. Attach threaded rods through concrete ceiling and secure using appropriate size washers and nuts or secure threaded rods using appropriate size steel drop in expansion type masonry anchors. Extend trapeze support at least 2-in. on each side of insulated duct and rods. When supporting smaller ducts, shorter length angles are permitted as long as other requirements are met. Options: (1) Horizontal supports a max. 60-in. O.C., starting at the center of the vertical rise portion. Use min. 1/2-in. all-thread rod and secured with 1/2-in hex nuts to

min. 2 x 2 x 1/4-in. steel angle cut 62-in. long to assemble the trapeze supports. Drill 1/2 in. clearance holes drilled 2 in. from each end to accommodate rods. (2) Space supports O.C. so that the load does not exceed 350 lbs between supports. Trapeze supports use min. 5/8-in. all-thread rods and secured with 5/8-in hex nuts to min. 2-1/2 x 2-1/2 x 1/4-in. steel angle for an insulated duct span of max. 64 in. (3) Space supports O.C. so that the load does not exceed 240 lbs between supports. Trapeze supports use min. 1/2-in. all-thread rods and secured with 1/2-in hex nuts to min. 2 x 2 x 1/4-in. steel angles a maximum insulated duct span of max. 49 in. (4) Space supports O.C. so that the load does not exceed 220 lbs between supports. Trapeze supports use min. 1/2-in. all-thread rods and secured with 1/2-in hex nuts to min. 2 x 2 x 1/4-in. steel angles a max. 55 in. long. Rods spaced max. 51-in O.C. with max. 2 in. from the end of the steel angle. (5) Space supports O.C. so that the load does not exceed 250 lbs between supports. Trapeze supports use min. 5/8-in. all-thread rods and secured with 5/8-in hex nuts to min. 2-1/2 x 2-1/2 x 1/4-in. steel angles a max. 70 in. long. Rods spaced max. 66-in O.C. with max. 2 in. from the end of the steel angle.