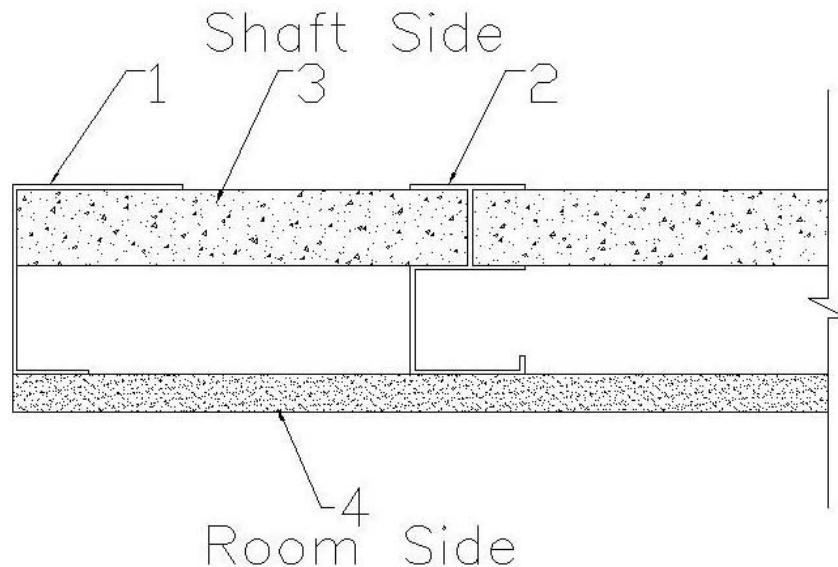


---

**G-P Gypsum, Corp**  
**GP/WA 60-01**  
**ASTM E119 (2008)**  
**1-Hour, Non-Load Bearing**

---



1. **CERTIFIED MANUFACTURER:** G-P Gypsum Corp.

**CERTIFIED PRODUCT:** 1 Hour, Non-Load Bearing Wall

**Certified product is a wall assembly consisting of 5/8", Type X Gypsum Wallboard, Steel studs, and a 1" Gypsum Shaftliner.**

2. **Components**

1. **Floor and Ceiling Runners (not shown):** 'J' shaped runner with unequal legs and 2-1/2" deep fabricated from 25 MSG galvanized steel. Position runners with short leg towards finished side of wall. Runners attached to structural members with steel fasteners located not greater than 24" oc Floor and Ceiling runners to be supplied by others.
2. **Steel Studs:** 'C-T', 'C-H', 'I' shaped studs, 2-1/2" wide x 2-1/4" deep fabricated from 25 MSG galvanized steel. Cut to length 3/4" less than the openings height and spaced 24" oc Steel Studs to be supplied by others.
3. **Gypsum Shaftliner:** 1" thick G-P Gypsum Corp. ToughRock Fireguard® Shaftliner or Dens-Glass Ultra Shaftliner, Type X panels, supplied in nominal 24" widths. The panels are inserted against the long leg of the 'J' runners and into the C section of the steel studs. The panels are attached to the top 'J' runner with three (3) 1-5/8" Type S, self-drilling, self-tapping Bugle head steel screws, one at each edge and one at mid-width of the board. When the panels are attached to the vertical 'J' runners use 1-5/8" Type S, self-drilling, self-tapping Bugle head steel screws spaced 24" oc.
4. **Gypsum Wallboard:** 5/8" thick, 4'0" wide GP Gypsum Corp. ToughRock Fireguard, DensArmor Plus Fireguard, or ToughRock Mold Guard applied vertically or horizontally to the studs with 1" Type S drywall screws spaced 12" oc. The face layer joints are covered with paper tape and joint compound. Exposed screw heads are also covered with joint compound.