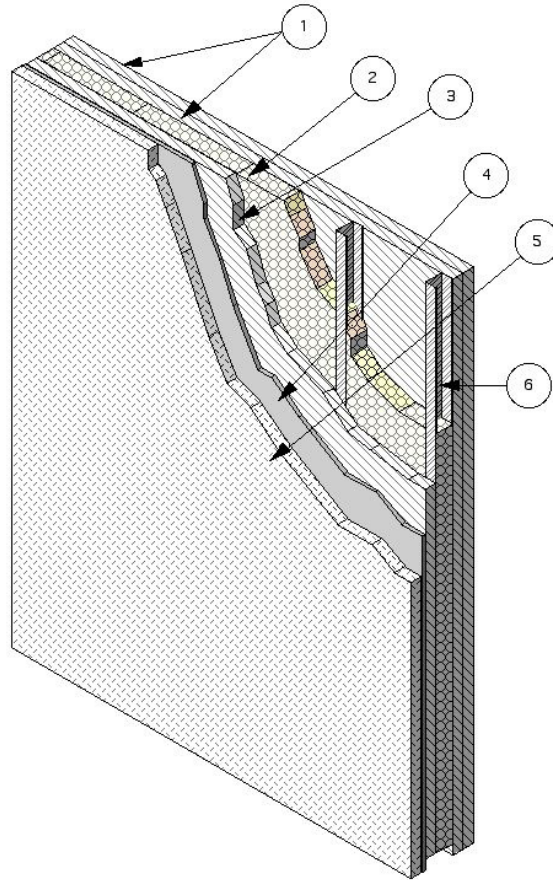

Design No. NBW 330

NON-BEARING WALL

Assembly Rating – 2 hr



1. WALLBOARD, GYPSUM: Base layer 5/8 in. Type X gypsum wallboard or veneer base applied parallel to studs with #6 x 1-1/4 in. long self-drilling bugle head drywall screws, spaced 8 in. o.c. along all studs and runners. Joints staggered 24 in. from opposite side. Face layer 5/8 in. Type X gypsum wallboard or veneer base applied parallel to studs with #6 x 1-5/8 in. long self-drilling bugle head drywall screws, spaced 12 in. o.c. along all studs and runners. Joints staggered 24 in. from base layer. Joint Tape and Compound - vinyl or casein, dry or premixed joint compound applied to face layers of gypsum wallboard in two coats to all exposed screw heads and gypsum wallboard joints. A min. 2-in. wide paper, plastic or fiberglass tape embedded in first layer of compound over joints in gypsum wallboard.
2. INSULATION, MINERAL FIBER: 3-1/2 in. thick, R-11, paper faced glass fiber insulation batts friction fit into stud spaces.
3. WALLBOARD, GYPSUM: One layer 5/8 in. Type X gypsum wallboard or veneer base applied parallel to studs with #6 x 1-1/4 in. long self-drilling bugle head drywall screws, spaced 12 in. o.c. along all studs and runners.
4. PANELS: 48 in. wide, 29 GA pre-punched EZ-Wall Panels applied parallel to studs with #8 x 1-1/4 in. long K Lath screws, spaced 8 in. o.c. along all studs and runners.

Listed Manufacturer:

American Brick Company ----

Composite Roof & Wall Panels

Mechanical Support and Spacing System

EZ-Wall™

5. MASONRY: Nom. 1/2 in. thick x 2-3/16 in. x 7-1/2 in. brick adhered to EZ-Wall Panel with EZ-Wall mastic. Joints filled with cementitious mortar.
6. STEEL STUDS: Min. 1-1/4 in. by 3-5/8 in., No. 18 GSG galvanized steel studs. Max. spacing, 24 in. o.c. Studs inserted in min. 1-1/4 in. by 3-5/8 in., No. 25 GSG galvanized steel floor and ceiling "C" channels. Studs attached with min. #6 x 3/8-in. long steel stud framing screws to channel shaped floor and ceiling runners, which are secured to floor and ceiling with 1-in. concrete fasteners spaced max. 18-in. o.c. Horizontal cross braces formed of runner sections at the 1/3 points. Studs, bracing, and runners covered.