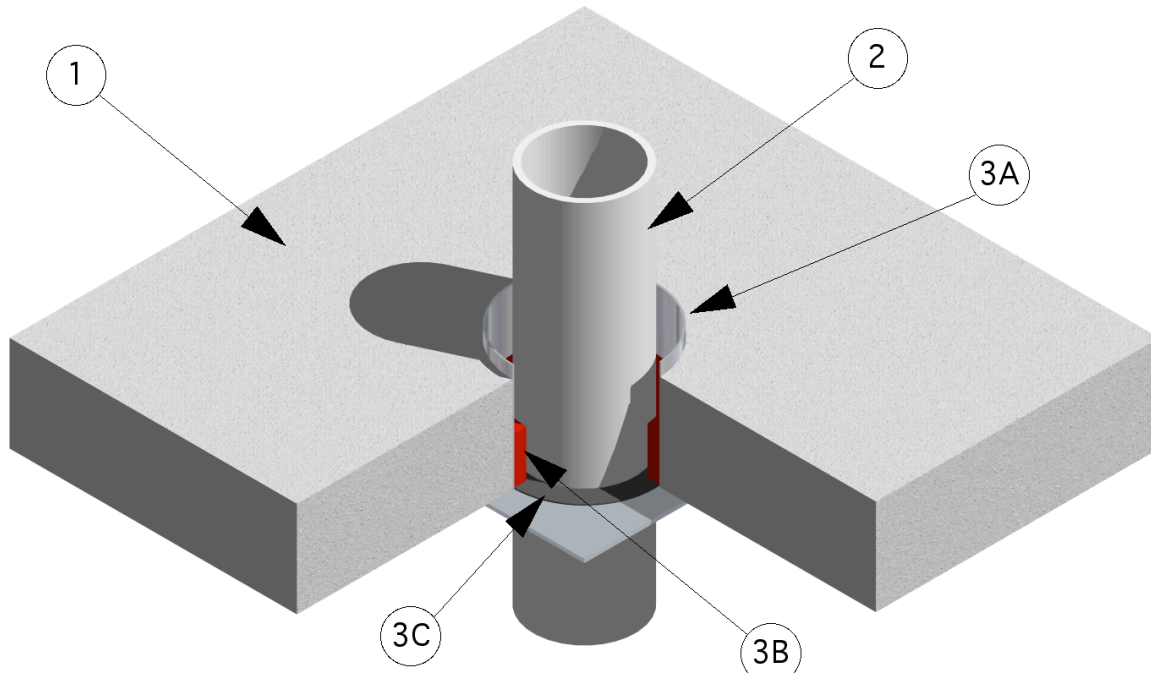


Design No. FS 526 F

FIRE PENETRATION SEAL (Mechanical)

Penetrating Item Type B

(See Table for Assembly F & T-Ratings)



1. FLOOR/CEILING ASSEMBLY: The fire-rated floor/ceiling assembly shall consist of min. 5-1/2 in. thick normal weight (100-150 pcf) reinforced concrete.
2. PENETRATING PIPE: Schedule 40 plastic pipe of either: polyvinyl chloride (PVC) pipe, ABS, or cellular wall PVC (foam-core), penetrating the floor assembly. For use in vented (drain, waste or vent) piping systems. Diameter of penetrating pipe determines the model number of Fyrecan® device to be used (see table).
3. FIRESTOP DEVICE: The Fyrecan® fire stop device is composed of the following:

Listed Manufacturer:

Fire Can Manufacturing Company, Inc.
Firestopping
Firestopping Device

- Fyrecan®
- A. METAL CAN: 26 GA electro-galvanized steel assembly consisting of a rolled tubular section, spot welded along seam, attached to a square mounting flange. The diameter of the tubular section and the dimensions of the square flange are dependent upon the size of the penetrating pipe (see table below). The TWST Tub Box model incorporates a box assembly (5 in. wide x 12 in. long x 3 in. deep), constructed of 26 GA electro-galvanized steel, welded on top of a shortened tube section.
 - B. FIRESTOP FILL MATERIAL: Nom. 0.010 in. thick by 2-1/4 in. wide intumescent strips. Multiple layers are wrapped tightly inside the tubular can section and adhered to the can and to subsequent layers with spray applied contact adhesive. Number of wraps of material is dependent upon the size of the penetrating pipe. For penetrating

Through-Penetration Fire Stop Systems

- pipe sizes 6 in. or greater in diameter, a second row of material is installed immediately above the first, having the same number of layers.
- C. RUBBER GASKET: Natural rubber O-Ring gasket fitting tightly about the penetrating pipe and the tubular can section interior. Used as a smoke and water seal.
- D. URETHANE FOAM: (Not shown) Spray-in-place urethane foam is optional and may be used as an additional water seal provided that it is placed on top of the intumescent strips, forming an air pocket between the penetrating pipe and the intumescent strips.

Design No. FS 526 F						
Design Model No.	Pipe ϕ (in.)	Tube ϕ A (in.)	Tube Height (in.)	Flange Size B (in.)	T-Rating (min.)	F-Rating (min.)
T2	2	3-1/2	5-1/2	4-1/2	23	120
T3	3	5	5-1/2	6	46	120
T4	4	6-1/2	5-1/2	7 1/2	39	120
T6	6	8-1/2	5-1/2	9-1/2	12	120
TWST	1-1/2	3-1/2	3	4	55	120