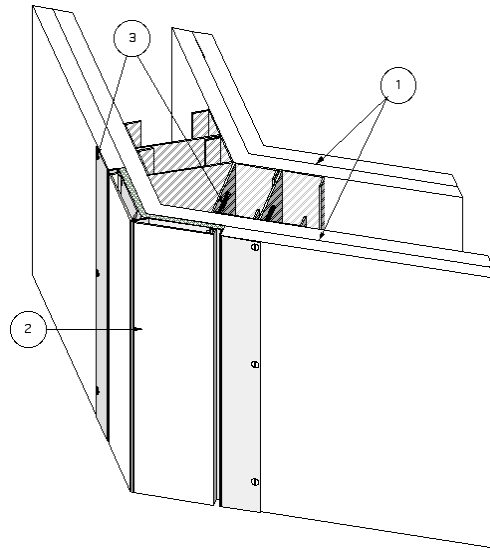
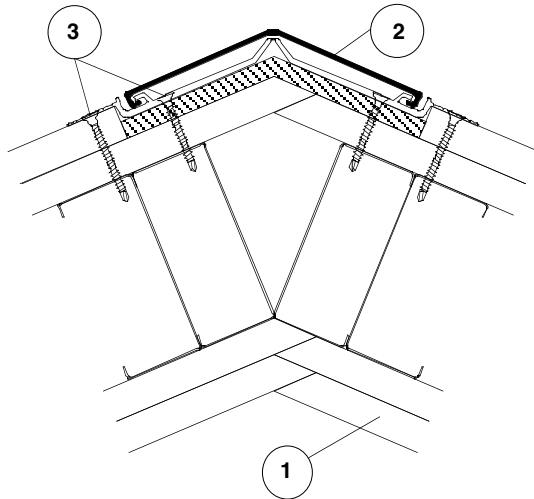


Design No. CG 201

CORNER GUARD (Vertical)

Assembly Rating: 2 hr



1. GYPSUM WALL ASSEMBLY: A two-hour rated wall assembly constructed of the following: 25 GA galvanized steel studs spaced 24 in. o.c. measuring 3-5/8 in. wide with 1-1/4-in. legs. Studs attached with min. #6 x 3/8-in. steel stud framing screws to channel shaped floor and ceiling runners measuring 1/2-in. deep by 3-5/8-in wide, which are secured to floor and ceiling with 1-in. long concrete fasteners spaced max. 18-in. o.c. Studs and runners covered with two layers of 5/8 in. thick, Type X gypsum wallboard on each face. The base layer of gypsum wallboard fastened to steel studs with #6 1-1/8 in. bugle head phillips drywall screws 12 in. o.c. The face layer of gypsum wallboard fastened with #6, 1-5/8 in. long bugle phillips drywall screws spaced 8 in. o.c. Joint Tape and Compound - vinyl or casein, dry or premixed joint compound applied to face layers of gypsum wallboard in two coats to all exposed screw heads and gypsum wallboard joints. A min. 2 in. wide paper, plastic or fiberglass tape embedded in first layer of compound over joints in gypsum wallboard. A min. wall depth of 6 in. created from face layer of gypsum wallboard to face layer of gypsum wallboard.
2. CORNER TREATMENT: The 135° corner guard assembly shall be installed according to

the manufacturer's instructions and be the full height of the wall. The assembly consists of a flexible insulative mat material with a steel cover angle, an extruded Class A (I) polyvinyl chloride (PVC) retainer or an extruded aluminum retainer with a built in shock cushion and a high impact extruded polyvinyl chloride (PVC) cover.

Listed Manufacturer

Pawling Corporation

Door, Wall & Corner Guards

Rigid PVC Profiles

Fire Resistant Flush-Mounted Corner Guard System

CGFT-75 PRO•TEK® Corner Guard System

3. FASTENERS: 2 in. long, self-drilling, self-tapping steel screws spaced 8 in. o.c. on both sides of corner guard.