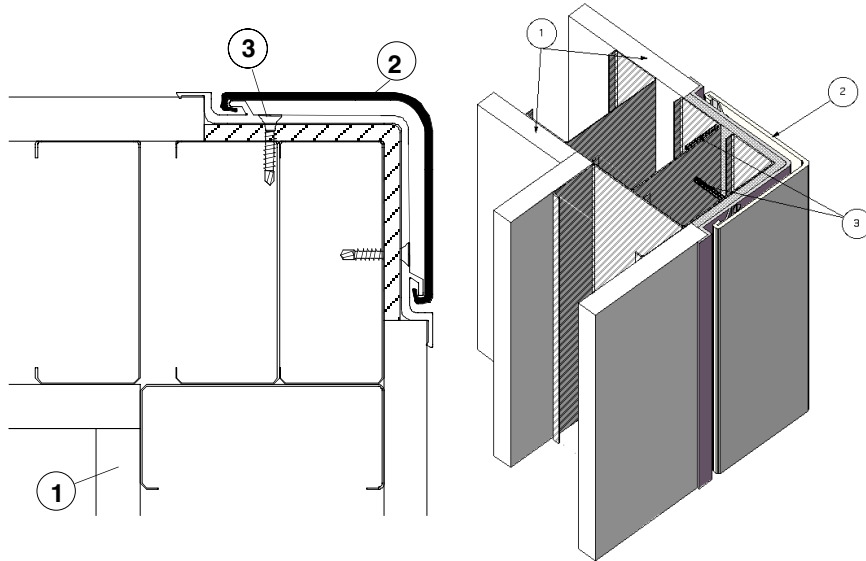


Design No. CG 204

CORNER GUARD (Vertical)

Assembly Rating: 1 hr



1. GYPSUM WALL ASSEMBLY: A one-hour rated wall assembly constructed of the following: 25 GA galvanized steel studs spaced 24 in. o.c. measuring 3-5/8 in. wide with 1-1/4-in. legs. Studs attached with min. #6 x 3/8-in. steel stud framing screws to channel shaped floor and ceiling runners measuring 1/2-in. deep by 3-5/8-in wide, which are secured to floor and ceiling with 1-in. long concrete fasteners spaced max. 18-in. o.c. Studs and runners covered with one layer of 5/8 in. thick, Type X gypsum wallboard on each face. The face layer of gypsum wallboard fastened with #6, 1-5/8 in. long bugle phillips drywall screws spaced 8 in. o.c. Joint Tape and Compound - vinyl or casein, dry or premixed joint compound applied to face layers of gypsum wallboard in two coats to all exposed screw heads and gypsum wallboard joints. A min. 2 in. wide paper, plastic or fiberglass tape embedded in first layer of compound over joints in gypsum wallboard. A min. wall depth of 4-3/4 in. created from face layer of gypsum wallboard to face layer of gypsum wallboard.
2. CORNER TREATMENT The 90o corner guard assembly shall be installed according to the manufacturer's instructions and be the full height of the wall. The assembly consists of a

flexible insulative mat material with a steel cover angle, an extruded Class A (I) polyvinyl chloride (PVC) retainer or an extruded aluminum retainer with a built in shock cushion and a high impact extruded polyvinyl chloride (PVC) cover.

Listed Manufacturer

Pawling Corporation

Door, Wall & Corner Guards

Rigid PVC Profiles

Fire Resistant Flush-Mounted Corner Guard System

CGFP-32 PRO•TEK® Corner Guard Systems

3. FASTENERS: 2 in. long, self-drilling, self-tapping steel screws spaced 8 in. o.c. on both sides of corner guard.