

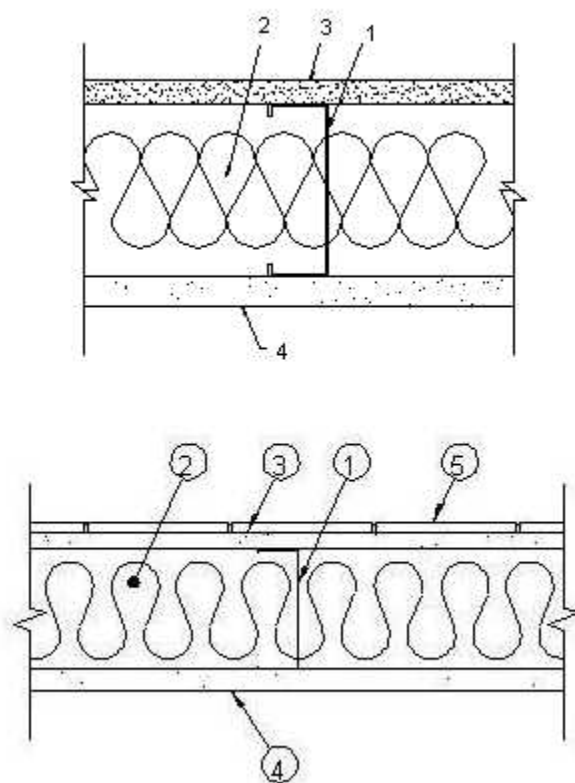
WALL ASSEMBLIES

NATIONAL GYPSUM CO. - Charlotte, NC USA

▼ DESIGN NO. NG/WA 60-01

DESIGN NO. NG/WA 60-01

ASSEMBLY RATING - 1 HOUR, NON-BEARING/UNSYMMETRICAL WALL
ASSEMBLY



1.	Studs: Steel, "C" shape, 3-5/8" wide, 1-1/4" legs, fabricated from minimum 0.019" thick galvanized steel, spaced 16" o.c.
2.	Insulation: 3" thick unfaced mineral wool, friction fit into stud cavities.
3.	Cement Board*: 1/2" PermaBase® , DuraBacker™ or UNIFIX® UNIPAN®, applied horizontally or vertically, with joints staggered to those of opposite side of wall, fastened with 1-1/4" long Type S cement board screws, use S-12 screws for steel thickness of 0.032" or greater, 8" o.c. All joints are taped with a bedding coat and a finish coat and all fastener heads receive one coat of joint treatment.
4.	Gypsum Wallboard: 5/8" Type X, applied vertically, with joints staggered to those of

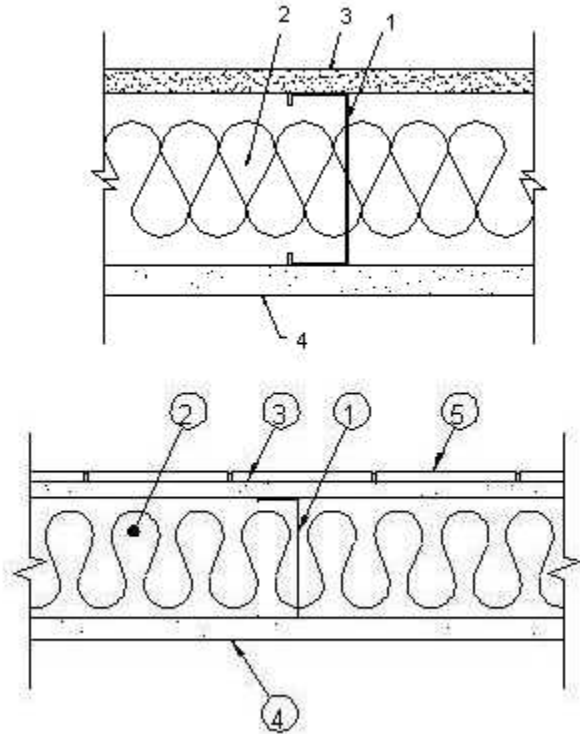
	opposite side of wall, fastened with 1-1/4" long Type S drywall screws, use S-12 screws for steel thickness of 0.032" or greater, 8" o.c. All joints are taped with a bedding coat and a finish coat and all fastener heads receive one coat of joint treatment.
5.	Ceramic Tile: Tile 1/4" thick, joints filled with grout, attached with either latex modified Portland cement mortar or ANSI-A136.1 Type I organic adhesive, applied with 1/4" square notched trowel.

*Component bearing the Warnock Hersey Certification Mark

▼ **DESIGN NO. NG/WA 60-02**

DESIGN NO. NG/WA 60-02

ASSEMBLY RATING - 1 HOUR, NON-BEARING/UNSYMMETRICAL WALL ASSEMBLY



1.	Studs: Steel, "C" shape, 3-5/8" wide, 1-1/4" legs, fabricated from minimum 0.019" thick galvanized steel, spaced 16" o.c.
2.	Insulation: 3" thick unfaced mineral wool, friction fit into stud cavities.
3.	Cement Board*: 1/2" PermaBase® , DuraBacker™ or UNIFIX® UNIPAN®, applied horizontally or vertically, with joints staggered to those of opposite side of wall, fastened with 1-1/4" long type S cement board screws, use S-12 screws for steel thickness of 0.032" or greater, 8" o.c. All joints are taped with a bedding coat and a finish coat and all fastener heads receive one coat of joint treatment.
4.	Gypsum Wallboard: 5/8" type C , applied horizontally or vertically, with joints staggered to those of opposite side of wall, fastened with 1-1/4" long type S drywall screws, use S-12 screws for steel thickness of .032" or greater, 8" o.c. All joints are taped with a bedding coat and a finish coat and all fastener heads receive one coat of joint treatment.
5.	Ceramic Tile: Tile 1/4" thick, joints filled with grout, attached with either latex modified Portland cement mortar or ANSI-A136.1 Type I organic adhesive, applied

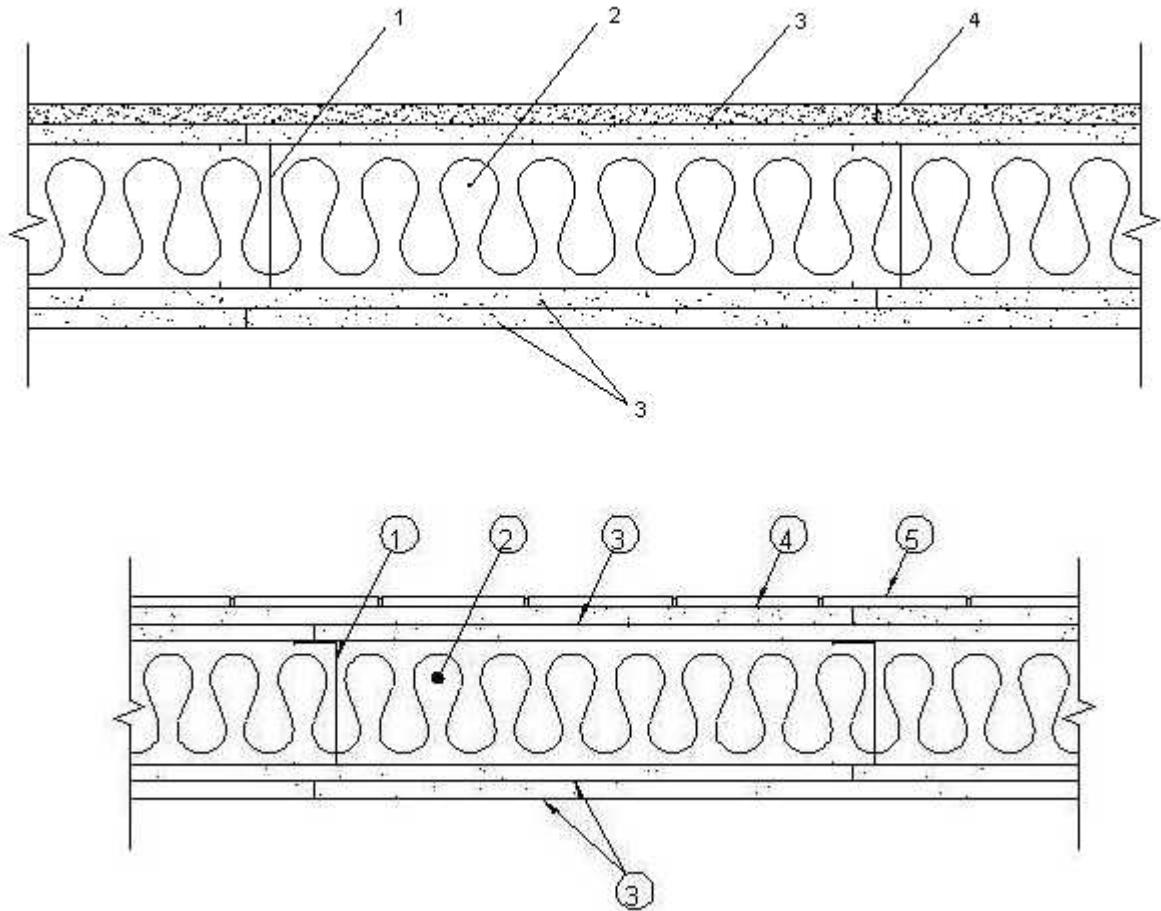
	with 1/4" square notched trowel.
--	----------------------------------

*Component bearing the Warnock Hersey Certification Mark

▼ DESIGN NO. NG/WA 120-01

DESIGN NO. NG/WA 120-01

ASSEMBLY RATING - 2 HOUR, NON-BEARING/UNSYMMETRICAL WALL
ASSEMBLY



1.	Studs: Steel, "C" shape, 3-5/8" wide, 1-1/4" legs, fabricated from minimum 0.019" thick galvanized steel, spaced 16" o.c.
2.	Insulation: 3" thick unfaced mineral wool, friction fit into stud cavities.
3.	Gypsum Wallboard: 1/2" Type C, applied vertically, joints staggered. Base layer fastened with 1" long type S drywall screws, use S-12 screws for steel thickness of .032" or greater, 24" o.c., face layer fastened with 1-5/8" long type S drywall screws, use S-12 screws for steel thickness of .032" or greater, 12" o.c. All face layer joints are taped with a bedding coat and a finish coat and all face layer fastener heads receive one coat of joint treatment.
4.	Cement Board*: 1/2" PermaBase® , DuraBacker™ or UNIFIX® UNIPAN®, applied

	vertically, joints staggered. Face layer fastened with 1-5/8" long type S cement board screws, use S-12 screws for steel thickness of .032" or greater, 8" o.c. All joints are taped with a bedding coat and a finish coat and all fastener heads receive one coat of joint treatment.
5.	Ceramic Tile: Tile 1/4" thick, joints filled with grout, attached with either latex modified Portland cement mortar or ANSI-A136.1 Type I organic adhesive, applied with 1/4" square notched trowel.

*Component bearing the Warnock Hersey Certification Mark

▼ Evaluated to the following...

Design listings are based on, and supported by, proprietary test reports. The test reports further define proprietary design details which make these listings applicable only to the specified products manufactured by the listed manufacturer.

Unless otherwise noted, the assemblies in this section have been evaluated for conformance to the following standards:

ASTM-E119, Standard Methods of Fire Tests of Building Construction and Materials.

CAN/ULC-S101, Standard Methods of Fire Endurance Tests of Building Construction and Materials.

NFPA-251, Fire Tests of Building Construction and Materials.

UBC-7-1-94, Uniform Building Code Standard.

UL-263, Fire Tests of Building Construction and Materials.

Designs listed are minimum construction requirements to achieve fire rating.

Unless otherwise noted, fire ratings apply to tests conducted on both sides.

NOTE: Design No. 408 is not used in this edition.

