



Many fire rated door assemblies are required to have a lite kit installed. Lorient has comprehensive technology in the field of fire resistant glazing, and several systems are available. The choice will depend on a number of factors:

- the type of glass selected
- the fire endurance to be achieved; with or without hose-stream application
- the structure into which the glass will be fitted; the door leaf itself or associated side lites, etc
- the materials of the structure; steel, wood aluminum or mineral composite.

Some of the new and existing popular choices are shown in this leaflet - but we specialize in designing solutions to meet customers' needs! Please call our technical department for detailed advice on your glazing application, or to discuss your specific requirements.

## System-90H

The new Lorient System-90H combines exceptional fire performance with a unique esthetic finish. Successfully tested for 90 minutes fire protection, positive pressure, with hosestream.

System-90H is comprised of a high performance intumescent gasket, fixed to high density fire resistant beading, with a genuine wood veneer. The beads are screw fixed diagonally, through a perforated steel liner to complete the installation.

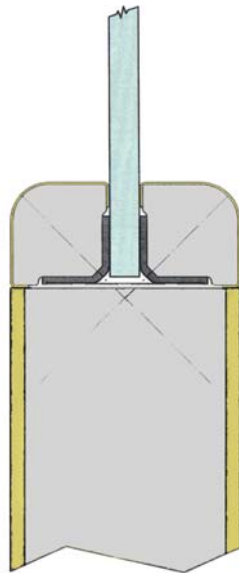
Suitable for use with high density mineral composite door constructions.

Suitable for use with SAFTI SuperLite C/P ceramic glass.

Maximum Area: 1296 square inches for 45-90 minutes; 1310 square inches for 45 minutes only.

Bead dimensions: 3/4" x 3/4".

Available in Oak, Birch and Cherry finishes - others to special order.



## System-321 (GS321)

Three steps, two minutes, one system! The quick, easy and efficient lite kit for 20 minute wood door assemblies.

Lorient System-321 is a unique clip-together glazing system. Supplied as a complete pack of product, System-321 contains everything required to glaze one aperture in a wood door leaf. Lorient "Flexible Figure 1" glazing gasket is supplied affixed to pre-cut glazing beads, together with fire resistant glass already cut to size, and push-fit clips to hold the system securely in place in the door.

System-321 is suitable for use in 20 minute wood fire door assemblies, meeting the requirements of UBC Standard 7-2-97, UL10C and NFPA 252.

A choice of sizes, bead finishes and glass types is offered - please ask for more details.



## System-36 (GS705, GS706 and GS708)

This flexible channel comes in a choice of sizes to suit 5/32"-5/16" (4-8mm) glass types. The gasket simply pushes over the edge of the glass - it is a completely dry operation; there is no need for any additional sealant - and no clean-up operation to finish.

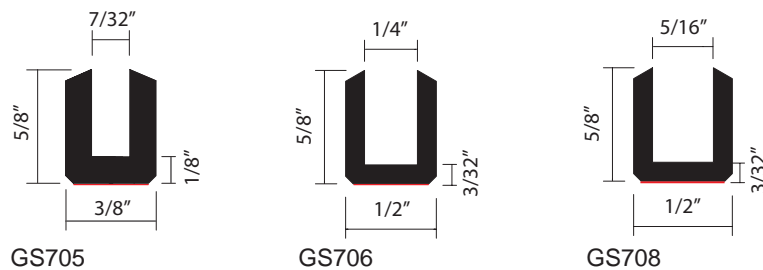
Choose the GS705 for 5/32"-7/32" (4-5mm) glass, the GS706 for 1/4" (6-7mm) glass, and the GS708 for 5/16" (7-8mm) glass. All are suitable for use with Pilkington wired fire glass, Asahi wired fire glass, or FireLite ceramic glass from Technical Glass Products.

All three gaskets can be used for 20 minute wood fire doors, positive pressure (without hose-stream), to a maximum pane size of 1007 square inches. Refer to our listings guidance document for more details.

Also suitable for side lite, transom lite or borrowed lite applications, to a maximum of 3875 square inches, also for 20 minutes (without hose-stream).

It is important that the System-36 gaskets are used with beads of appropriate dimensions. For full technical details, contact Lorient or refer to our listings guidance document.

Both products are supplied on 195ft length coils as standard.



## Flexible Figure 1 (GS905)

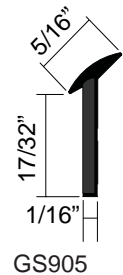
A flexible intumescent gasket with a protective PVC skin, the Flexible Figure 1 is uniquely designed to allow tolerances between door, bead and glass thicknesses to be accommodated.

Flexible Figure 1 is suitable for use in 20 minute wood core doors, tested to UBC Standard 7-2-97, UL10C and NFPA 252. Suitable for use with a variety of fire rated glass types of 5/32"-5/16" - contact Lorient for specific details. Maximum pane size 1007 square inches.

Installation is straightforward, with a choice of dry-fit or "peel-n-stick" application. The gasket is simply applied to beads of appropriate dimensions, cut and mitered to shape, and pinned into position.

Supplied on 150ft coils as standard. Standard colour black; white and tan available to special order.

For full technical details, contact Lorient or refer to our listings guidance document.



**LORIENT**

**Lorient North America**

2121 Capstone Drive, Lexington, KY 40511, USA

Tel: 859 252 7441 Fax: 859 381 1241

e-mail: [info@lorientna.com](mailto:info@lorientna.com)

[www.lorientna.com](http://www.lorientna.com)