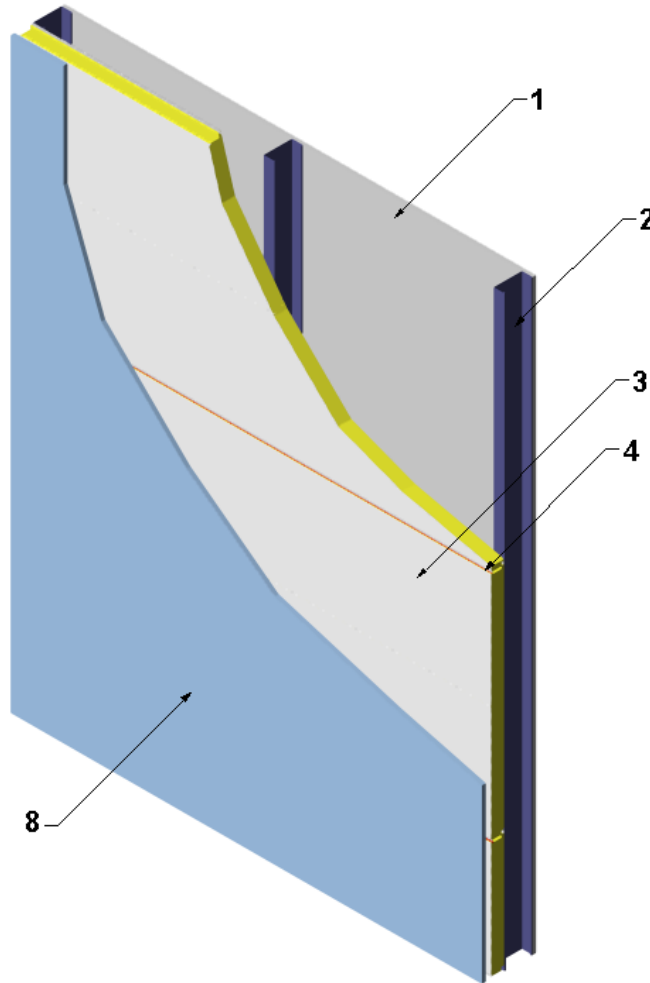

Design Number ENV/IMWP 30-01
Exterior Wall Assemblies
Envolution
Envolution Insulated Metal Panels
NFPA 285 (2012)
Rating: Meets the Requirements



1. GYPSUM BOARD: Install min.1/2 in. thick gypsum board to the interior side of the steel framing (Item 2) or to the interior side of the insulated metal panels (Item 3).
2. STEEL FRAMING): Install wall support framing per manufacturer's specifications.
3. CERTIFIED COMPANY: Envolution.

CERTIFIED PRODUCT: Insulated Metal Wall Panels

MODEL: Envolution Fortress Panel.

INSULATED METAL PANELS: Install horizontal oriented 42 in. wide insulated metal panels to the exterior side of the steel framing (Item 2) or structural members (not shown) and attach at each panel joint to wall framing members or structural members using manufacturer's concealed fastener method. Follow manufacturer's installation instructions. Panels available in the following thicknesses: 2 in., 3 in., or 4 in.

4. JOINT SEALANT: Install a nominal 3/16-in. bead of one-component, urethane or butyl sealant to the tongue & groove panel joints of the insulated metal panels (Item 3).
5. FASTENER (Not shown): Install panel clips and min. #14 self-drilling or self tapping screws within the tongue & groove joints of the insulated metal panels (Item 3) and into the wall framing members (Item 2) or structural member per the manufacturer's specified installation instructions.
6. INSULATION (Not Shown): The perimeter of openings may be insulated with fiberglass or mineral fiber insulation. At opening heads, the insulation may be omitted to provide for clear drainage to the exterior.
7. VERTICAL JOINTS (Not shown): When vertical joints occur above an opening, provide a 3/8 in. separation gap between the ends of the insulated metal panels (Item 3). Fill the gap with 4 pcf mineral fiber insulation. Enclose the vertical joint with min. 28 GA galvanized or Galvalume coated steel flashing on the interior and exterior side of the insulated metal panels and secure using the manufacturer's installation instructions. Insulation and cover are to span the entire length of the vertical joint. Vertical joints occurring horizontally 24 in. or greater away from the opening, may be insulated with glass fiber insulation, mineral fiber insulation or a Listed expandable foam insulation with a flame spread index of 25 or less when evaluated per ASTM E 84 or complying with the requirements of the IBC or other applicable regulatory requirements when those are greater.
8. EXTERIOR VENEER: Install non-combustible exterior wall covering to the exterior side of the insulated metal panels (Item 3) with a min. 1 in. air gap; the non-combustible exterior wall covering and installation shall comply with the International Building Code or other applicable regulatory requirements when those are greater.
9. FLASHING (Not shown): At the perimeter of the wall panel opening cutouts, protect the panel's exposed foam core with min. 26 GA metal or equivalent non-combustible material.

Install flashing in accordance with the manufacturer's installation instructions.