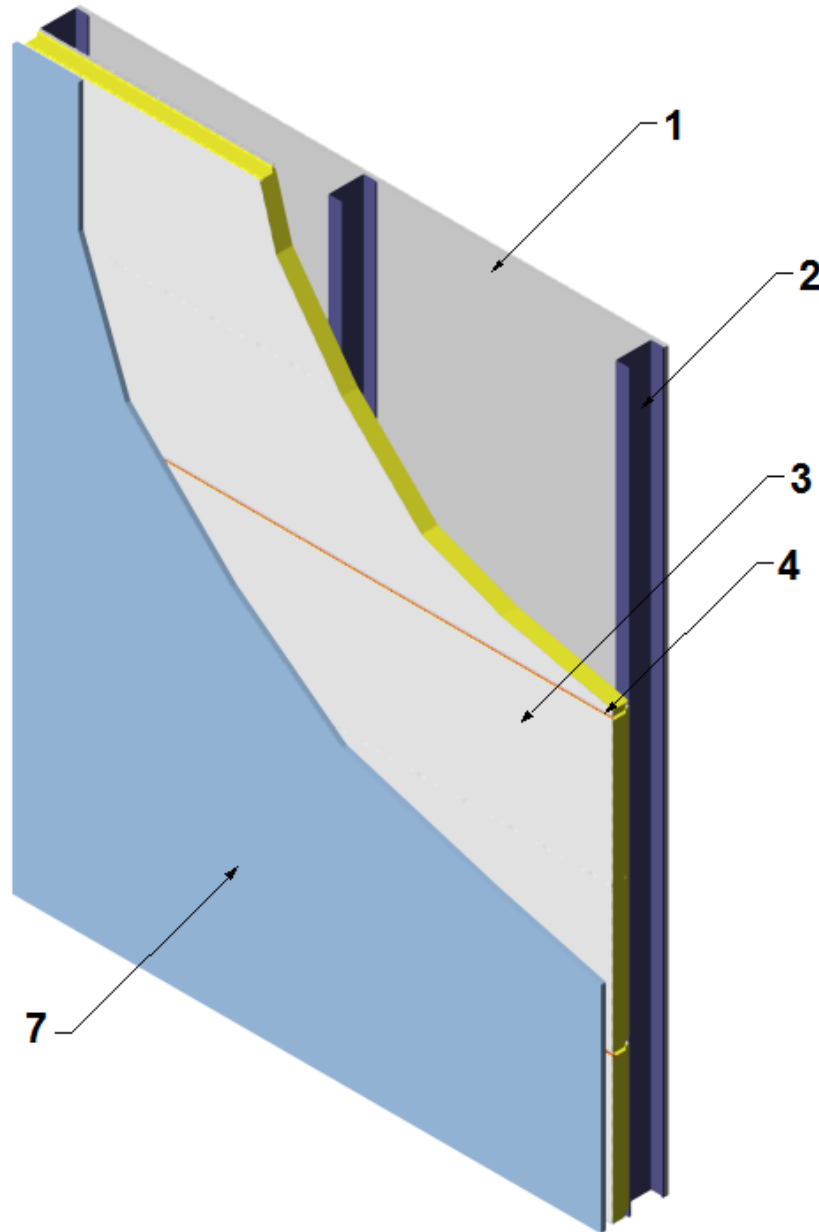


Design Number ENV/IMWP 30-02
Exterior Wall Assemblies
Envolution
Envolution Insulated Metal Panels
CAN/ULC S 134 (1992)

Meets the Requirements of Section 3.1.5.5 of the National Building Code of Canada, 2010



1. GYPSUM BOARD: Install min 1/2 in. thick gypsum board to the interior side of the steel framing (Item 2) if used or to the interior side of the insulated metal panels (Item 3).
2. STEEL FRAMING (Optional): Install wall support steel framing per manufacturer's specifications.
3. CERTIFIED COMPANY: Envolution

CERTIFIED PRODUCT: Insulated Metal Wall Panels

MODEL: Evolution Fortress Panel

INSULATED METAL PANELS: Install 42 in. wide horizontal oriented insulated metal panels to the exterior side of the steel framing (Item 2) or structural members (not shown). and attach at each panel joint to the wall framing members or structural members using manufacturer's concealed fastener method Follow manufacturer's installation instructions. Panels available in the following thicknesses: 2 in., 3 in., or 4 in.

4. JOINT SEALANT: Install a nominal 3/16 in. bead of one-component, urethane or butyl sealant to the tongue & groove panel joints of the insulated metal panels (Item 3).
5. FASTENER (Not shown): Install panel clips and min #14 self-drilling or tapping screws within the tongue & groove joints of the insulated metal panels (Item 3) and into the wall framing members (Item 2) or structural member per the manufacturer's specified installation instructions.
6. VERTICAL JOINTS (Not shown): When vertical joints occur above an opening, provide a 3/8 in. separation gap between the ends of the insulated metal panels (Item 3). Fill the gap with 4 pcf mineral fiber insulation. Enclose the vertical joint with min 28 GA galvanized or Galvalume coated steel flashing on the interior and exterior side of the insulated metal panels and secure using the manufacturer's installation instructions. Insulation and cover are to span the entire length of the vertical joint. Vertical joints occurring horizontally 24 in. or greater away from the opening may be insulated with a Listed glass fiber insulation or mineral fiber insulation or expandable foam sealant with a flame spread index of 25 or less when evaluated per CAN/ULC S-102 or CAN/ULC S-102.2, as applicable, and shall comply with the requirements of

the National Building Code of Canada or other applicable regulatory requirements when those are greater

7. EXTERIOR VENEER: Install noncombustible exterior wall covering to the exterior side of the insulated metal panels (Item 3) with a min 1 in. air gap; the noncombustible exterior wall covering and installation shall comply with the National Building Code of Canada or other applicable regulatory requirements when those are greater.