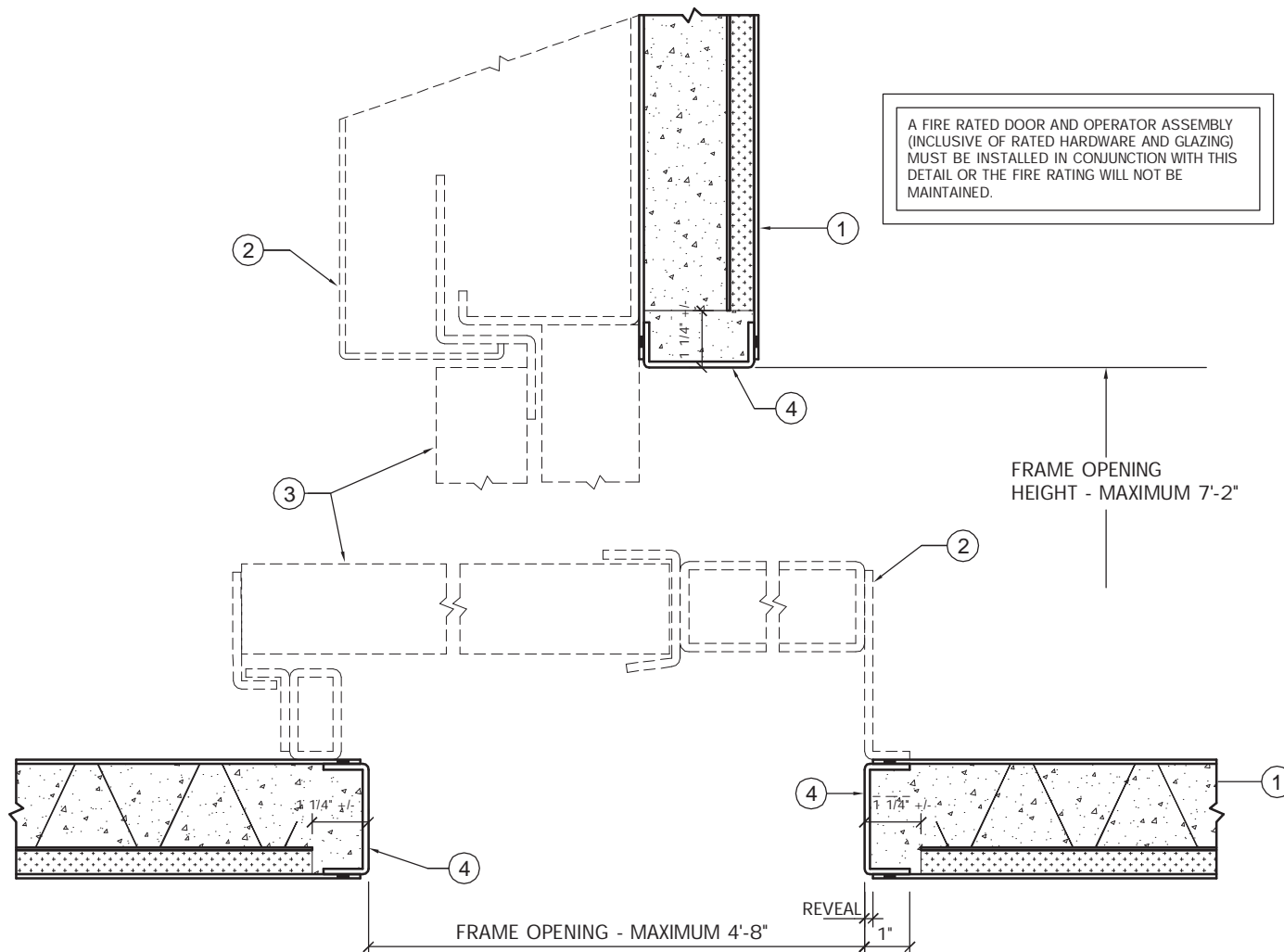


Trussbilt Manufacturing Sliding Door Opening Detail Detail No. F03

Investigated by Intertek for compliance with applicable requirements. Tested to UL 10B. For use with Trussbilt's Fire Rated Wall Panel System TBM/MWP 60-01 or TBM/MWP 120-01
For use with non-bearing wall installations.



1. Trussbilt fire rated wall panel TBM/MWP 60-01 (1 hour rating) or TBM/MWP 120-01 (2 hour rating)
2. Listed sliding door operator welded to grouted side of panel.
3. Listed sliding door.
4. 10 gauge A60 channel frame perimeter welded to both face sheets 3" maximum O.C.