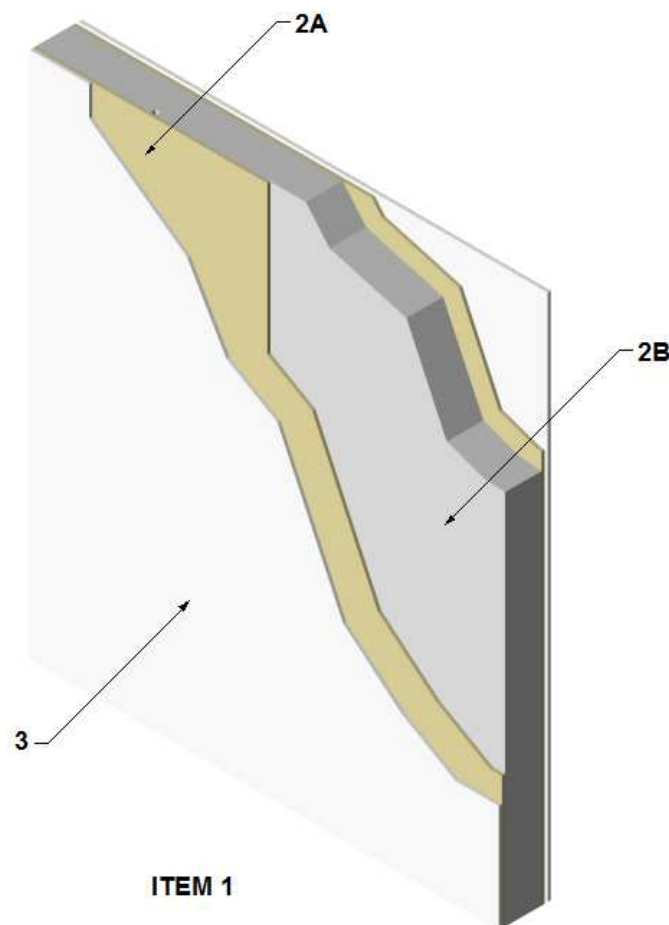

Design Number: TPC / CWP 60-02
EXTERIOR WALL SYSTEMS
Timberline Panel Company, LLC
Timberline 6½ in. Structural Insulated Panels
ASTM E 119 – 2012 Edition
CAN/ULC S 101 – 2007 Edition
Rating – 1 Hour
Restricted Superimposed Load: See Item 1



1. **WALL ASSEMBLY:** Construct a wall assembly using elements described in Items 2 through 4 up to a maximum of 10 feet in height with a maximum restricted superimposed load of 60% of the allowable capacity of the panel.
2. **CERTIFIED COMPANIES:** Timberline Panel Company, LLC

CERTIFIED PRODUCT: Timberline Structural Insulated Panels

WALL PANELS: Install Timberline Structural Insulated Panels consisting of the following elements:

- A. **FACING:** Nominal 7/16 in. thick OSB skins factory bonded to interior and exterior sides of EPS foam core

- (Item 2B) conforming and identified as meeting DOC PS 2-04, Exposure 1, Rated Sheathing with a span index of 24/16 and/or CAN/CSA O325.0, Exterior Grade Sheathing with a span index of 1R24/2F16.
- B. CORE: Use ASTM C578 compliant and Listed Type I EPS (min. 0.9 pcf) with a flame spread rating not exceeding 75 and smoke-developed rating not exceeding 450 per ASTM E84 and/or CAN/ULC S701 compliant and Listed Type 1 EPS with a flame spread rating not exceeding 500 per CAN/ULC S102.2.
- C. ADHESIVE (Not Shown): Facing materials are adhered to the core material using a structural adhesive. The adhesive is applied during the lamination procedure in accordance with the in-plant quality system documentation.
- D. SPLINE (Not Shown): Structural Insulated Panels are interconnected with nominal 2 x 6 No. 2 lumber splines. At each panel joint, one 2 x 6 spline is installed in the precut channels in the foam core of the panel and secured to the skins (Item 2A) using 1-5/8 in. long ring shank steel nails spaced at a nominal 12 in. oc.
3. GYPSUM BOARD: Apply one (1) layer of 5/8 in. thick, Listed Type C gypsum board to the interior and exterior side of the wall assembly (Item 1) oriented vertically. Secure the gypsum board using 1-5/8 in. long, bugle head self-drilling screws spaced nominally 8 in. on center (oc) around the perimeter and 12 in. oc in the field.
- A. JOINT TAPE AND COMPOUND – (Not Shown) Apply a level 2 finish of vinyl or casein, dry or premixed joint compound applied in two coats to all exposed fastener heads and gypsum board joints. Embed minimum 2 in. wide paper, plastic, or fiberglass tape in first layer of compound over joints in gypsum board (Item 3).
4. BEARING PLATES: Panels are attached to nominal 2 x 6 No. 2 lumber top and bottom plates recessed into the precut channel in the foam core. Skins (Item 2A) are attached to the panels using 8d common nails spaced nominal 6 in. oc. Prior to installing, apply a layer of acrylic latex caulk across the mating face with the EPS foam core (Item 2B).