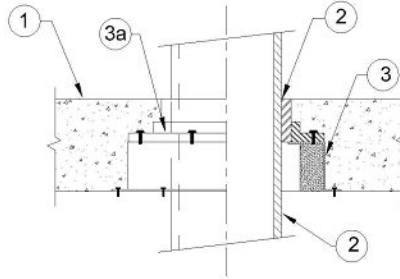


DESIGN NO. PS/PH 120-16
HORIZONTAL (FLOOR); RATINGS: ASTM-E814 - 2 HOUR (F, T)
TEST PRESSURE DIFFERENTIAL - 2.5 Pa (0.01" OF WATER) MINIMUM



1	Floor: Minimum 4-1/2" thick concrete. Where floor slab thickness is less than 5-1/2", masonry grout is applied around the mounting flange of the firestop device, flush to the top of the mounting flange to a 3" width.
2	Pipe Materials & Pipe Support: Maximum 6" diameter Sch. 40 PVC solid core pipe. Supported at penetration by solvent cementing the plastic pass through pipe to the PVC sleeve coupling.
3	Firestop System Components: Factory built 9" by 8-1/2" by 4", 22 gauge metal box with built-in 3/4" wide by 4" high single intumescent red wrap strips tightly installed on all four sides. a) ProSet PVC mounting flange with PVC coupling pipe factory mounted to metal box.