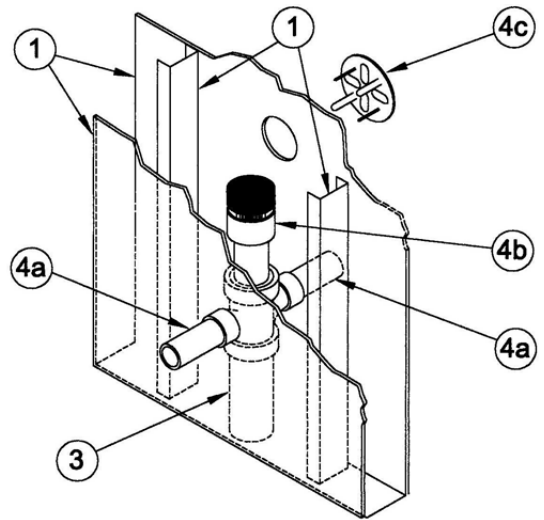


DESIGN NO. PS/PV 120-05
TEST PRESSURE DIFFERENTIAL - 2.5 Pa (0.01" OF WATER) MINIMUM



1	Wall: Gypsum board/steel or wood stud wall, with minimum 2-1/2" cavity width, having one- or two-hour fire rating.
2	Pipe Support (Not Shown): Pipe shall be supported on both sides of the wall assembly by connecting to a trap adapter and/or trap connecting to the lavatory or sink fixture
3	Pipe Material: Nominal 2" diameter PVC, ABS Sch. 40 solid or cell-core pipe. Pipe to be rigidly supported within the cavity of the wall.
4	Firestop Device: a) ProSet P-90 Hi-Temp Fire Rated 1-1/2" PVC pipe*. b) ProSet P25112 Fire Rated Plumbing Air Admittance Valve*. c) ProSet Air Intake Grille* fits into a 2" drilled hole through the one or two layer gypsum wall.

*Components bearing the Warnock Hersey Certification Mark.