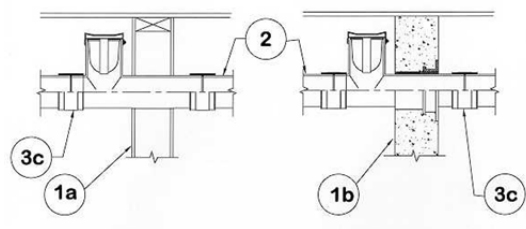


**DESIGN NO. PS/PV 120-04**

**VERTICAL (WALL) SEE ITEM 1. RATINGS: ASTM-E814 - 2 & 4 HRS (F), 0 MIN. (T) SEE ITEM 1\*\*. TEST PRESSURE DIFFERENTIAL - 2.5 Pa (0.01" OF WATER) MINIMUM**



1	<b>Wall Assembly:</b> a) One or two hour rated gypsum board/steel or wood stud wall with minimum 2-1/2" wall cavity. b) Minimum 5" thick normal weight concrete or classified concrete blocks. **When concrete or block wall is minimum 8" thick. F rating is 4 hours.
2	<b>Pipe Material &amp; Pipe Support:</b> Maximum 4" diameter Sch. 40 ABS, PP or Cellular core PVC. Tee fitting to be reliable supported on tee side of device through the gypsum wall. Branch pipe to be reliable supported on both sides of no-hub couplings.
3	<b>Firestop Device:</b> a) C25816-T* 2", C35816-T* 3" & C45816-T* 4" Cast Iron Code Red Tees. b) P2543H-G * 2", P2543H-G* 3" & P4543H-G* 4" or cored Sleeve Coupling. c) S25470 2", S35470 3" & S45470 No-hub adapter coupling.

\*Components bearing the Warnock Hersey Certification Mark