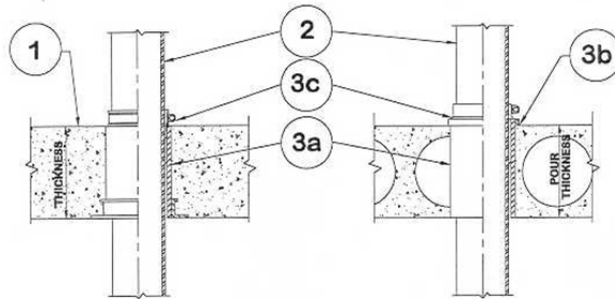


DESIGN NO. PS/PHV 120-05
HORIZONTAL (FLOOR), VERTICAL (WALL) SEE ITEM 1.
RATINGS: ASTM-E814 - 2 HRS (F), 2 HRS (T)
TEST PRESSURE DIFFERENTIAL - 2.5 Pa (0.01" OF WATER) MINIMUM



1	Floor: Minimum 4-1/2" thick normal density concrete slab or 7-1/2" thick hollowcore precast concrete floor units. Fluted decks with 2-1/2" concrete slab, rating is 1 hour FT. Wall: Minimum 6" thick normal density concrete slab.
2	Pipe Materials & Pipe Support: Pressure Piping, CPVC Sch. 40 or tubing wall thickness, maximum diameter 3". Pressure piping, CPVC Sch. 80 or tubing wall thickness, maximum diameter 6". Vertical riser pass through pipe is supported by the ProSet riser Support firestop device.
3	Firestop System Components: <ul style="list-style-type: none"> a. ProSet PVC Coupling*, cast-in-place, cored hole coupling*, length equal to slab thickness. b. (Optional) ProSet waterproofing caulk PS 35. c. ProSet Riser Clamp installed at top of coupling only for floors and both sides of coupling for walls.

*Component bearing the Warnock Hersey Certification Mark