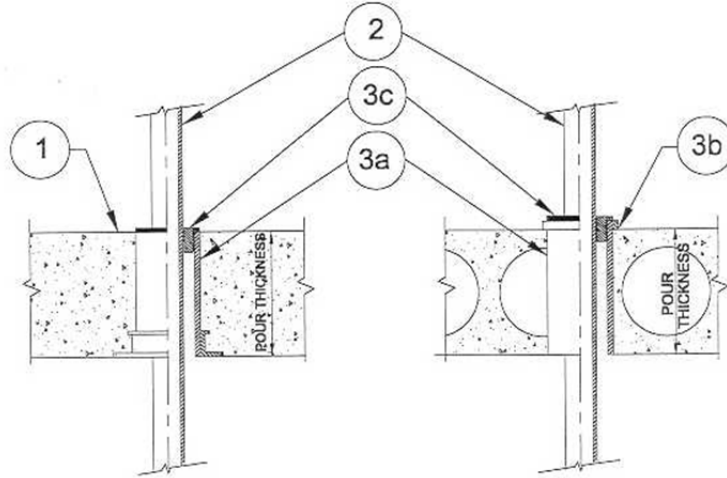


DESIGN NO. PS/PHV 120-03
HORIZONTAL (FLOOR), VERTICAL (WALL) SEE ITEM 1.
RATINGS: ASTM-E814 - 2 HRS (F), 0 HRS (T)
TEST PRESSURE DIFFERENTIAL - 2.5 Pa (0.01" OF WATER) MINIMUM



1	Floor: Minimum 4-1/2" thick normal density concrete slab or 7-1/2" thick hollowcore precast concrete floor units. Fluted decks with 2-1/2" concrete slab, rating is 1 hour F. Wall: Minimum 6" thick normal density concrete slab.
2	Pipe Material & Pipe Support: Pressure piping, copper, metallic tubing, wall thickness, maximum diameter 1 1/2". Vertical pass through pipe can be supported by the ProSeal Plug firestop device.
3	Firestop System Components: a. ProSet PVC Coupling*, cast-in-place, cored hole coupling*. b. ProSet Seal Ring for cored hole sleeve and (Optional) ProSet Waterproofing Caulk PS 35. c. ProSet "Black ProSeal Plug" installed at top of coupling only for floors and on both sides of coupling walls.

*Component bearing the Warnock Hersey Certification Mark