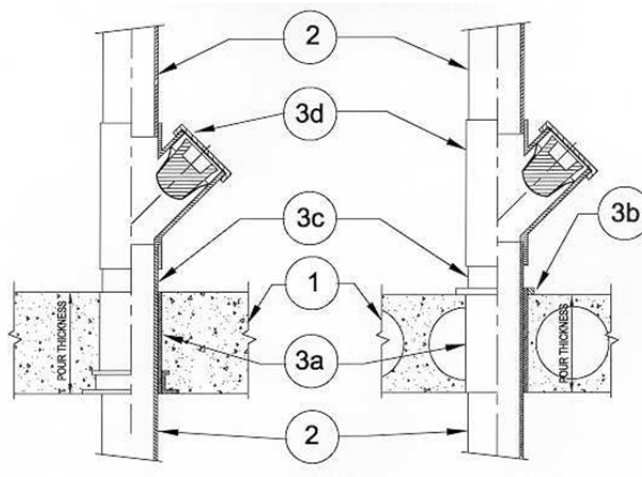


DESIGN NO. PS/PH 120-03
HORIZONTAL (FLOOR) - SEE ITEM 1, RATINGS: ASTM-E814 - 2 HRS (F), 2 HRS (T)
TEST PRESSURE DIFFERENTIAL - 2.5 Pa (0.01" OF WATER) MINIMUM



1	Floor: Minimum 4-1/2" thick normal density concrete slab or 7-1/2" thick hollowcore precast concrete floor units. Fluted decks with 2-1/2" concrete slab, rating is 1 hour FT.
2	Pipe Material & Pipe Support: 2" through 4" ABS, PVC, Solid or Cell-core Pipe. Vertical riser pipe is supported by the firestop device.
3	Firestop System Components: a. ProSet PVC Coupling, cast-in-place*, cored hole coupling*. b. (Optional) ProSet waterproofing caulk PS35. c. Sch. 40 PVC pipe solvent welded into coupling. d. ProSet "Code Red" Firestop Wye Fitting* assembled as per manufacturer's instructions.

*Component bearing the Warnock Hersey Certification Mark