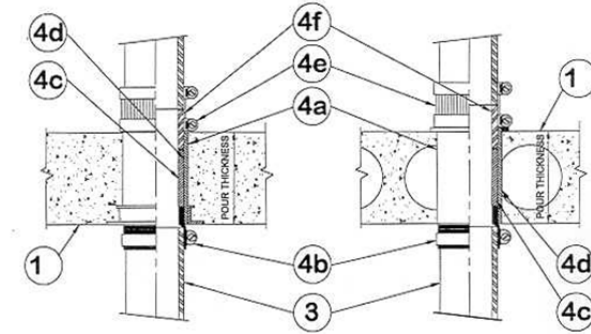


DESIGN NO. PS/PH 120-01
HORIZONTAL (FLOOR), RATINGS: ASTM-E814 - 2 HOURS. (F), 65 MIN. (T)
TEST PRESSURE DIFFERENTIAL - 2.5 Pa (0.01" OF WATER) MINIMUM



1	Floor: Minimum 4-1/2" thick normal density concrete slab or 7-1/2" thick hollow core precast concrete floor units.
2	Pipe Support (not shown): Support for the riser pipe is provided by connecting the pipe to the penetration firestop device.
3	Pipe Material: Cast iron, maximum diameter 4". Sch.40 PVC. One transition from Iron to PVC or PVC to Iron permitted per stack.
4	Firestop System Components: a. ProSet PVC Coupling*, cast-in-place, or Cored Hole Coupling*, length equal to slab. b. ProSet EZ Flex PVC coupling* solvent welded into bottom. c. PVC insert, Sch. 40 pipe to make up top socket. d. PVC thin wall pipe over a special cast iron liner pipe. e. Or use ProSet P-90 Hi-temp PVC fire rated pipe* in place of cast iron liner. f. ProSet mechanical joint coupling*, or equivalent.