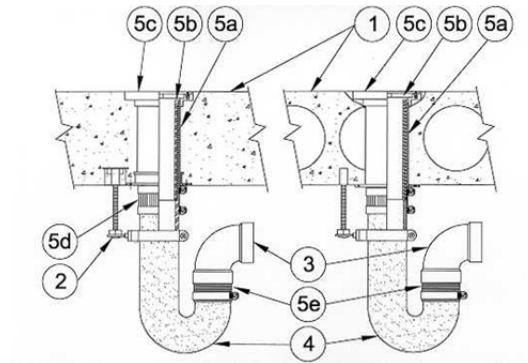


**DESIGN NO. PS/PH 120-02**  
**HORIZONTAL (FLOOR), RATINGS: ASTM-E814 - 2 HRS (F), 0 MIN. (T)**  
**TEST PRESSURE DIFFERENTIAL - 2.5 Pa (0.01" OF WATER) MINIMUM**



1	<b>Floor :</b> Minimum 4" thick normal density concrete slab or 7-1/2" thick hollow core precast concrete floor units. Fluted decks with 2-1/2" concrete slab, rating is 1 hour F.
2	<b>Pipe Support:</b> ProSet hanger Type S-01, or other reliable support.
3	<b>Pipe Material:</b> ABS, PVC, Cell-core pipe or Cast Iron maximum diameter 4".
4	<b>J-Bend P-Trap:</b> Cast iron or Plastic, maximum diameter 4".
5	<b>Firestop System Components:</b> <b>a.</b> ProSet PVC Coupling, cast-in-place* or cored hole coupling*. <b>b.</b> Cast iron and thin wall PVC liner, extends from top of coupling to 1" below coupling. Optional P-90 PVC pipe can be substituted on the 2" size drain. <b>c.</b> One of the following top assemblies; Shower Drain*, Floor Drain*, Clean-Out Cover*, Domed Roof Drain*. <b>d.</b> ProSet mechanical joint adapter coupling. <b>e.</b> ProSet EZ Flex* PVC coupling.

\*Component bearing the Warnock Hersey Certification Mark