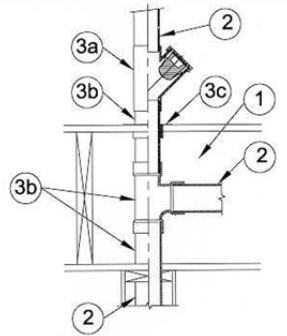


DESIGN NO. PS/PH 120-04
HORIZONTAL (FLOOR), RATINGS: ASTM-E814 - 2 HRS (F), 2 HRS (T) SEE ITEM 1
TEST PRESSURE DIFFERENTIAL - 2.5 Pa (0.01" OF WATER) MINIMUM



1	Floor: One-hour rated or Two-hour rated wood framed/gypsum wallboard floor/ceiling assembly. F rating is limited to that of the floor/ceiling assembly.
2	Pipe Material & Pipe Support: Maximum 4" diameter Sch. 40 PVC, ABS, Solid or Cell-core pipe. Vertical riser pipe can be supported by ProSet's riser support or other reliable support.
3	Firestop System Components: a. ProSet "Code Red" Firestop Wye Fitting* assembled as per manufacturer's instruction. b. Sch 40 P-90 PVC pipe* and ASTM-D2665 fittings, extending through ceiling membrane, and floor membrane. 1-1/2" size P-90 pipe may pass through floor/ceiling membranes without using the Firestop Wye Fitting Device. c. PVC Riser Support Fitting (optional) to accommodate 1-1/2" to 4" P-90 pipe. Required when annular space or gap around pipe exceeds 1/4" to a maximum of 1/2" where pipe passes through wood, plywood, gypsum membranes and when pipe support is desired. Alternately, these annular spaces or gaps may be sealed with a silicone firestop sealant applied to the full depth of the membrane.

*Component bearing the Warnock Hersey Certification Mark