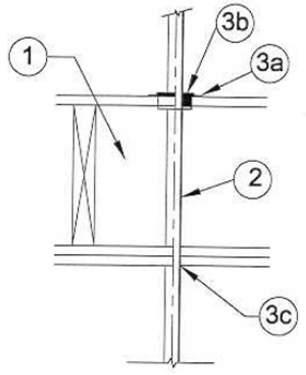


DESIGN NO. PS/PH 120-05
HORIZONTAL (FLOOR), RATINGS: ASTM-E814 - 2 HRS (F), 2 HRS (T)
TEST PRESSURE DIFFERENTIAL - 2.5 Pa (0.01" OF WATER) MINIMUM



1	Floor/Ceiling Assembly: One-hour rated or Two-hour rated wood framed/gypsum wallboard floor/ceiling assembly. Maximum 1/4" annular space around pipe where it passes through the ceiling.
2	Pipe Material: Maximum 1" ID CPVC or PVC.
3	Firestop System Components: a. ProSet Riser Support Fittings installed in 3" diameter hole. b. ProSeal Plug installed on top with foil tape protection wrap around pipe where plug touches pipe. c. Gypsum joint compound packed into annular space around pipe. Note: Foil tape used around pipe at plug to prevent plasticizer migration from the plug to the pipe.

*Component bearing the Warnock Hersey Certification Mark