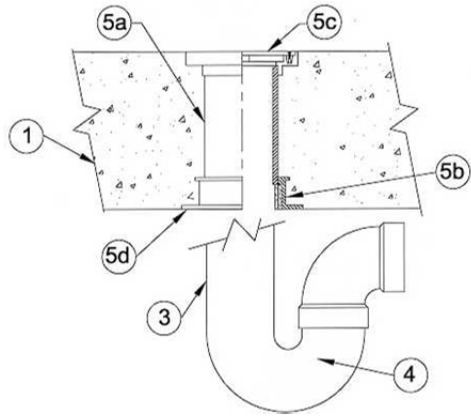


DESIGN NO. PS/PH 120-07
HORIZONTAL (FLOOR), RATINGS: ASTM-E814 - 2 HRS (F), 0 HRS (T)
TEST PRESSURE DIFFERENTIAL - 2.5 Pa (0.01" OF WATER) MINIMUM



1	Floor: Minimum 4" thick normal density concrete slab.
2	Pipe Support: Pipe support by solvent cementing the trap extension or pipe to sleeve coupling.
3	Pipe Material: PVC, Solid or Cell-core Pass-Through Pipe (Stacks), maximum 4" diameter (not shown).
4	P-Trap: ABS, PVC maximum 4" diameter.
5	Firestop System Components: a. ProSet PVC Coupling*, cast-in-place. b. ProSet Self-Seal Intumescent Wrap Strips*: 1 wrap for 2" pipe, 2 wraps for 3" pipe. c. Floor Drain, Shower Drain Assembly (shown) d. ProSet Self Seal Mounting Flange*.

*Component bearing the Warnock Hersey Certification Mark