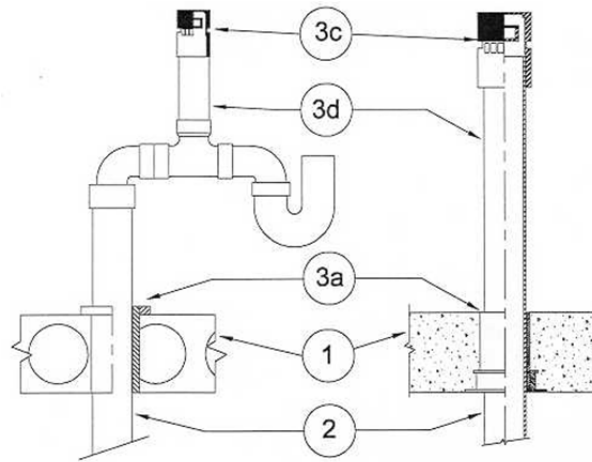


DESIGN NO. PS/PH 120-08

**HORIZONTAL (FLOOR) - SEE ITEM 1, RATINGS: ASTM-E814 - 2 HRS (F), 2 HRS (T) SEE ITEM 1;
TEST PRESSURE DIFFERENTIAL - 2.5 Pa (0.01" OF WATER) MINIMUM**



1	Floor: Minimum 4-1/2" thick normal density concrete slab or 7-1/2" thick hollow core precast concrete floor units. 2-1/2" concrete has a one hour FT rating.
2	Pipe Materials & Pipe Support: Maximum 3" diameter Sch. 40 PVC, ABS or cellular core pipe. Vertical rise pipe is supported by solvent cementing the pass through pipe to the firestop device.
3	Firestop System Components: a) ProSet PVC Coupling, Cast-in place* or Cored hole Coupling*. b) ProSet Sch. 40 P-90 PVC pipe*. 18" minimum length must be used for 3" penetration. Regular PVC Sch. 40 pipe can be used for 2" and 1-1/2" penetrations. c) ProSet P-25112 "Branch", "Main" combination Fire Stop Device Air Vent Valve*.

*Component bearing the Warnock Hersey Certification Mark.