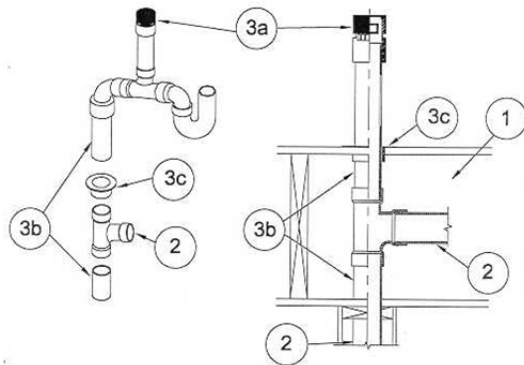


DESIGN NO. PS/PH 120-09
HORIZONTAL (FLOOR), RATINGS: ASTM-E814 - 2 HRS (F), 2 HOURS (T) SEE ITEM 1
TEST PRESSURE DIFFERENTIAL - 2.5 Pa (0.01" OF WATER) MINIMUM



1	Floor/Ceiling Assembly: One-hour or two hour rated wood framed/gypsum wallboard floor/ceiling assembly. F rating is limited to that of the floor/ceiling assembly.
2	Pipe Materials & Pipe Support: Maximum 3" diameter Sch. 40 PVC, ABS or cellular core pipe. Vertical riser pipe can be supported by ProSet's Riser Support Fitting or other reliable methods.
3	Firestop System Component: a) ProSet P-25112 "Branch", "Main" combination Fire Stop Device Air Vent Valve*. b) ProSet Sch. 40 P-90 PVC pipe* and ASTM-D2665 fittings, P-90 pipe must extend through ceiling membrane and floor membrane. c) PVC Riser Support Fitting (optional) to accommodate 1-1/2" to 3" pipe. Required when annular space or gap around pipe exceeds 1/4" to a maximum of 1/2" where pipe passes through wood, plywood, or gypsum membranes and when pipe support is desired. Alternately, these annular spaces or gaps may be sealed with a silicone firestop sealant applied to the full depth of the membrane.

*Component bearing the Warnock Hersey Certification Mark.