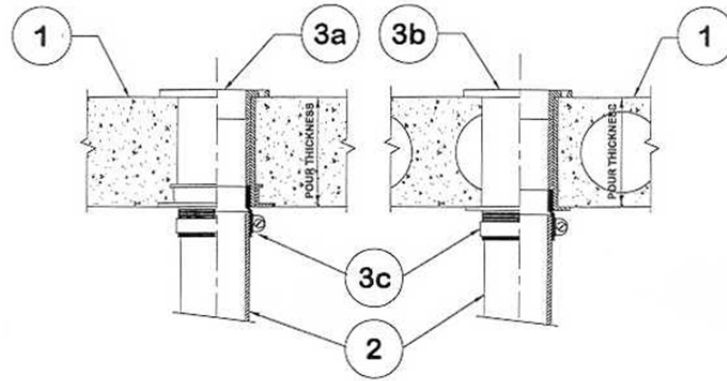


DESIGN NO. PS/PH 120-13

**HORIZONTAL (FLOOR) SEE ITEM 1. RATINGS: ASTM-E814 - 2 & 3 HRS (F), 2 HRS (T) SEE ITEM 1.
TEST PRESSURE DIFFERENTIAL - 2.5 Pa (0.01" OF WATER) MINIMUM**



1	Floor: Minimum 4" thick normal density concrete slab or 7-1/2" thick hollowcore precast concrete floor units. Fluted decks with 2-1/2" concrete slab, rating is 1 hour F. When concrete or hollowcore is 7-1/2" or more the FT rating is 3 hours.
2	Pipe Material & Pipe Support: 3" or 4" Cast Iron or Copper DWV Closet or 1/4 bend can be supported by the firestop device.
3	Firestop Device: a) Cast-in P3544H* 3" & P4544H* 4". b) Inserted in cored hole, P3554H* 3" & P4554H* 4". c) Adapter Flex Coupling P35470 3" & P45470 4".
4	Water Closet (Not Shown): Floor mounted closet mount to closet flange.

*Components bearing the Warnock Hersey Certification Mark.