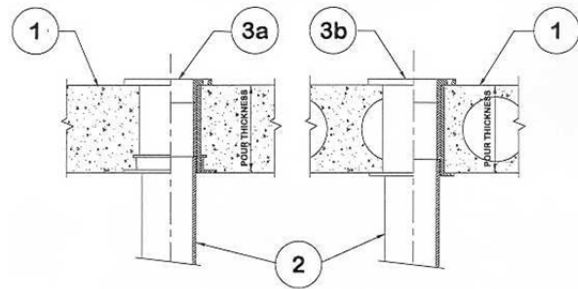


DESIGN NO. PS/PH 120-15

**HORIZONTAL (FLOOR) SEE ITEM 1. RATINGS: ASTM-E814 - 2 & 3 HRS (F), 2 HRS (T) SEE ITEM 1.
TEST PRESSURE DIFFERENTIAL - 2.5 Pa (0.01" OF WATER) MINIMUM**



1	Floor: Minimum 4" thick normal density concrete slab or 7-1/2" thick hollow core precast concrete floor units. Fluted decks with 2-1/2" concrete slab, the FT rating is 1 hour. When concrete or hollow core is 7-1/2" or more the FT rating is 3 hours.
2	Pipe Material & Pipe Support: 3", 4" ABS or Cellular core PVC closet or 1/4 bend can be supported by solvent cementing to the embedded firestop device.
3	Firestop Device: a) Cast-in P3544H8 3" & P4544H* 4". b) Inserted Sleeve P3554H* 3" & P4554H* 4". 4" core for 3", 5" core for 4".
4	Water Closet (Not Shown): Floor mounted closet mount to closet flange.

*Components bearing the Warnock Hersey Certification Mark.