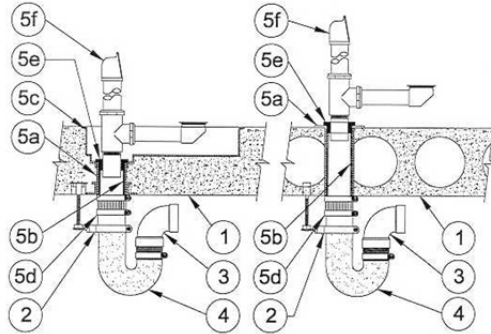


**DESIGN NO. PS/PH 180-01**  
**HORIZONTAL (FLOOR), RATINGS: ASTM-E814 - 3 HRS (F), 3 HRS (T)**  
**TEST PRESSURE DIFFERENTIAL - 2.5 Pa (0.01" OF WATER) MINIMUM**



1	<b>Floor:</b> Minimum 8" thick normal density concrete slab or 7-1/2" thick hollow core precast concrete floor unit.
2	<b>Pipe Support:</b> ProSet Hanger Type S-01, or other reliable support.
3	<b>Pipe Material:</b> ABS or Cellular PVC or Cast Iron.
4	<b>J-Bend P-Trap:</b> Cast iron with plastic elbow, maximum diameter 2".
5	<b>Firestop System Components:</b> <b>a.</b> ProSet PVC Coupling, cast-in-place*, cored hole coupling*. <b>b.</b> Cast iron and thin wall PVC liner or ProSet's P-90 PVC Pipe. <b>c.</b> ProSet Tub Box, Polystyrene, nominal 8-1/2" x 13-3/4" x 2-1/2" in depth, with adjustable legs. <b>d.</b> ProSet mechanical joint adapter coupling. <b>e.</b> ProSet Tub Bushing, nominal 1-1/2", seated in cast iron liner. <b>f.</b> Waste/Overflow Fitting, nominal 1-1/2" brass, ABS, PVC assembly.

\*Component bearing the Warnock Hersey Certification Mark