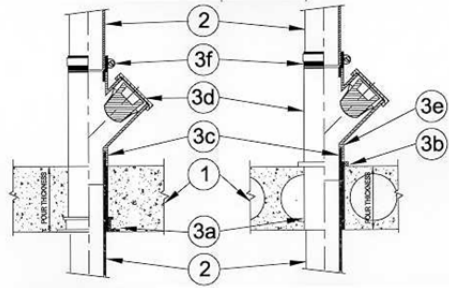


**DESIGN NO. PS/PH 180-02**  
**HORIZONTAL (FLOOR) - SEE ITEM 1. RATINGS: ASTM-E814 - 3 HRS (F), 2 HRS (T).**  
**TEST PRESSURE DIFFERENTIAL - 2.5 Pa (0.01" OF WATER) MINIMUM**



1	<b>Floor:</b> Minimum 4-1/2" thick normal density concrete slab or 7-1/2" thick hollow core precast concrete floor units. Flute decks with 2-1/2" concrete slab, rating is 1 hour FT.
2	<b>Pipe Materials &amp; Pipe Support:</b> Sch. 40 ABS, PVC, Solid or Cell-core pipe 2" to 6" diameter, vented, unvented. Vertical riser pipe can be supported by solvent cementing the pipe to the firestop device.
3	<b>Firestop System Components:</b> <b>a.</b> ProSet PVC Coupling, cast-in-place*, cored hole coupling*. <b>b.</b> (Optional) ProSet waterproofing caulk PS35. <b>c. Option 1</b> (0.20" of water or 50 Pa pressure differential) - ProSet P-90 or cast iron & PVC liner, solvent welded to coupling. <b>Option 2</b> (0.01" of water pressure differential) - Sch. 40 PVC liner solvent welded into coupling; alternatively the pipe may be inserted into the coupling to the level of the PVC insert. <b>d.</b> ProSet "Code Red" firestop Wye fitting* assembled as per manufacturer's instructions. <b>e.</b> ABS, PVC ring required for use with (c) Option 1, fire rated Sch. 80 CPVC insert required for use with (c) Option 2. <b>f.</b> (Optional) ProSet EZ Flex coupling solvent welded to "Code Red" assembly.

\*Component bearing the Warnock Hersey Certification Mark