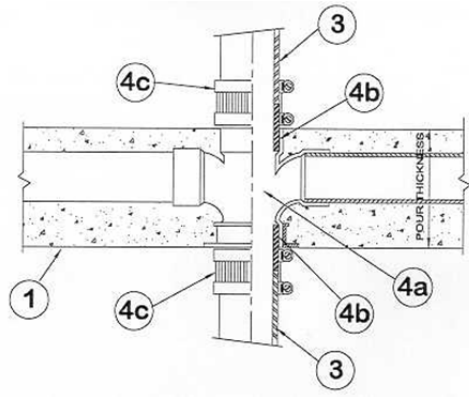


DESIGN NO. PS/PH 180-03
HORIZONTAL (FLOOR) SEE ITEM 1. RATINGS: ASTM-E814 - 3 HRS (F), 2 HRS (T).
TEST PRESSURE DIFFERENTIAL - 2.5 Pa (0.01" OF WATER) MINIMUM



1	Floor: Minimum 7" thick normal density concrete slab.
2	Pipe Support: Support for the riser pipe is provided by connecting the pipe to the firestop device.
3	Pipe Material: Cast iron, maximum diameter 3".
4	Firestop System Component: a) ProSet 3" PVC Tee or Cross & Mounting Flange* cast in place in the concrete equal to the slab thickness. Branches connect only to closed end fixtures. b) ProSet 3" Cast-iron liner pipe insert CP35953. c) ProSet 3" E-Z No-Hub Adapter MJ Coupling S35470.

*Components bearing the Warnock Hersey Certification Mark.