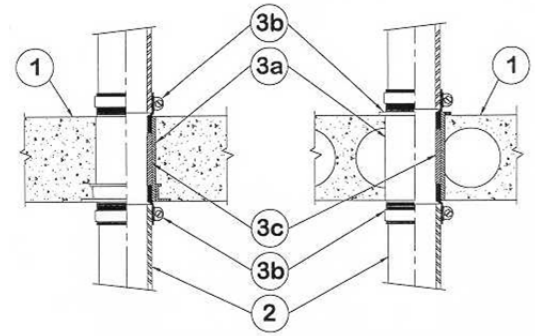


DESIGN NO. PS/PHV 120-01
HORIZONTAL (FLOOR), VERTICAL (WALL). RATINGS: ASTM-E814 - 2 HRS (F), 15 MIN. (T).
TEST PRESSURE DIFFERENTIAL - 2.5 Pa (0.01" OF WATER) MINIMUM



1	Floor: Minimum 4-1/2" thick normal density concrete slab or 7-1/2" thick hollowcore precast concrete floor units. Wall: Minimum 6" thick normal density concrete or any classified concrete block.
2	Pipe Material & Pipe Support: Cast iron, maximum diameter 4". Vertical riser pipe is supported by connecting the pipe to the firestop device.
3	Firestop System Components: a. ProSet PVC Coupling, cast-in-place, cored hole coupling*, length equal to slab thickness. Optional waterproofing caulk may be used under seal ring. b. ProSet EZ Flex PVC coupling* solvent welded into top and bottom of coupling. c. PVC insert, Sch. 40 pipe, solvent welded into coupling.

*Component bearing the Warnock Hersey Certification Mark