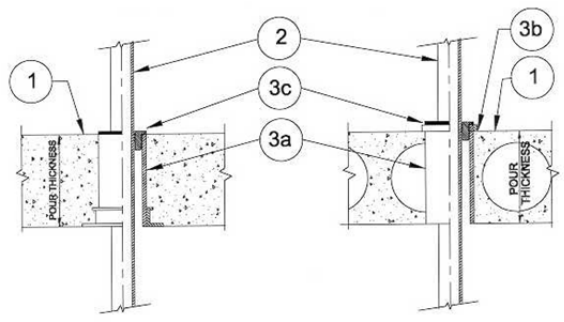


**DESIGN NO. PS/PHV 120-04**  
**HORIZONTAL (FLOOR), VERTICAL (WALL) SEE ITEM 1.**  
**RATINGS: ASTM-E814 - 2 HRS (F), 2 HRS (T)**  
**TEST PRESSURE DIFFERENTIAL - 2.5 Pa (0.01" OF WATER) MINIMUM**



1	<b>Floor:</b> Minimum 4-1/2" thick normal density concrete slab or 7-1/2" thick hollowcore precast concrete floor units. Fluted decks with 2-1/2" concrete slab, rating is 1 hour FT. <b>Wall:</b> Minimum 6" thick normal density concrete slab.
2	<b>Pipe Material &amp; Pipe Support:</b> Vented, Unvented piping, CPVC, PVC Sch. 40 or tubing wall thickness, maximum 1-1/2" diameter. Device can be used for waste pipe. Vertical riser support for pass through pipe is supported by the ProSeal Plug firestop device.
3	<b>Firestop System Components:</b> <b>a.</b> ProSet Series #43 Sleeve Coupling*. <b>b.</b> ProSet Seal Ring for cored hole sleeve and (Optional) ProSet waterproofing caulk PS 35. <b>c.</b> ProSet ProSeal Plug installed at top of sleeve coupling only for floors and on both sides for walls. Important: Foil tape wrap protection must be installed around CPVC or PVC pressure pipe at the point of contact around the ProSeal Plug to prevent any migration.