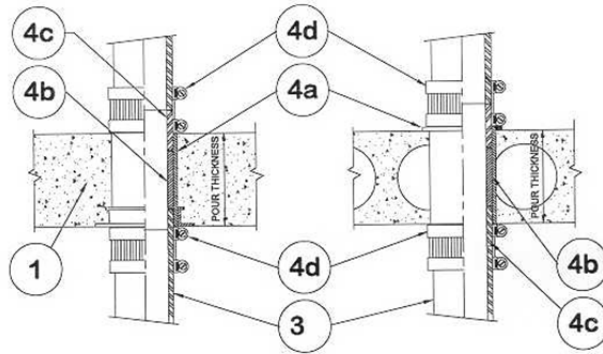


DESIGN NO. PS/PHV 120-06
HORIZONTAL (FLOOR), VERTICAL (WALL) SEE ITEM 1.
RATINGS: ASTM-E814 - 2 HRS (F), 70 MIN. (T)
TEST PRESSURE DIFFERENTIAL - 2.5 Pa (0.01" OF WATER) MINIMUM



1	Floor: Minimum 4-1/2" thick normal density concrete slab or 7-1/2" thick hollowcore precast concrete floor units. Fluted decks with 2-1/2" concrete slab, rating is 1 hour F. Wall: Minimum 6" thick normal density concrete or any classified concrete block.
2	Pipe Support: Vertical riser pipe is supported by connecting the pipe to the firestop device.
3	Pipe Material: Cast iron, maximum diameter 6". See item 4c.
4	Firestop System Component: a) ProSet PVC Coupling*, cast-in-place, or Cored Hole Coupling*, length equal to slab thickness. Optional waterproofing caulk may be used under seal ring. b) PVC Sch. 40 pipe insert. c) ProSet 4" P-90 Hi-Temp PVC fire rated Pipe. 6" size use 6" Sch. 80 CPVC Pipe. d) ProSet Mechanical Joint adapter coupling.

*Components bearing the Warnock Hersey Certification Mark.