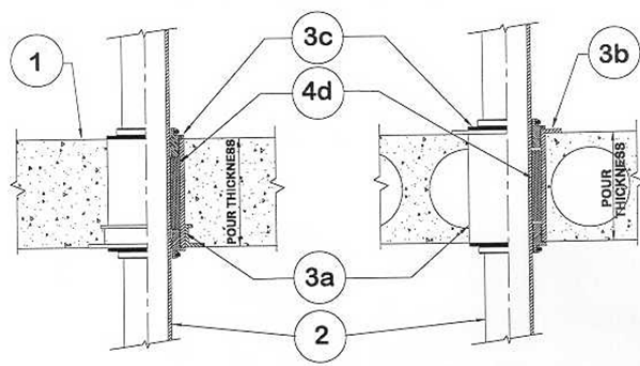


DESIGN NO. PS/PHV 180-02
HORIZONTAL (FLOOR), VERTICAL (WALL) SEE ITEM 1.
RATINGS: ASTM-E814 - 3 & 4 HRS (F), 0 HR. (T), SEE WALL ITEM 1.
TEST PRESSURE DIFFERENTIAL - 2.5 Pa (0.01" OF WATER) MINIMUM



1	Floor: Minimum 4-1/2" thick normal density concrete slab or 7-1/2" thick hollowcore precast concrete floor units. Fluted decks with 2-1/2" concrete slab, rating is 1 hour F. Wall: Minimum 6" thick classified block or normal density concrete. 8" thick required for 4 hour F.
2	Pipe Material & Pipe Support: 6" max. Cast iron, steel, copper. Support for the pass through pipe is provided by ProSet's ProSeal Plug firestop device.
3	Firestop System Components: a. ProSet PVC Coupling*, cast-in-place, cored hole coupling*. b. (Optional) ProSet waterproofing caulk PS 35. c. ProSet "ProSeal Plug"* installed at top & bottom of coupling. d. ProSet "FireFill" ceramic fiber insulation tightly packed around pipe.

*Component bearing the Warnock Hersey Certification Mark