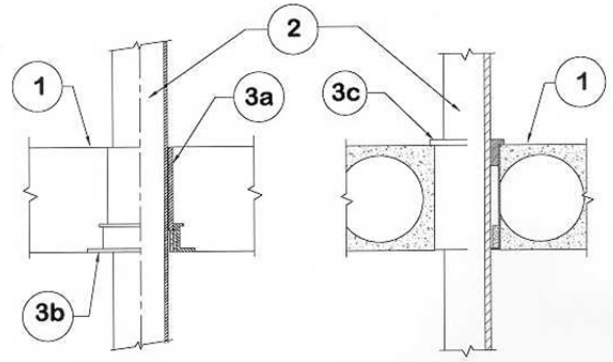


DESIGN NO. PS/PHV 180-03
HORIZONTAL (FLOOR), VERTICAL (WALL). RATINGS: ASTM-E814 - 3 HRS (F), 3 HRS (T)
TEST PRESSURE DIFFERENTIAL - 2.5 Pa (0.01" OF WATER) MINIMUM



1	Floor: Minimum 4-1/2" thick normal density concrete slab or (Floor only) 7-1/2" thick hollow core precast concrete units. Wall: Minimum 6" thick classified block or normal density concrete.
2	Pipe Materials & Pipe Support: Maximum 4" diameter Vented or Unvented ABS, solid or cell-core PVC, or FP RR. Riser pipe can be supported by solvent cementing or by using a ProSet riser Clamp assembly.
3	Firestop System Component: a) ProSet Series #43 Sleeve Coupling*. b) ProSet Series #49 Fastening Flange* with Built-in Intumescent Wrap Strips. Wrap strip flange is installed on the bottom of a floor and on both sides of a wall. Build-in ProSet Self Seal Wrap Strips required: 1 wrap for 2" pipe, 2 wraps for 3" pipe, 3 wraps for 4" pipe. c) ProSet Series #55 Core hole coupling with adjustable 26 gauge metal insert collar with a factory built-in intumescent wrap at the bottom.

*Components bearing the Warnock Hersey Certification Mark.