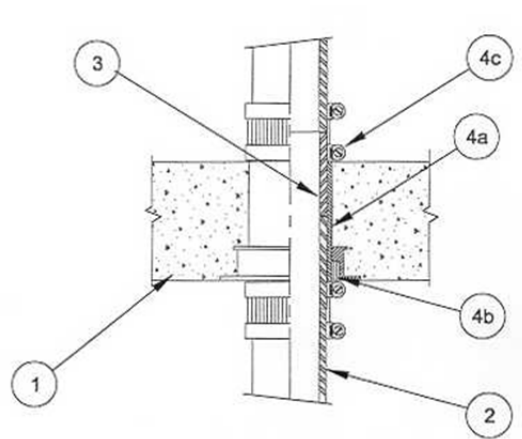


DESIGN NO. PS/PHV 180-04
HORIZONTAL (FLOOR) OR VERTICAL (WALL). RATINGS ASTM-E814 - 3 HRS (F), 2-1/2 HRS (T)
TEST PRESSURE DIFFERENTIAL - 2.5 Pa (0.01" OF WATER) MINIMUM



1	Floor: Minimum 4-1/2" thick normal density concrete slab. Wall: Minimum 6" thick normal density slab.
2	Pipe Materials & Pipe Support: Cast iron, maximum 4" diameter, Vented or Unvented. Vertical riser pipe is supported by connecting the pipe to the firestop device.
3	Pipe Insert: Sch. 40 PVC pipe.
4	Firestop System Component: a) ProSet Series #43 Sleeve Coupling*. b) ProSet Series #49 Fastening Flange* with Built-in Intumescent Wrap Strips. Wrap strip flange is installed on the bottom of a floor and both sides of a wall. Wrap strips required: (1) 1/8" wrap for 2" pipe; (1) 1/4" wrap for 3" pipe; (2) 1/4" wraps for 4" pipe. c) ProSet Mechanical Joint adapter coupling.

*Components bearing the Warnock Hersey Certification Mark.