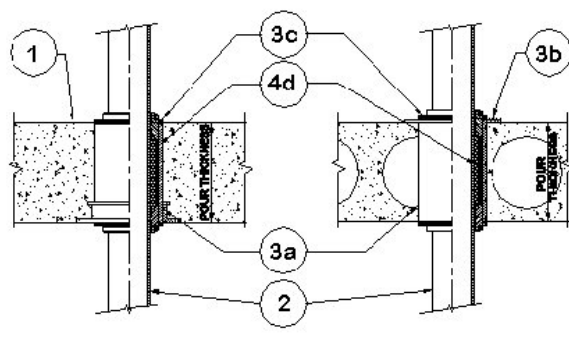


DESIGN NO. PS/PHV 240-01
HORIZONTAL (FLOOR), VERTICAL (WALL) - SEE ITEM 1.
RATINGS: ASTM-E814 - 1, 2, 3, 4 HRS (F), 0 HRS (T). SEE WALL ITEM 1.
TEST PRESSURE DIFFERENTIAL - 2.5 Pa (0.01" OF WATER) MINIMUM



1	Floor: Minimum 4-1/2" thick normal density concrete slab or 7-1/2" thick hollowcore precast concrete floor units. Rating of firestop system will equal rating of floor/ceiling assembly up to 4 hours. Fluted decks with 2-1/2" concrete slab, rating is 1 hour F. Wall: Minimum 6" thick classified block or normal density concrete. 8" thick required for 4 hour F.
2	Pipe Material & Pipe Support: 6" maximum cast iron, steel or copper. Support for the pass through pipe is provided by ProSet's ProSeal Plug firestop device.
3	Firestop System Component: a) ProSet PVC Coupling*, cast-in-place, or cored hole coupling. b) (Optional) ProSet Waterproofing Caulk PS 35. c) ProSet "ProSeal Plug"* installed top and bottom of coupling.
4	Firestop System Component: d) ProSet "FireFill" Ceramic Fiber insulation tightly packing around pipe.

*Component bearing the Warnock Hersey Certification Mark.