

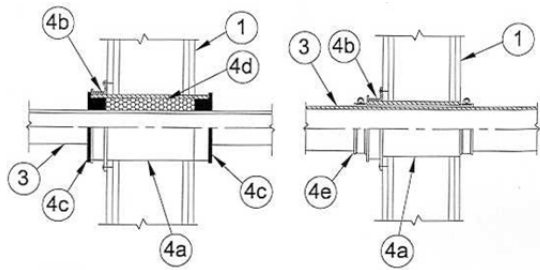
DESIGN NO. PS/PV 120-01
VERTICAL (WALL), RATINGS: SEE TABLE BELOW
TEST PRESSURE DIFFERENTIAL - 2.5 Pa (0.01" OF WATER) MINIMUM

PENETRATION (PIPE)

Material	Size
Steel	1/2" - 6"
Copper	1/2" - 1-1/2"
Sch. 40 CPVC	1/2" - 1-1/2"

MAXIMUM RATINGS

E814	F	T
-	2 HRS	0
-	2 HRS	0
-	2 HRS	2 HRS



1	Wall: Gypsum board/steel stud or wood stud wall, with minimum 2-1/2" cavity width, having a fire resistance rating equivalent to system rating desired.
2	Pipe Support: (not shown) Pipe shall be reliably supported on both sides of wall assembly.
3	Pipe Material: Refer to Table of Ratings.
4	Firestop System Components: a. ProSet PVC Coupling. b. Locating rings solvent welded to 4a. Seal Rings or a Mounting Flange may be used. c. ProSet "ProSeal Plug"* installed on each end of coupling, for 1/2" through 1-1/2" CPVC or metallic pipe. d. ProSet "Fire Fill" ceramic fiber insulation tightly packed around pipe. e. ProSet Riser Clamp, for 2" through 6" metallic pipe only.

*Component bearing the Warnock Hersey Certification Mark