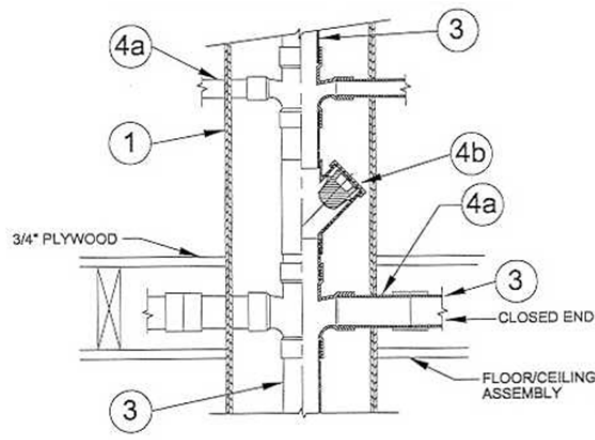


**DESIGN NO. PS/PV 120-03**

**VERTICAL (WALL), RATINGS: ASTM-E814 - 2 HRS (F), 2 HRS (T) SEE ITEM 1.  
TEST PRESSURE DIFFERENTIAL - 2.5 Pa (0.01" OF WATER) MINIMUM**



|   |  |
|---|--|
| 1 | <b>Shaft or Rated Wall:</b> Gypsum board steel stud/wood or masonry wall having a 1 or 2 hour fire rating.   |
| 2 | <b>Pipe Support (not shown):</b> Poke out pipe shall be rigidly supported on both sides of the penetration.  |
| 3 | <b>Pipe Material:</b> Nominal 4" diameter PVC, Sch. 40 or Cellular core pipe with 3" maximum branches.   |
| 4 | <b>Firestop Device:</b><br><b>a.</b> ProSet* P-90 fire rated 1-1/2" through 3" PVC pipe. Gaps from 1/4" to 1/2" can be sealed with regular drywall joint compound.<br><b>b.</b> Maximum size 4"* Code Red Stack is installed on top of the branch poke out pipe cross/tee fitting. Code Red Fitting not required on any risers not penetrating the wall cavity or 1-1/2" size P-90 pipe. |

\*Component bearing the Warnock Hersey Certification Mark