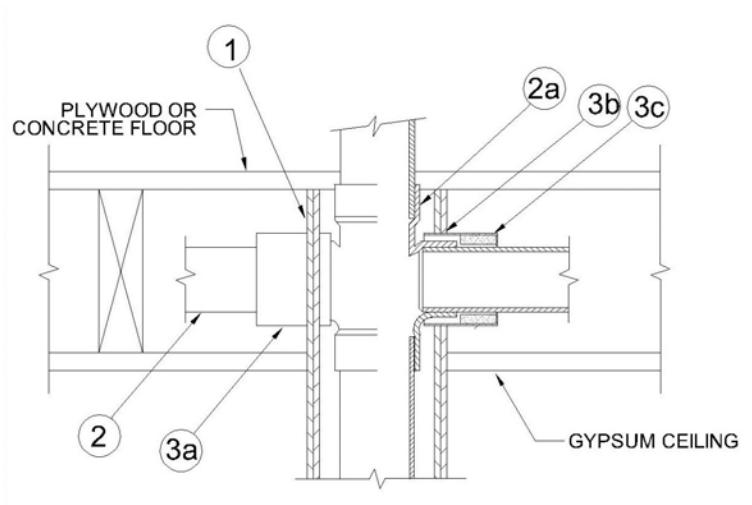


**DESIGN NO. PS/PV 120-06**  
**VERTICAL (WALL); RATINGS: ASTM-E814 - 2 HOURS (F), 2 HOURS (T)**  
**TEST PRESSURE DIFFERENTIAL - 2.5 Pa (0.01" OF WATER) MINIMUM**



1	<b>Wall:</b> Gypsum board/steel or wood stud wall, with minimum 4-1/2" cavity width, having a fire resistance rating of either 1 or 2 hours.
2	<b>Pipe Materials &amp; Support:</b> Maximum 3" diameter Vented - Solid or Cell-Core ABS or PVC Pipe. a) Maximum 3" diameter ABS or PVC Hub Fittings Pipe shall be reliably supported on both sides of the wall.
3	<b>Hub Seal Poke-Out Firestop Device:</b> a) ProSet 26 gauge Metal Sleeve*. b) PVC Support Ring secures Metal Sleeve and plastic pass-through pipe using 3 - #6 set screws. c) 3/8" thick x 1-1/2" wide intumescent Wrap Strip secured in end of ProSet 26 gauge metal sleeve.

\*Components bearing the Warnock Hersey Certification Mark.