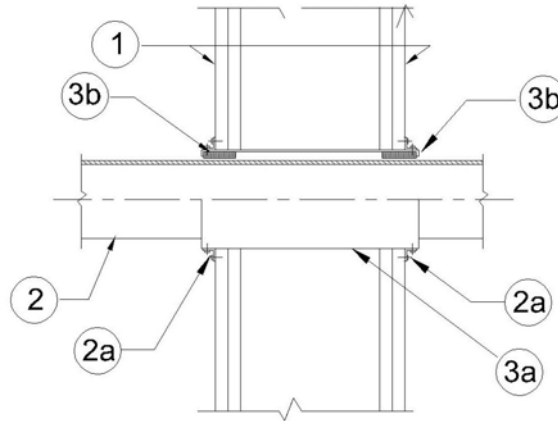


**DESIGN NO. PS/PV 120-07**  
**VERTICAL (WALL); RATINGS: ASTM-E814 - 2 HOURS (F), 2 HOURS (T)**  
**TEST PRESSURE DIFFERENTIAL - 2.5 Pa (0.01" OF WATER) MINIMUM**



1	<b>Wall:</b> Gypsum board/steel or wood stud wall, with minimum 2-1/2" cavity width, having a fire resistance rating of 1 or 2 hours.
2	<b>Pipe Materials &amp; Support:</b> Maximum 4" diameter Vented or Unvented ABS, solid or cell-core PVC or FRPP. <b>a)</b> Two right angle metal clamps are attached to the metal sleeve on each side with #6 sheet metal screws and to the gypsum wall with #6 sheet metal screws into two plastic inserted drywall anchors.
3	<b>Self Seal 26 Gauge Metal Wall Sleeve Firestop Device*:</b> <b>a)</b> ProSet 26 gauge Metal Sleeve* with a intumescent wrap strip inside both ends of the 8' long sleeve. The 2" sleeve is sized for a 3" diameter hole, the 3" for a 4-1/2" and the 4" for a 6" hole. <b>b)</b> The 2" sleeve has a 1/4" thick by 1-1/2" wide wrap strip, the 3" has a 3/8" x 1-1/2" wide strap strip and the 4" has a 5/8" thick by 1-1/2" wrap strip.

\*Components bearing the Warnock Hersey Certification Mark.