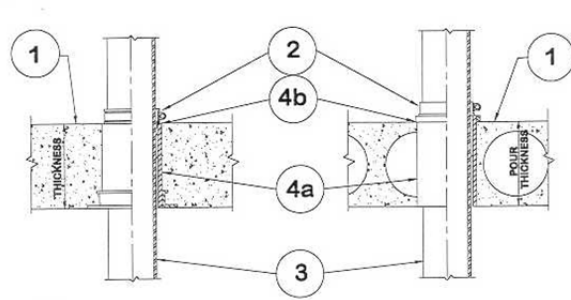


DESIGN NO. PS/PHV 180-01
HORIZONTAL (FLOOR), VERTICAL (WALL) SEE ITEM 1.
RATINGS: ASTM-E814 - 3 HRS (F), 30 MIN. (T).
TEST PRESSURE DIFFERENTIAL - 10 Pa (0.05" OF WATER)



1	Floor: Minimum 4-1/2" thick normal density concrete slab or 7-1/2" thick hollow core precast concrete floor units. Fluted decks with 2-1/2" concrete slab, rating is 1 hour F. Wall: Minimum 6" thick normal density concrete slab.
2	Pipe Support: ProSet riser clamp. A ProSet riser Clap is required on both sides of wall penetration.
3	Pipe Material: Maximum diameter 6" cast iron, steel, copper, glass pipe.
4	Firestop System Components: a. ProSet PVC Coupling*, cast-in-place, cored hole coupling*, length equal to slab thickness. b. (Optional) ProSet waterproofing caulk PS 35.

*Component bearing the Warnock Hersey Certification Mark