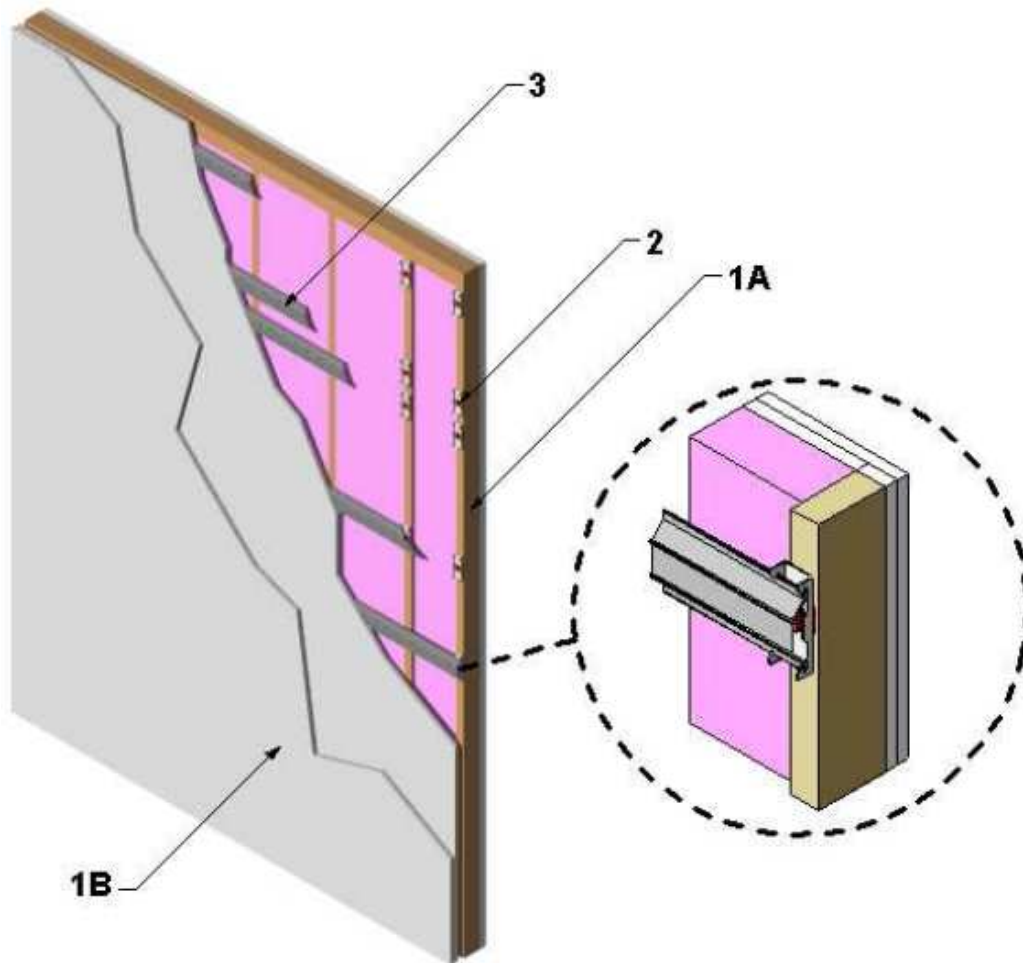

Design Number SBS/MSV 120-01
NON-LOADBEARING WALL
Studco Building Systems
Resilmount A237R Wall and Ceiling Clip and A237 Wall and Ceiling Clip
ASTM E 119
Assembly Rating – 2 Hours



1. WALL ASSEMBLY: Construct 2- hour rated gypsum wall assembly using the following elements:

- A. WOOD STUDS: Install nominal 2- inch X 4-inch Douglas fir wood studs spaced maximum 16-inches on center. Attach each wood stud to top and bottom wood plates (not

shown) using two (2) 3-inch x 0.120- inch smooth shank nails. Construct top plate of 2 wood studs installed horizontally at the top of the gypsum wall assembly and the bottom plate of a single wood stud.

- B. GYPSUM BOARD: Install two layers of 5/8-inch Type X gypsum board

13 30 00 SPECIAL STRUCTURES

13 48 00 Sound, Vibration, and Seismic Control

13 48 13 Manufactured Sound and Vibration Control Components

Page 2 of 2

oriented vertically. Install face layer (gypsum board) over base layer (gypsum board) with minimum 12-inch overlaps at vertical joints. After gypsum board is attached as described below, apply vinyl or casein, dry or premixed joint compound to face layers of gypsum board in two coats to all exposed screw heads and gypsum board butt joints. Embed a minimum 2-inch wide paper, plastic, or fiberglass tape in first layer of compound over butt joints of the gypsum board. Install gypsum board with the following specifications:

- i. Wall and Ceiling Clip Side – Install base layer using Number 6 X 1-1/4-inch self tapping zinc coated drywall screws fastened to the furring channel (Item 3) spaced 8-inches on center. Install face layer using Number 6 X 1-7/8-inch self tapping zinc coated drywall screws spaced 8-inches on center. Install screws at all butt joints 1-1/2-inch from the edge of the gypsum wallboard.
- ii. Opposite Side – Install base layer using 1-1/4-inch coarse thread drywall screws spaced 8-inches on center in the perimeter and field. Install face layer using minimum 2-inch coarse thread drywall screws

spaced 8-inches on center in the perimeter and the field. Position screws at all butt joints 1-1/2-inch from the edge of the gypsum board.

2. CERTIFIED COMPANY: Studco Building Systems

CERTIFIED PRODUCT: Sound and Vibration Control Equipment

MODEL: Resilmount A237R Wall and Ceiling Clip or A237 Wall and Ceiling Clip

Install clips* with a maximum horizontal spacing of 48-inches on center and a maximum vertical spacing of 24-inches on center. Secure clip into wood stud (Item 1A) using 2-inch coarse thread drywall screw through a 1-inch steel washer with 1/4-inch center hole. At all horizontal butt joints of the gypsum board (Item 1B), install clips a minimum 3-inches above the butt joint and 3-inches below the butt joint.

*** Clips are to be installed on only one side of the gypsum wall assembly.**

3. FURRING: Install 2-1/2-inch wide X 1-inch deep (1/2-inch leg) "hat shaped" channel perpendicular to wood studs (Item 1A). Secure channel to Resilmount A237R Wall and Ceiling Clip or A237 Wall and Ceiling Clip (Item 2).