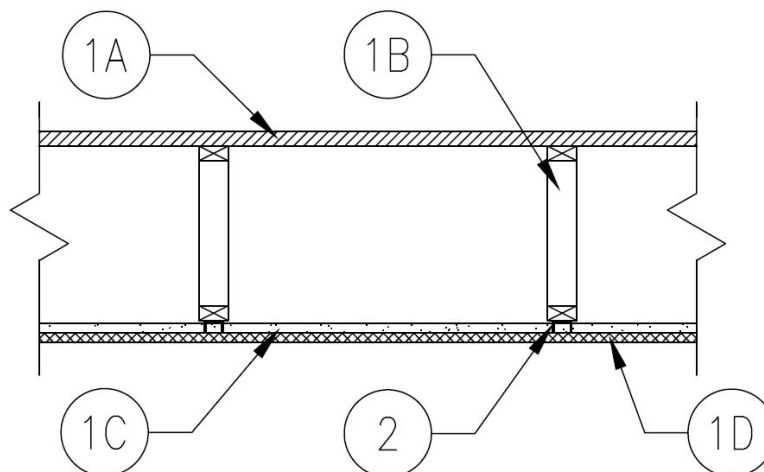

Studco Building Systems
Design No. SBS/MSVCC 60-03
Floor/Ceiling Assembly
Resilmount A237R Wall and Ceiling Clip or A237 Wall and Ceiling Clip
ASTM E119-15
Rating: 1 Hour



- 1. FLOOR/CEILING ASSEMBLY:** Use a 1 hour fire-rated floor/ceiling constructed in accordance with material and construction specifications of UL Design No. L528 and with min. requirements as specified below:

Floor/Ceiling Assemblies: refer to the designs for additional details and options – Design Nos. L528:

- A. **FLOORING SYSTEM** – Use min. 23/32 in. thick tongue and groove wood structural panels.
- B. **WOOD TRUSSES** – Use parallel chord wood trusses, spaced max. 24 in. on center (oc), manufactured from nominal 2 x 4 lumber, and min. truss depth of 12 in.
- C. **CHANNELS** – Use min. 25 GA galvanized steel furring channels spaced a max. of 24 in. oc or min. 26 MSG galvanized steel resilient channels spaced a max. of 16 in. oc. Secure channels to bottom chord of wood trusses (Item 1B) using approved fasteners and methods.

- D. **GYPSUM BOARD** – Min. one layer of approved 5/8 in. thick gypsum board (see UL Designs) attached to channels (Item 1C) and with long dimension perpendicular to channels using approved fasteners and methods.

- E. **LOAD RESTRICTIONS** – Apply any load restrictions as noted in the referenced design listing.

- 2. CERTIFIED MANUFACTURER:** Studco Building Systems

CERTIFIED PRODUCT: Ceiling Clip

CERTIFIED MODEL: Resilmount A237R Wall and Ceiling Clip or A237 Wall and Ceiling Clip

Install Resilmount A237R Wall and Ceiling Clip or A237 Wall and Ceiling Clip perpendicular to the channel max. 24 in. oc and 48 in. oc on the parallel channels. Secure to trusses using No. 10 x 2-1/2 in. coarse drywall self-drilling screws.