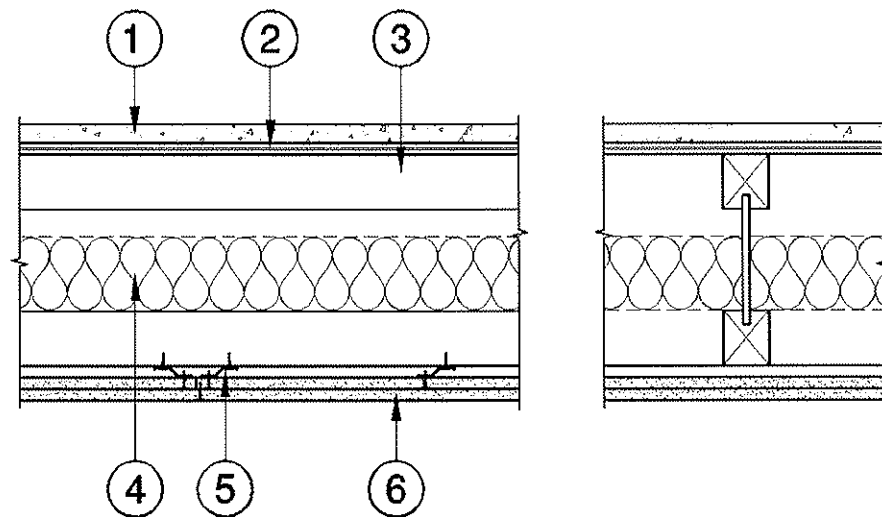


DESIGN NO. NORDIC/FCA 60-02  
ASSEMBLY RATING: 60 MINUTES  
FLOOR/CEILING ASSEMBLY



- |    |  |
|----|--|
| 1. | <b>Topping (Optional):</b> Lightweight concrete or proprietary topping.  |
| 2. | <b>Sub-Flooring:</b> Minimum 5/8 in. plywood or oriented strandboard (OSB) when topping is used, otherwise 3/4 in. thickness is required. Plywood installed perpendicular to joists, with end joints staggered, fastened in accordance with Code requirements.   |
| 3. | <b>Structural Members:</b> Nordic I-joist, Minimum joist depth 9-1/4 in., minimum flange dimension 1-1/2 in. by 2-1/2 in., installed at 24 in. on centers maximum.   |
| 4. | <b>Insulation (Optional):</b> 3-1/2 in. fiberglass batt insulation, friction fit between flanges or webs.  |
| 5. | <b>Resilient Channels:</b> Nominal 24 gauge galvanized steel channels installed perpendicular to joists and spaced 16 in. on centers maximum. Additional channels required at gypsum wallboard end joints such that each board end rests on its own channel. These additional channels shall extend to the next joist on each side of the board edges. Channels fastened with 1-5/8 in. long Type W screws at each joist intersection.   |
| 6. | <b>Gypsum Board:</b> Two layers of 1/2 in. Type X gypsum wallboard. Base layer to be installed with long dimensions perpendicular to supports with end joints butted over supports and staggered 24 in. minimum. 1-1/8 in. Type S screws are spaced 12 in. on centers at the joints and in the field. Face layer installed with long dimension perpendicular to supports and edges, staggered 24 in. from base layer end joints. 1-5/8 in. Type S screws are placed minimum 12 in. on centers on intermediate supports, 1-1/2 in. Type W screws 8 in. on centers at butt joints. |