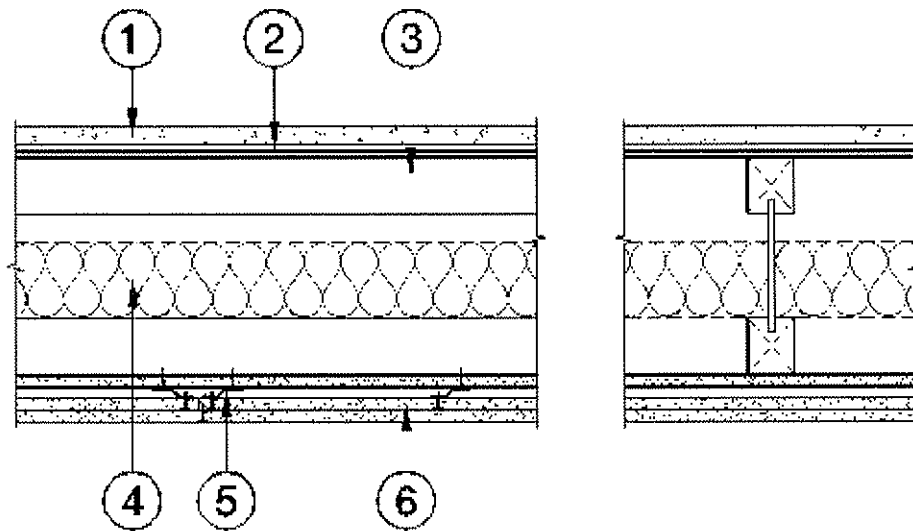


DESIGN NO. NORDIC/FCA 120-01
ASSEMBLY RATING: 120 MINUTES
FLOOR/CEILING ASSEMBLY



1. **Topping (Optional):** Lightweight concrete or proprietary topping.
2. **Sub-Flooring:** Minimum 5/8 in. plywood or oriented strandboard (OSB) when topping is used, otherwise 23/32 in. thickness is required. Plywood installed perpendicular to joists, with end joints staggered, fastened in accordance with Code requirements.
3. **Structural Members:** Nordic I-joist, Minimum joist depth 9-1/4 in., minimum flange dimension 1-1/8 in. by 2 in., installed at 24 in. on centers maximum.
4. **Insulation (Optional):** max. 6 in. fiberglass or rockwool batt insulation, friction fit between flanges or webs, and supported using wires every 16 in..
5. **Resilient Channels:** Nominal 25 gauge galvanized steel resilient channels installed perpendicular to joists and spaced 16 in. on centers maximum. Additional channels required at gypsum wallboard end joints such that each board end rests on its own channel. These additional channels shall extend to the next joist on each side of the board edges. Channels fastened with two 1-5/8 in. long Type S screws at each joist intersection.
6. **Gypsum Board:** Three layers of 5/8 in. Type C gypsum wallboard. Base layer applied directly to joists, installed with long dimensions perpendicular to joists with end joints butted over joists and staggered 24 in. minimum. Base layer fastened with 1-5/8 in. Type S screws, spaced 12 in. on centers at the joints and in the field. Middle and Face layer installed over channels with long dimension perpendicular to resilient channels and edges, staggered 24 in. from base layer end joints. Middle layer fastened with 1" Type S screws located 12 in. on centers at the joints and in the field. Face layer fastened with 1-7/8 in. Type S screws are placed 8 in. on centers at joints and in the field. (Screw lengths are minimums).