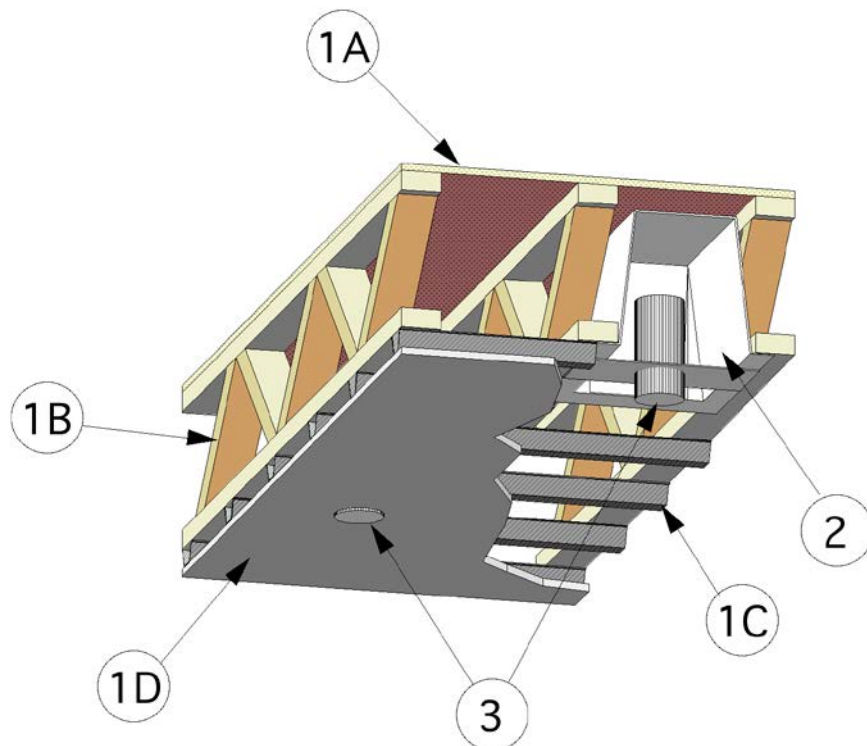

Design Number FRPS/FME 60-02
NON LOAD BEARING FLOOR / CEILING
Fire Rated Product Specialties Corp
FRPS Fire Rated Enclosures:
FN-Z-12-20-9 and FN-Z-12-20-9-SEA FIRE RATED ENCLOSURES
FN-Z-12-20-9-EXH, FIRE RATED ENCLOSURE
FN-Z-14-14-3, FIRE RATED ENCLOSURE
ASTM E 119 & CAN/ULC S101
Fire Resistance Rating: 1 Hour



1. FLOOR CEILING ASSEMBLY:
Constructed in the manner as specified below:

- A. Plywood subfloor: Nominal 23/32 in. thick interior grade plywood with tongue-and-groove edges along the 8 foot sides. Long dimension of panels, or face grain of plywood, to be perpendicular to trusses with joints staggered. Plywood is secured to top side of truss assembly (Item 1B) with No. 6d

common nails spaced maximum 12 in. on center (oc).

- B. Trusses: Parallel chord trusses spaced a maximum of 24 in. oc fabricated of nominal 2 in. x 4 in. lumber with lumber oriented vertically or horizontally. Truss members are secured with No. 20 MSG galvanized steel truss plates.
- C. Resilient Channels: Formed from nominal 26 GA galvanized steel, spaced 16 in. oc and applied

- perpendicular to the trusses. Channel is secured to the trusses with 1-1/4 in. long steel wood screws. Channel overlapped at splices a minimum of 4 in. Channel is removed in locations where the recessed light cover (Item 2) is located.
- D. Gypsum Wallboard: Nominal 5/8 in. Type X gypsum wallboard is secured to the underside of the resilient channel (Item 1C) with 1 in. long wallboard screws spaced max 12 in. oc and located 1-1/2 in. from side and end joints. Apply vinyl or casein, dry or premixed joint compound to face layers of gypsum wallboard in two coats to all exposed fastener heads and gypsum wallboard joints. A minimum 2 in. wide paper, plastic, or fiberglass tape is embedded in first layer of compound over joints in gypsum wallboard.
2. **CERTIFIED MANUFACTURER:** Fire Rated Product Specialties Corp
- CERTIFIED PRODUCT:** Formed Metal Fabrications
- MODEL:** FRPS Fire Rated Enclosures: FN-Z-12-20-9, FN-Z-12-20-9-SEA, FN-Z-12-20-9-EXH, and FN-Z-14-14-3
- RECESSED LIGHT COVER:** Constructed of nominal 22 GA galvanized steel and having nominal dimensions 20 in. long x 12 in. wide x 9-1/2 in. deep and having nominal 2-1/2 in. wide flanges. Position the box inverted and recessed into the floor cavity. Secure the flanges of the box to the underside of the truss assembly (Item 1B) with No. 6, 1-1/4 in. long bugle head screws spaced at pre-drilled locations on the flanges. The boxes may be installed in the floor with the following provisions:
- Minimum oc fixture spacing of 24 in. within same truss cavity.
 - Minimum center-to-center fixture spacing of 34 in. for adjacent truss cavities.
3. **RECESSED LIGHT FIXTURE:** Standard canister-style recessed light assembly installed in accordance with manufacturer's instructions. Standard 3C-12AWG "Romex" wire is fixed to the assembly and exits the recessed light cover (Item 2) through a maximum of two openings.
4. **FIRESTOP SEAL:** (Not shown) Apply a bead of firestop fill void or cavity material** around the power supply wire where it exits the recessed light cover (Item 2).(**Listed with Intertek).