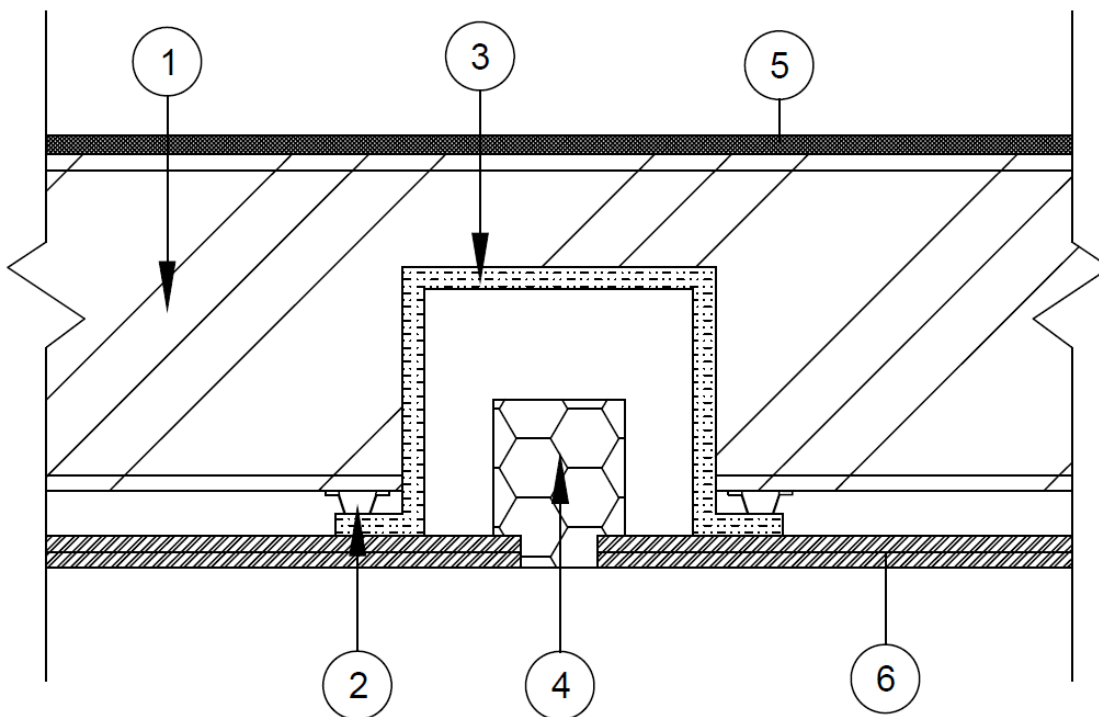

Fire Rated Product Specialties Corp
Design No. FRPS/FME 60-08
FRPS Fire Rated Enclosures:
FN-Z-12-20-9 FIRE RATED ENCLOSURES
FN-Z-12-20-6.625 FIRE RATED ENCLOSURES
FN-Z-15-16-9 FIRE RATED ENCLOSURES
ASTM E119 & CAN/ULC S101
Fire Resistance Rating: 1 Hour



1. **JOISTS:** Install Truss Joist TJI / Pro 150 Joists spaced 24 in. on center (oc).
2. **HAT CHANNELS:** Formed from nominal 25 GA galvanized steel, spaced 16 in. oc and applied perpendicular to the trusses. Channel is secured to the trusses with 1-1/4 in. long drywall screws.
3. **CERTIFIED MANUFACTURER:** Fire Rated Product Specialties Corp

CERTIFIED PRODUCT: Formed Metal Enclosure

CERTIFIED MODELS: FN-Z-12-20-9, FN-Z-12-20-6.625, FN-Z-15-16-9

RECESSED LIGHT COVER:

Constructed from nominal 22 GA galvanized steel. Position the box inverted and recessed into the floor cavity. Secure the flanges of the box to the underside of the hat channels with 7/16 in. long pan framing screws (two in each flange). The boxes may be installed in the floor with the following provisions:

Max. two fixtures within 36 sq. ft. area.
Min. oc fixture spacing of 24 in. within same truss cavity. Min. center-to-center fixture spacing of 34 in. for adjacent truss cavities.

4. **RECESSED LIGHT FIXTURE:** Install HALO Model H7T recessed light fixture inside the metal enclosure according to manufacturer's instructions.
5. **PLYWOOD SUBFLOOR:** Nominal 3/4 in. thick interior grade plywood with tongue-and-groove edges along the sides. Long dimension of panels, or face grain of plywood, to be perpendicular to trusses with joints staggered. Plywood is secured to top side of truss assembly (Item 1) with 2-1/2 in. long deck screws spaced 8 in. oc.
6. **GYPSUM:** Install two layers of 5/8 in. thick Type X gypsum board to the underside of the hat channel (Item 2).

Install base layer with long end perpendicular to the hat channel. Attach the base layer to the hat channel using 1-1/4 in. long drywall screws spaced 12 in. oc. Attach the face layer to the hat channel using 1-7/8 in. long drywall screws spaced 12 in. oc, offset 6 in. from the screws on the base layer. Cover the face layer joints with paper tape and joint compound, and cover the exposed screw heads with joint compound.

7. **BONNET (Optional, Not Shown):** Cover formed metal enclosure (Item 3) with 3M Fire Barrier Plenum Wrap 5A Bonnet.